

PRODUCT INFORMATION

Clone ID	DMC368
Target	GPR75
Synonyms	Probable G-protein coupled receptor 75
Host Species	Rabbit
Description	PE-conjugated Anti-GPR75 antibody(DMC368); IgG1 Chimeric mAb
Delivery	3-4 weeks
Uniprot ID	O95800
IgG type	Rabbit/Human Fc chimeric IgG1
Clonality	Monoclonal
Reactivity	Human
Applications	Flow Cyt
Recommended Dilutions	Flow Cyt 1:100
Purification	Purified from cell culture supernatant by affinity chromatography
Formulation & Reconstitution	Liquid□PBS with 0.05% Proclin300, 1% BSA
Storage & Shipping	Store at 2°C-8°C for 6 months
Background	GPR75 is a member of the G protein-coupled receptor family. GPRs are cell surface receptors that activate guanine-nucleotide binding proteins upon the binding of a ligand.
Usage	Research use only
Conjugate	PE-conjugated



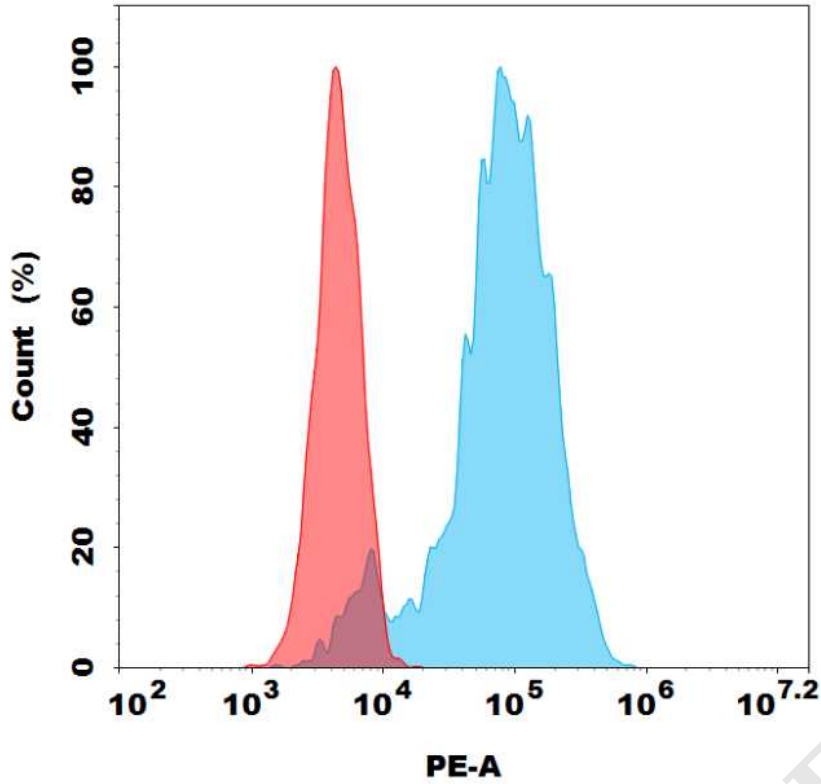


Figure 1. Flow cytometry analysis with 0.5 μ l/test PE Anti-GPR75 antibody(DMC368) on CHO-GPR75 stable expression cell line (Blue histogram) or CHO (Red histogram).

DIMABIO CONFIDENTIAL

