

**PRODUCT INFORMATION**

<b>Target</b>	SEZ6
<b>Synonyms</b>	BSRPC
<b>Description</b>	Recombinant mouse SEZ6 protein with C-terminal 6×His tag
<b>Delivery</b>	In Stock
<b>Uniprot ID</b>	Q7TSK2
<b>Expression Host</b>	HEK293
<b>Tag</b>	C-6×His Tag
<b>Molecular Characterization</b>	Mouse SEZ6(Leu20-His922) 6×His tag
<b>Molecular Weight</b>	The protein has a predicted molecular mass of 98.7 kDa after removal of the signal peptide. The apparent molecular mass of mSEZ6-His is approximately 130-250 kDa due to glycosylation.
<b>Purity</b>	The purity of the protein is greater than 85% as determined by SDS-PAGE and Coomassie blue staining.
<b>Formulation &amp; Reconstitution</b>	Lyophilized from sterile PBS, pH 7.4. Normally 5 % - 8% trehalose is added as protectants before lyophilization. Please see Certificate of Analysis for specific instructions of reconstitution.
<b>Storage &amp; Shipping</b>	Store at -20°C to -80°C for 12 months in lyophilized form. After reconstitution, if not intended for use within a month, aliquot and store at -80°C (Avoid repeated freezing and thawing). Lyophilized proteins are shipped at ambient temperature.
<b>Background</b>	Acts upstream of or within several processes, including excitatory postsynaptic potential; nervous system development; and regulation of dendrite development. Located in several cellular components, including dendrite; neuronal cell body; and perinuclear region of cytoplasm. Is expressed in several structures, including central nervous system; genitourinary system; liver; retina; and thymus. Orthologous to human SEZ6 (seizure related 6 homolog). [provided by Alliance of Genome Resources, Apr 2022]
<b>Usage</b>	Research use only
<b>Conjugate</b>	Unconjugated



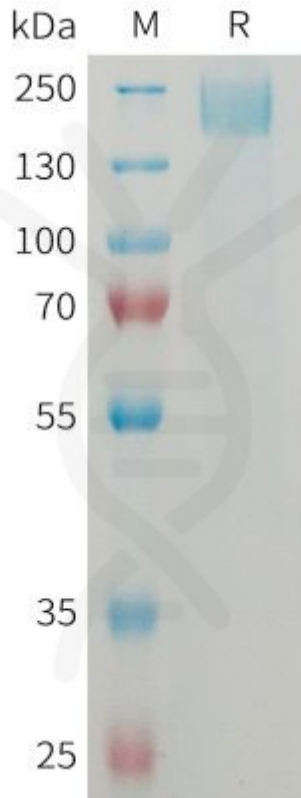


Figure 1. Mouse SEZ6 Protein, His Tag on SDS-PAGE under reducing condition.

DIMABIO CONFIDENTIAL

