

**PRODUCT INFORMATION**

<b>Target</b>	Mesothelin
<b>Synonyms</b>	Mesothelin;Pre-pro-megakaryocyte-potentiating factor
<b>Description</b>	Recombinant mouse Mesothelin protein with C-terminal 6×His tag
<b>Delivery</b>	In Stock
<b>Uniprot ID</b>	Q61468
<b>Expression Host</b>	HEK293
<b>Tag</b>	C-6×His Tag
<b>Molecular Characterization</b>	Mouse Mesothelin(Asp298-Ser600) 6×His tag
<b>Molecular Weight</b>	The protein has a predicted molecular mass of 35.0 kDa after removal of the signal peptide. The apparent molecular mass of mMesothelin-His is approximately 35-40 kDa due to glycosylation.
<b>Purity</b>	The purity of the protein is greater than 85% as determined by SDS-PAGE and Coomassie blue staining.
<b>Formulation &amp; Reconstitution</b>	Lyophilized from sterile PBS, pH 7.4. Normally 5 % - 8% trehalose is added as protectants before lyophilization. Please see Certificate of Analysis for specific instructions of reconstitution.
<b>Storage &amp; Shipping</b>	Store at -20°C to -80°C for 12 months in lyophilized form. After reconstitution, if not intended for use within a month, aliquot and store at -80°C (Avoid repeated freezing and thawing). Lyophilized proteins are shipped at ambient temperature.
<b>Background</b>	This gene encodes a preproprotein that is proteolytically processed to generate two protein products, megakaryocyte potentiating factor and mesothelin. Megakaryocyte potentiating factor functions as a cytokine that can stimulate colony formation of bone marrow megakaryocytes. Mesothelin is a glycosylphosphatidylinositol-anchored cell-surface protein that may function as a cell adhesion protein. This protein is overexpressed in epithelial mesotheliomas, ovarian cancers and in specific squamous cell carcinomas. Alternative splicing results in multiple transcript variants, at least one of which encodes an isoform that is proteolytically processed. [provided by RefSeq, Feb 2016]
<b>Usage</b>	Research use only
<b>Conjugate</b>	Unconjugated



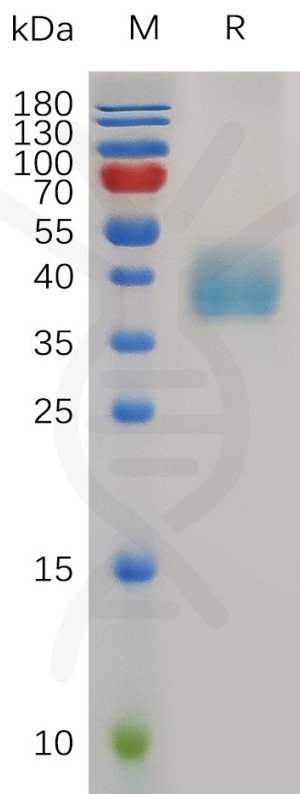


Figure 1. Mouse Mesothelin Protein, His Tag on SDS-PAGE under reducing condition.

DIMABIO CONFIDENTIAL

