

PRODUCT INFORMATION

| | |
|---|--|
| Target | EPHA2 |
| Synonyms | Eck;Myk2;Sek2;Sek-2 |
| Description | Recombinant mouse EPHA2 protein with C-terminal 6×His tag |
| Delivery | In Stock |
| Uniprot ID | Q03145 |
| Expression Host | HEK293 |
| Tag | C-6×His Tag |
| Molecular Characterization | Mouse EPHA2(Lys26-Asn535) 6×His tag |
| Molecular Weight | The protein has a predicted molecular mass of 57.4 kDa after removal of the signal peptide. The apparent molecular mass of mEPA2-His is approximately 55-70 kDa due to glycosylation. |
| Purity | The purity of the protein is greater than 85% as determined by SDS-PAGE and Coomassie blue staining. |
| Formulation & Reconstitution | Lyophilized from sterile PBS, pH 7.4. Normally 5 % - 8% trehalose is added as protectants before lyophilization. Please see Certificate of Analysis for specific instructions of reconstitution. |
| Storage & Shipping | Store at -20°C to -80°C for 12 months in lyophilized form. After reconstitution, if not intended for use within a month, aliquot and store at -80°C (Avoid repeated freezing and thawing). Lyophilized proteins are shipped at ambient temperature. |
| Background | Predicted to enable growth factor binding activity and transmembrane-ephrin receptor activity. Involved in several processes, including animal organ development; osteoblast differentiation; and regulation of blood vessel endothelial cell migration. Acts upstream of or within several processes, including blood vessel morphogenesis; nervous system development; and notochord development. Located in cell surface. Is expressed in several structures, including alimentary system; branchial arch; central nervous system; endometrium; and limb. Used to study cataract 6 multiple types. Human ortholog(s) of this gene implicated in cataract 6 multiple types. Orthologous to human EPHA2 (EPH receptor A2). [provided by Alliance of Genome Resources, Apr 2022] |
| Usage | Research use only |
| Conjugate | Unconjugated |



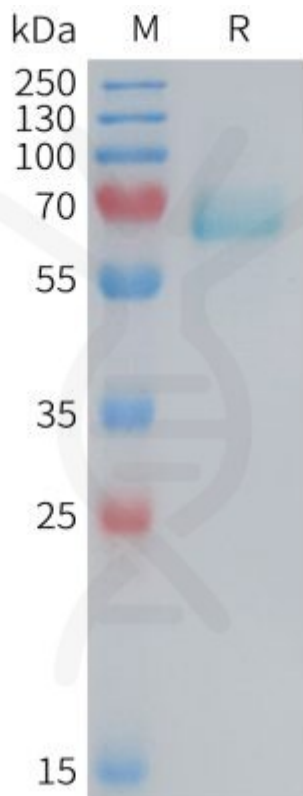


Figure 1. Mouse EPHA2 Protein, His Tag on SDS-PAGE under reducing condition.

DIMABIO CONFIDENTIAL

