

## PRODUCT INFORMATION

<b>Target</b>	CD63, CSF1R
<b>Description</b>	The embedded and sliced tumor sections (4µm section) from M-NSG mice implanted with SK-BR-3 cells
<b>Host Cells</b>	SK-BR-3
<b>Applications</b>	IHC
<b>Host mice</b>	M-NSG
<b>Delivery</b>	1 week
<b>Guarantee</b>	36 months from the date of manufacture
<b>Background</b>	These carefully prepared tissue slides offer researchers standardized and high-quality samples for antibody testing. Utilizing tumor models derived from immunocompromised mice, researchers can confidently assess antibody specificity and sensitivity, driving advancements in cancer diagnostics and therapeutics.
<b>Storage &amp; Shipping</b>	Room temperature
<b>Usage</b>	Research use only

**SLI100022**

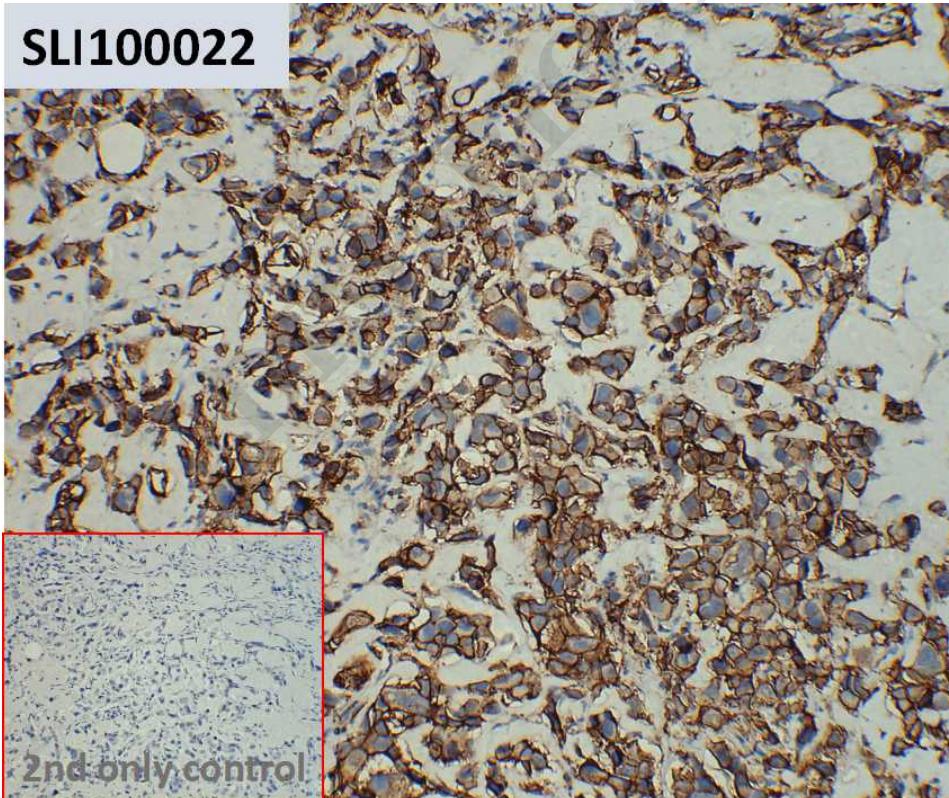


Figure 1. IHC analysis of M-NSG SK-BR-3 DiSliceX™ SlideSet section (Cat. No. SLI100022) with anti-TROP2 antibody at a concentration of 10 µg/ml. The inset image shows the absence of staining in secondary antibody-only control.



DIMABIO CONFIDENTIAL

