

## PRODUCT INFORMATION

<b>Target</b>	B7H2, B7H6, BAFF-R, CD10, CD19, CD205, CD21, CD22, CD23, CD27, CD40, CD48, CD70, CD74, CD79B, CXCR5, ICAM-1, NTB-A, PVRIG
<b>Description</b>	The embedded and sliced tumor sections (4µm section) from M-NSG mice implanted with RAJI cells
<b>Host Cells</b>	RAJI
<b>Applications</b>	IHC
<b>Host mice</b>	M-NSG
<b>Delivery</b>	1 week
<b>Guarantee</b>	36 months from the date of manufacture
<b>Background</b>	These carefully prepared tissue slides offer researchers standardized and high-quality samples for antibody testing. Utilizing tumor models derived from immunocompromised mice, researchers can confidently assess antibody specificity and sensitivity, driving advancements in cancer diagnostics and therapeutics.
<b>Storage &amp; Shipping</b>	Room temperature
<b>Usage</b>	Research use only

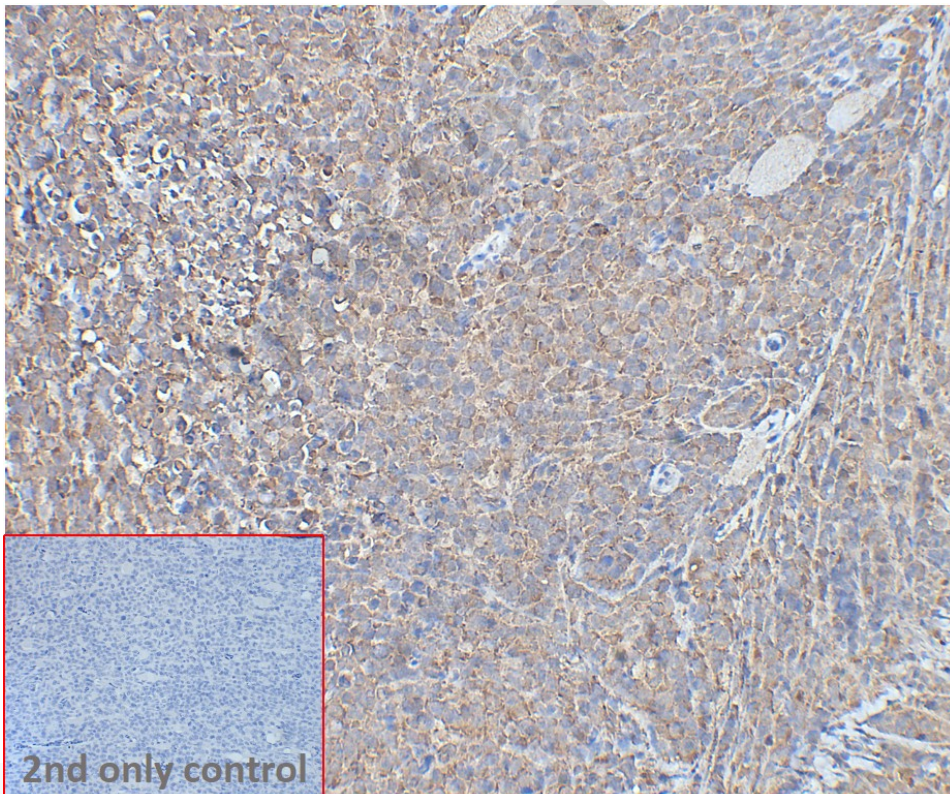


Figure 1. IHC analysis of M-NSG RAJI DiSliceX™ SlideSet section (Cat. No. SLI100013) with Anti-BAFF-R Antibody (DME143) Rabbit mAb (Cat. No. DME10014) at a concentration of 10 µg/ml. The inset image shows the 2nd only control.

Address: (DIME) Institute of  
 Biotechnology B7, Biolake No.666  
 Gaoxin Road, Wuhan, Hubei, China  
 Telephone: +1 2409940618(USA)  
 /+86-18062749453(China)  
 /+86-400-006-0995(China)

Email: [info@dimabio.com](mailto:info@dimabio.com)  
 Website: [www.dimabio.com](http://www.dimabio.com)



staining in secondary antibody-only control.

DIMABIO CONFIDENTIAL

