

PRODUCT INFORMATION

Target	TSLP
Synonyms	TSLP
Description	Recombinant human TSLP protein with C-terminal human Fc tag
Delivery	In Stock
Uniprot ID	Q969D9
Expression Host	HEK293
Tag	C-Human Fc Tag
Molecular Characterization	TSLP(Tyr29-Gln159) hFc(Glu99-Ala330)
Molecular Weight	The protein has a predicted molecular mass of 41.1 kDa after removal of the signal peptide. The apparent molecular mass of TSLP-hFc is approximately 55-70 kDa due to glycosylation.
Purity	The purity of the protein is greater than 95% as determined by SDS-PAGE and Coomassie blue staining.
Formulation & Reconstitution	Lyophilized from sterile PBS, pH 7.4. Normally 5% - 8% trehalose is added as protectants before lyophilization. Please see Certificate of Analysis for specific instructions of reconstitution.
Storage & Shipping	Store at -20°C to -80°C for 12 months in lyophilized form. After reconstitution, if not intended for use within a month, aliquot and store at -80°C (Avoid repeated freezing and thawing). Lyophilized proteins are shipped at ambient temperature.
Background	This gene encodes a hemopoietic cytokine proposed to signal through a heterodimeric receptor complex composed of the thymic stromal lymphopoietin receptor and the IL-7R alpha chain. It mainly impacts myeloid cells and induces the release of T cell-attracting chemokines from monocytes and enhances the maturation of CD11c(+) dendritic cells. The protein promotes T helper type 2 (TH2) cell responses that are associated with immunity in various inflammatory diseases, including asthma, allergic inflammation and chronic obstructive pulmonary disease. The protein is therefore considered a potential therapeutic target for the treatment of such diseases. In addition, the shorter (predominant) isoform is an antimicrobial protein, displaying antibacterial and antifungal activity against <i>B. cereus</i> , <i>E. coli</i> , <i>E. faecalis</i> , <i>S. mitis</i> , <i>S. epidermidis</i> , and <i>C. albicans</i> . Alternative splicing of this gene results in multiple transcript variants. [provided by RefSeq, Jul 2020]
Usage	Research use only
Conjugate	Unconjugated



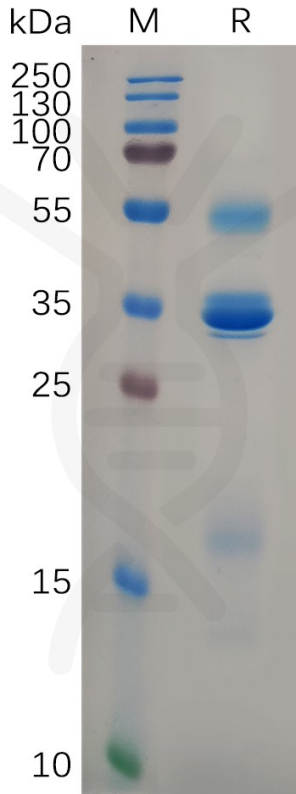


Figure 1. Human TSLP Protein, hFc Tag on SDS-PAGE under reducing condition.

Human TSLP, hFc Tagged protein ELISA

0.5 μ g of Human TSLP, hFc tagged protein per well

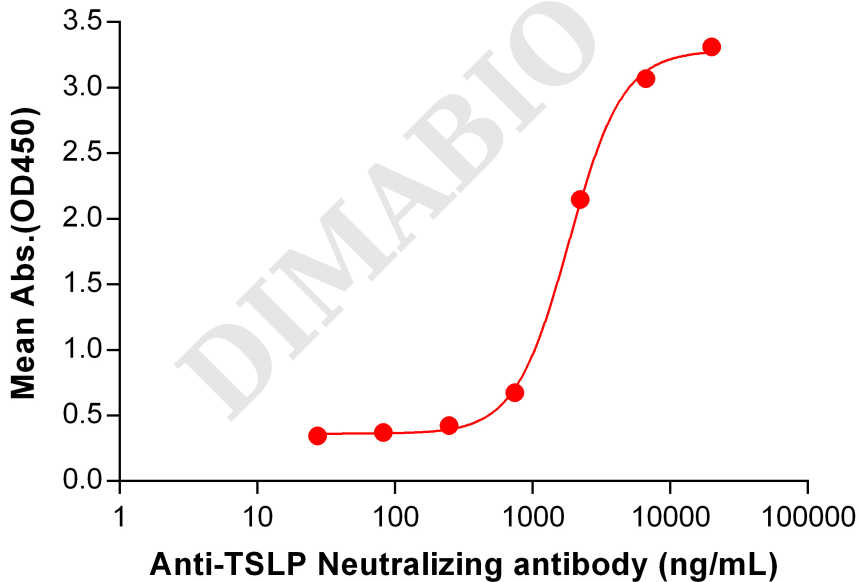


Figure 2. ELISA plate pre-coated by 5 μ g/mL (100 μ L/well) Human TSLP Protein, hFc Tag (PME100637) can bind Anti-TSLP Neutralizing antibody BME100112 in a linear range of 741-6667 ng/mL.



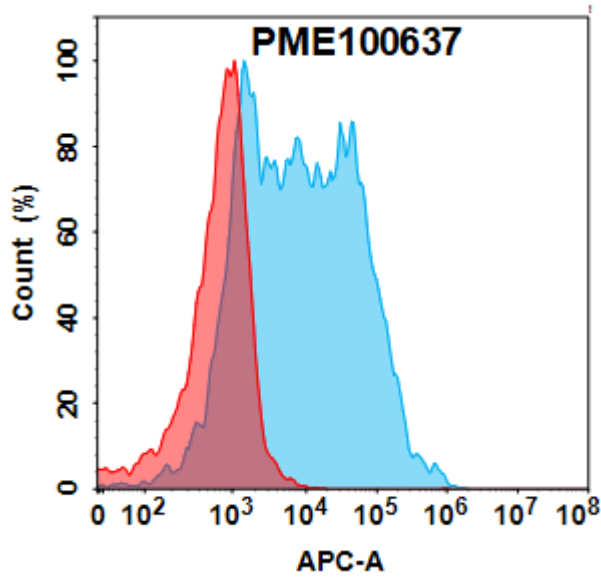


Figure 3. Flow cytometry analysis with 1µg/mL Human TSLP Protein, hFc Tag(PME100637) on Expi293 cells transfected with Human CRLF2 protein (Blue histogram) or Expi293 transfected with irrelevant protein (Red histogram).

DIMABIO CONFIDENTIAL

