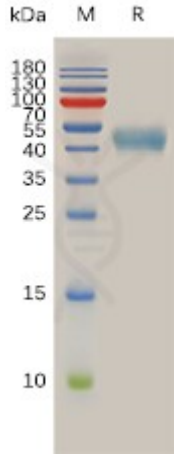


**PRODUCT INFORMATION**

<b>Target</b>	SSTR2
<b>Synonyms</b>	SRIF-1;SS2R
<b>Description</b>	Recombinant human SSTR2 protein with C-terminal human Fc tag
<b>Delivery</b>	In Stock
<b>Uniprot ID</b>	P30874
<b>Expression Host</b>	HEK293
<b>Tag</b>	C-Human Fc Tag
<b>Molecular Characterization</b>	SSTR2(Met1-Asn43) hFc(Glu99-Ala330)
<b>Molecular Weight</b>	The protein has a predicted molecular mass of 30.9 kDa after removal of the signal peptide. The apparent molecular mass of SSTR2-hFc is approximately 40-55 kDa due to glycosylation.
<b>Purity</b>	The purity of the protein is greater than 95% as determined by SDS-PAGE and Coomassie blue staining.
<b>Formulation &amp; Reconstitution</b>	Lyophilized from sterile PBS, pH 7.4. Normally 5% - 8% trehalose is added as protectants before lyophilization. Please see Certificate of Analysis for specific instructions of reconstitution.
<b>Storage &amp; Shipping</b>	Store at -20°C to -80°C for 12 months in lyophilized form. After reconstitution, if not intended for use within a month, aliquot and store at -80°C (Avoid repeated freezing and thawing). Lyophilized proteins are shipped at ambient temperature.
<b>Background</b>	Somatostatin acts at many sites to inhibit the release of many hormones and other secretory proteins. The biologic effects of somatostatin are probably mediated by a family of G protein-coupled receptors that are expressed in a tissue-specific manner. SSTR2 is a member of the superfamily of receptors having seven transmembrane segments and is expressed in highest levels in cerebrum and kidney. [provided by RefSeq, Jul 2008]
<b>Usage</b>	Research use only
<b>Conjugate</b>	Unconjugated

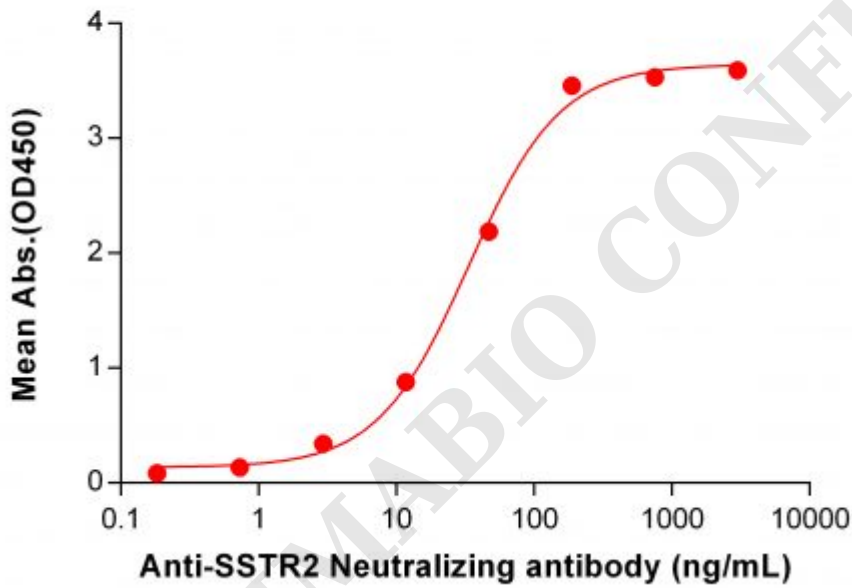




**Figure 1.** Human SSTR2 Protein, hFc Tag on SDS-PAGE under reducing condition.

### Human SSTR2, hFc Tagged protein ELISA

0.2  $\mu$ g of Human SSTR2, hFc tagged protein per well



**Figure 2.** ELISA plate pre-coated by 2  $\mu$ g/mL (100  $\mu$ L/well) Human SSTR2 Protein, hFc Tag (PME100806) can bind Anti-SSTR2 Neutralizing antibody ([getskuurl sku="BME100127"]) in a linear range of 2.93–187.50 ng/mL.

