

**PRODUCT INFORMATION**

<b>Target</b>	SLAMF3
<b>Synonyms</b>	CD229;hly9;mLY9;SLAMF3
<b>Description</b>	Recombinant human SLAMF3 protein with C-terminal human Fc
<b>Delivery</b>	In Stock
<b>Uniprot ID</b>	Q9HBG7
<b>Expression Host</b>	HEK293
<b>Tag</b>	C-Human Fc Tag
<b>Molecular Characterization</b>	SLAMF3(Lys48-Lys454) hFc(Glu99-Ala330)
<b>Molecular Weight</b>	The protein has a predicted molecular mass of 70.9 kDa after removal of the signal peptide. The apparent molecular mass of SLAMF3-hFc is approximately 100-130 kDa due to glycosylation.
<b>Purity</b>	The purity of the protein is greater than 90% as determined by SDS-PAGE and Coomassie blue staining.
<b>Formulation &amp; Reconstitution</b>	Lyophilized from sterile PBS, pH 7.4. Normally 5% - 8% trehalose is added as protectants before lyophilization. Please see Certificate of Analysis for specific instructions of reconstitution.
<b>Storage &amp; Shipping</b>	Store at -20°C to -80°C for 12 months in lyophilized form. After reconstitution, if not intended for use within a month, aliquot and store at -80°C (Avoid repeated freezing and thawing). Lyophilized proteins are shipped at ambient temperature.
<b>Background</b>	LY9 belongs to the SLAM family of immunomodulatory receptors (see SLAMF1, MIM 603492) and interacts with the adaptor molecule SAP (SH2D1A, MIM 300490) (Graham et al., 2006 [PubMed 16365421]).
<b>Usage</b>	Research use only
<b>Conjugate</b>	Unconjugated



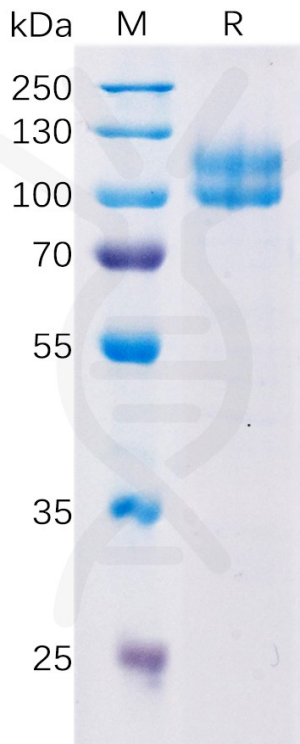


Figure 1. Human SLAMF3 Protein, hFc Tag on SDS-PAGE under reducing condition.

