

**PRODUCT INFORMATION**

<b>Target</b>	SLAMF1
<b>Synonyms</b>	SLAMF1;CD150;CDw150;SLAM;IPO-3
<b>Description</b>	Recombinant human SLAMF1 protein with C-terminal mouse Fc and 6×His tag
<b>Delivery</b>	In Stock
<b>Uniprot ID</b>	Q13291
<b>Expression Host</b>	HEK293
<b>Tag</b>	C-Mouse Fc and 6×His Tag
<b>Molecular Characterization</b>	SLAMF1(Ala21-Pro237) mFc(Pro99-Lys330) 6×His tag
<b>Molecular Weight</b>	The protein has a predicted molecular mass of 51.8 kDa after removal of the signal peptide.
<b>Purity</b>	The purity of the protein is greater than 95% as determined by SDS-PAGE and Coomassie blue staining.
<b>Formulation &amp; Reconstitution</b>	Lyophilized from sterile PBS, pH 7.4. Normally 5 % - 8% trehalose is added as protectants before lyophilization. Please see Certificate of Analysis for specific instructions of reconstitution.
<b>Storage &amp; Shipping</b>	Store at -20°C to -80°C for 12 months in lyophilized form. After reconstitution, if not intended for use within a month, aliquot and store at -80°C (Avoid repeated freezing and thawing). Lyophilized proteins are shipped at ambient temperature.
<b>Background</b>	SLAMF1 (Signaling Lymphocytic Activation Molecule Family Member 1) is a Protein Coding gene. Diseases associated with SLAMF1 include Measles and Subacute Sclerosing Panencephalitis. Among its related pathways are Dendritic Cells Developmental Lineage Pathway and T Cell Co-Signaling Pathway: Ligand-Receptor Interactions. Gene Ontology (GO) annotations related to this gene include antigen binding. An important paralog of this gene is LY9.
<b>Usage</b>	Research use only
<b>Conjugate</b>	Unconjugated





Figure 1. Human SLAMF1 Protein, mFc-His Tag on SDS-PAGE under reducing condition.

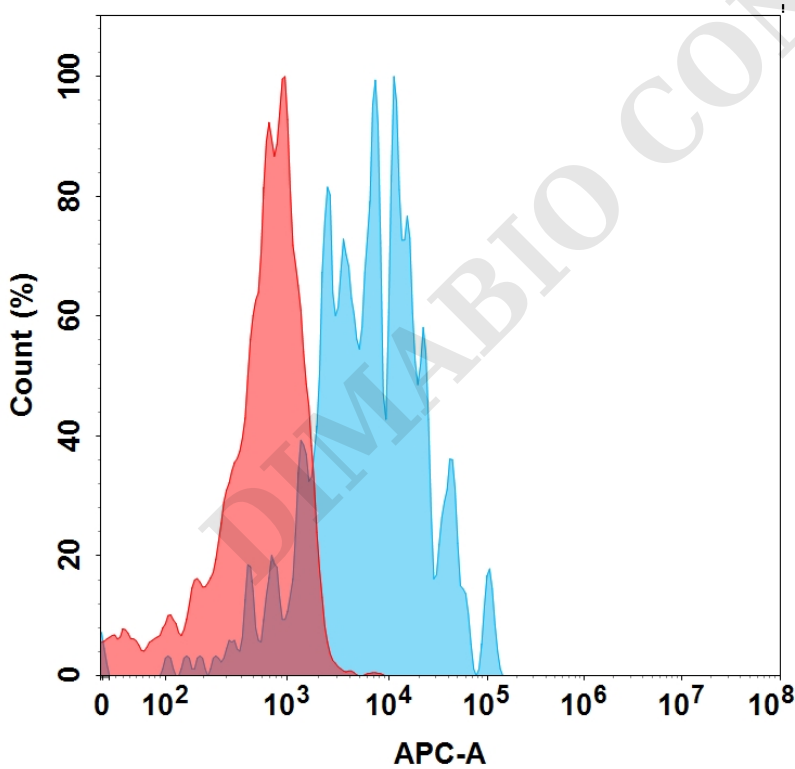


Figure 2. Flow cytometry analysis with 15  $\mu\text{g}/\text{mL}$  Human SLAMF1 Protein, mFc-His Tag (PME100024) on Expi293 cells transfected with Human SLAMF1 protein (Blue histogram) or Expi293 transfected with irrelevant protein (Red histogram).

