

PRODUCT INFORMATION

| | |
|---|---|
| Target | SEMA7A |
| Synonyms | CD108;CDw108;H-SEMA-K1;H-Sema-L;JMH;SEMAK1;SEMAL |
| Description | Recombinant Human SEMA7A Protein with C-terminal 6×His tag |
| Delivery | In Stock |
| Uniprot ID | O75326 |
| Expression Host | HEK293 |
| Tag | C-6×His Tag |
| Molecular Characterization | SEMA7A(Gln45-Leu647) 6×His tag |
| Molecular Weight | The protein has a predicted molecular mass of 69.2 kDa after removal of the signal peptide. The apparent molecular mass of SEMA7A-His is approximately 70-100 kDa due to glycosylation. |
| Purity | The purity of the protein is greater than 85% as determined by SDS-PAGE and Coomassie blue staining. |
| Formulation & Reconstitution | Lyophilized from sterile PBS, pH 7.4. Normally 5 % - 8% trehalose is added as protectants before lyophilization. Please see Certificate of Analysis for specific instructions of reconstitution. |
| Storage & Shipping | Store at -20°C to -80°C for 12 months in lyophilized form. After reconstitution, if not intended for use within a month, aliquot and store at -80°C (Avoid repeated freezing and thawing). Lyophilized proteins are shipped at ambient temperature. |
| Background | This gene encodes a member of the semaphorin family of proteins. The encoded preproprotein is proteolytically processed to generate the mature glycosylphosphatidylinositol (GPI)-anchored membrane glycoprotein. The encoded protein is found on activated lymphocytes and erythrocytes and may be involved in immunomodulatory and neuronal processes. The encoded protein carries the John Milton Hagen (JMH) blood group antigens. Mutations in this gene may be associated with reduced bone mineral density (BMD). Alternative splicing results in multiple transcript variants, at least one of which encodes an isoform that is proteolytically processed. [provided by RefSeq, Feb 2016] |
| Usage | Research use only |
| Conjugate | Unconjugated |



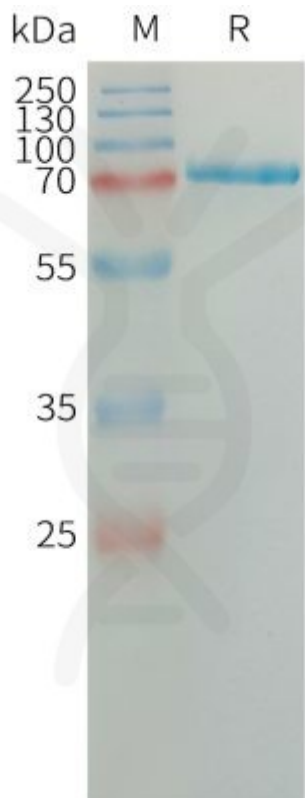


Figure 1. Human SEMA7A Protein, His Tag on SDS-PAGE under reducing condition.

DIMABIO CONFIDENTIAL

