

PRODUCT INFORMATION

Target	Mesothelin
Synonyms	MSLN; Mesothelin; MPF
Description	Recombinant human Mesothelin(296-580) protein with C-terminal mouse Fc and 6×His tag
Delivery	In Stock
Uniprot ID	Q13421
Expression Host	HEK293
Tag	C-Mouse Fc and 6×His Tag
Molecular Characterization	Mesothelin(Glu296-Gly580) mFc(Pro99-Lys330) 6×His tag
Molecular Weight	The protein has a predicted molecular mass of 59.3 kDa after removal of the signal peptide.
Purity	The purity of the protein is greater than 95% as determined by SDS-PAGE and Coomassie blue staining.
Formulation & Reconstitution	Lyophilized from sterile PBS, pH 7.4. Normally 5% - 8% trehalose is added as protectants before lyophilization. Please see Certificate of Analysis for specific instructions of reconstitution.
Storage & Shipping	Store at -20°C to -80°C for 12 months in lyophilized form. After reconstitution, if not intended for use within a month, aliquot and store at -80°C (Avoid repeated freezing and thawing). Lyophilized proteins are shipped at ambient temperature.
Background	This gene encodes a preproprotein that is proteolytically processed to generate two protein products, megakaryocyte potentiating factor and mesothelin. Megakaryocyte potentiating factor functions as a cytokine that can stimulate colony formation of bone marrow megakaryocytes. Mesothelin is a glycosylphosphatidylinositol-anchored cell-surface protein that may function as a cell adhesion protein. This protein is overexpressed in epithelial mesotheliomas, ovarian cancers and in specific squamous cell carcinomas. Alternative splicing results in multiple transcript variants, at least one of which encodes an isoform that is proteolytically processed.
Usage	Research use only



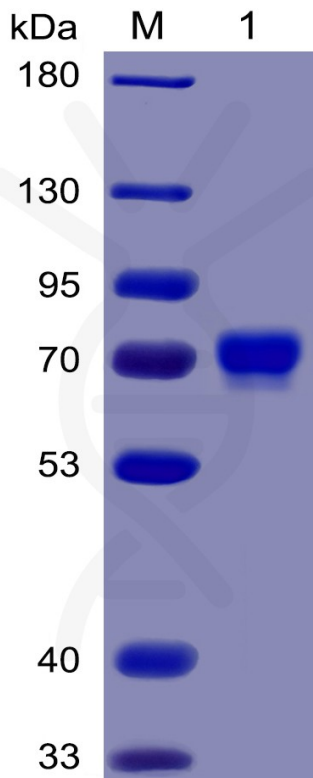


Figure 1. Human Mesothelin (296-580) Protein, mFc-His Tag on SDS-PAGE under reducing condition.

Human Mesothelin(296-580), mFc-His Tagged protein ELISA

0.2 μ g of Human Mesothelin(296-580), mFc-His Tagged protein per well

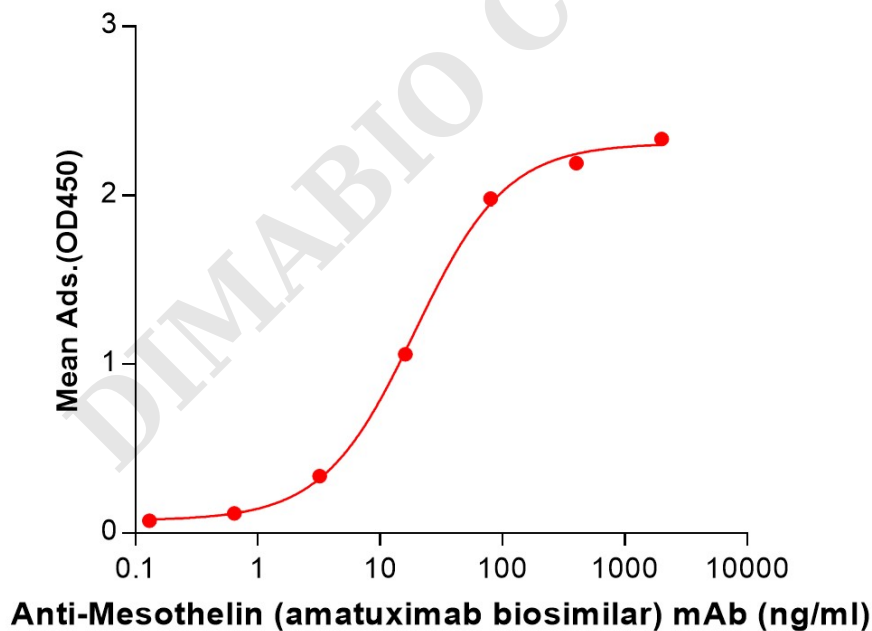


Figure 2. ELISA plate pre-coated by 2 μ g/mL (100 μ L/well) Human Mesothelin (296-580) Protein, mFc-His Tag (PME100031) can bind Anti-Mesothelin Neutralizing antibody (BME100021) in a linear range of 3.2-80.0 ng/ml.



Human Mesothelin (296-580), mFc-His Tagged protein ELISA

0.2 μg of Human Mesothelin (296-580), mFc-His tagged protein per well

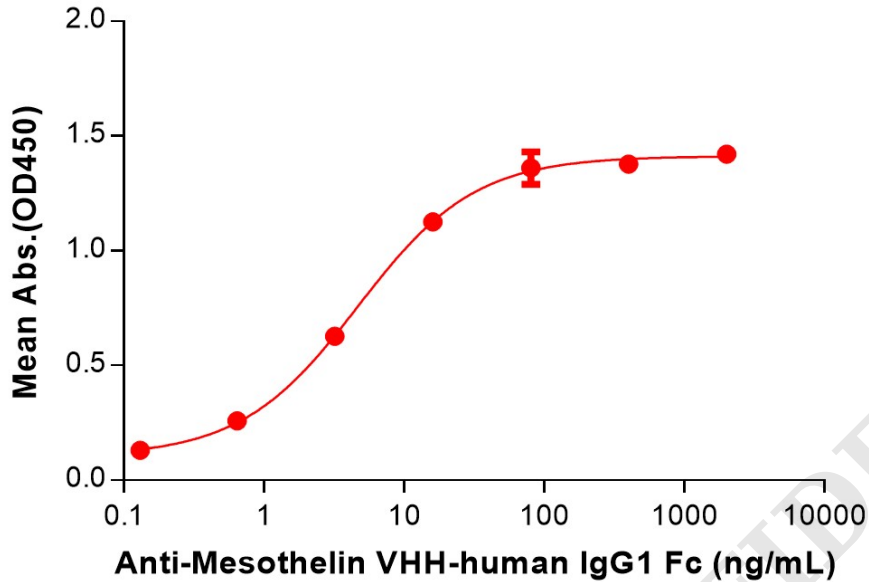


Figure 3. ELISA plate pre-coated by 2 $\mu\text{g}/\text{mL}$ (100 $\mu\text{L}/\text{well}$) Human Mesothelin (296-580) Protein, mFc-His Tag (PME100031) can bind Anti-Mesothelin VHH-human IgG1 Fc (BME100165) in a linear range of 0.64–16 ng/mL.

