

PRODUCT INFORMATION

Target	MICB
Synonyms	MIC-B;PERB11.2
Description	Recombinant Human MICB Protein with C-terminal 6×His tag
Delivery	In Stock
Uniprot ID	Q29980
Expression Host	HEK293
Tag	C-6×His Tag
Molecular Characterization	MICB(Ala23-Asp309) 6×His tag
Molecular Weight	The protein has a predicted molecular mass of 33.5 kDa after removal of the signal peptide. The apparent molecular mass of MICB-His is approximately 35-55 kDa due to glycosylation.
Purity	The purity of the protein is greater than 95% as determined by SDS-PAGE and Coomassie blue staining.
Formulation & Reconstitution	Lyophilized from sterile PBS, pH 7.4. Normally 5% - 8% trehalose is added as protectants before lyophilization. Please see Certificate of Analysis for specific instructions of reconstitution.
Storage & Shipping	Store at -20°C to -80°C for 12 months in lyophilized form. After reconstitution, if not intended for use within a month, aliquot and store at -80°C (Avoid repeated freezing and thawing). Lyophilized proteins are shipped at ambient temperature.
Background	This gene encodes a heavily glycosylated protein which is a ligand for the NKG2D type II receptor. Binding of the ligand activates the cytolytic response of natural killer (NK) cells, CD8 alphabeta T cells, and gammadelta T cells which express the receptor. This protein is stress-induced and is similar to MHC class I molecules, however, it does not associate with beta-2-microglobulin or bind peptides. Alternative splicing results in multiple transcript variants. [provided by RefSeq, Jan 2014]
Usage	Research use only
Conjugate	Unconjugated





Figure 1. Human MICB Protein, His Tag on SDS-PAGE under reducing condition.

Human MICB, His tagged protein ELISA

0.1 μg of Human MICB, His tagged protein per well

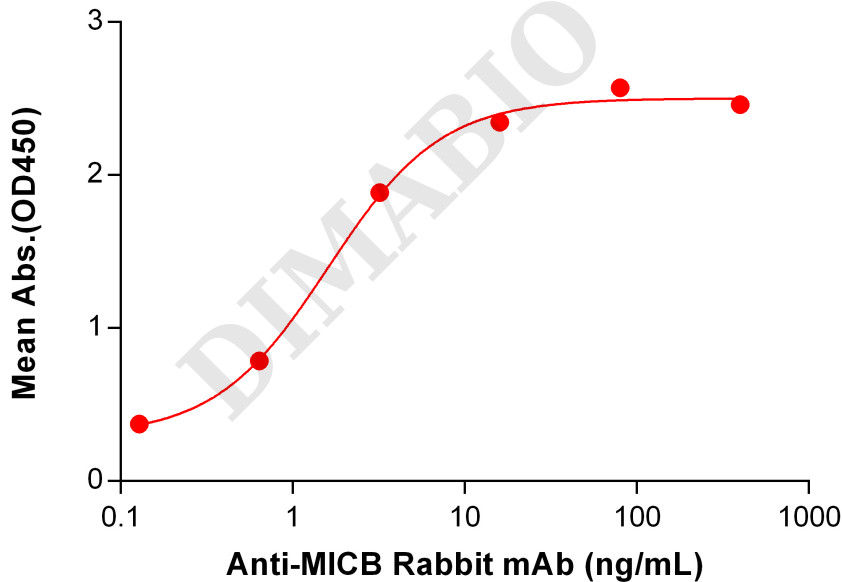


Figure 2. ELISA plate pre-coated by 1 $\mu\text{g}/\text{mL}$ (100 $\mu\text{L}/\text{well}$) Human MICB protein, His Tag (PME100516) can bind Anti-MICB Rabbit mAb in a linear range of 0.128-16 ng/mL.



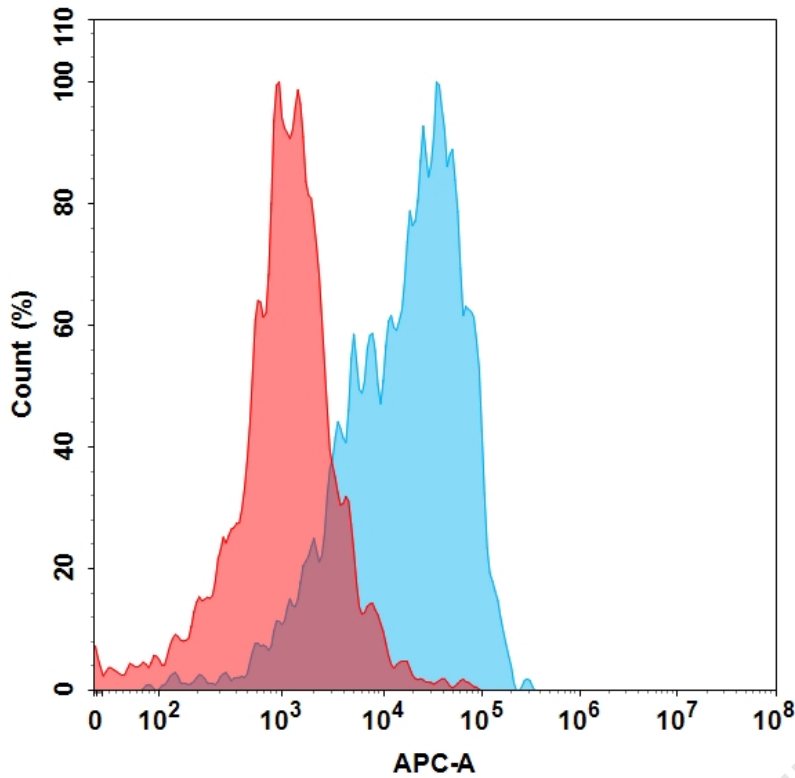


Figure 3. Flow cytometry analysis with 15 μ g/mL Human MICB Protein, His Tag (PME100516) on Expi293 cells transfected with Human NKG2D protein and Human DAP10 protein (Blue histogram) or Expi293 transfected with irrelevant protein (Red histogram).

DIMABIO CONFIDENTIAL

