

PRODUCT INFORMATION

Target	MADCAM1
Synonyms	MACAM1
Description	Recombinant human MADCAM1 Protein with C-terminal 6×His tag
Delivery	In Stock
Uniprot ID	Q13477
Expression Host	HEK293
Tag	C-6×His tag
Molecular Characterization	MADCAM1(Gln19-Gln317) 6×His tag
Molecular Weight	The protein has a predicted molecular mass of 32.2 kDa after removal of the signal peptide.
Purity	The purity of the protein is greater than 85% as determined by SDS-PAGE and Coomassie blue staining.
Formulation & Reconstitution	Lyophilized from sterile PBS, pH 7.4. Normally 5 % - 8% trehalose is added as protectants before lyophilization. Please see Certificate of Analysis for specific instructions.
Storage & Shipping	Store at -20°C to -80°C for 12 months in lyophilized form. After reconstitution, if not intended for use within a month, aliquot and store at -80°C (Avoid repeated freezing and thawing). Lyophilized proteins are shipped at ambient temperature.
Background	The protein encoded by this gene is an endothelial cell adhesion molecule that interacts preferentially with the leukocyte beta7 integrin LPAM-1 (alpha4beta7), L-selectin, and VLA-4 (alpha4beta1) on myeloid cells to direct leukocytes into mucosal and inflamed tissues. It is a member of the immunoglobulin family and is similar to ICAM1 and VCAM1. At least seven alternatively spliced transcripts encoding different protein isoforms have been found for this gene, but the full-length nature of some variants has not been determined. [provided by RefSeq, Jul 2008]
Usage	Research use only
Conjugate	Unconjugated



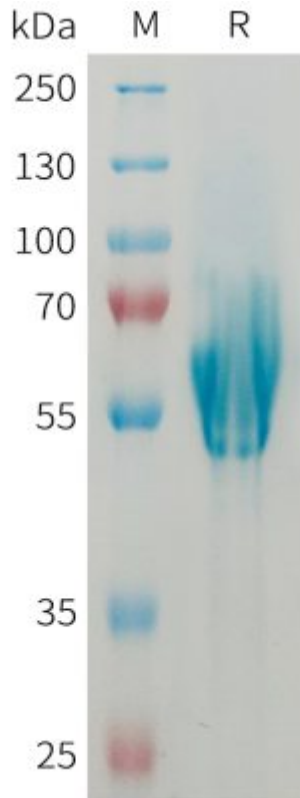


Figure 1. Human MADCAM1 Protein, His Tag on SDS-PAGE under reducing condition.

DIMABIO CONFIDENTIAL

