

PRODUCT INFORMATION

Target	LY6E
Synonyms	RIGE; SCA2; RIG-E; SCA-2; TSA-1
Description	Recombinant human LY6E Protein with C-terminal human Fc tag
Delivery	In Stock
Uniprot ID	Q16553
Expression Host	HEK293
Tag	C-Human Fc tag
Molecular Characterization	LY6E(Leu21-Phe100) hFc(Glu99-Ala330)
Molecular Weight	The protein has a predicted molecular mass of 34.5 kDa after removal of the signal peptide.
Purity	The purity of the protein is greater than 95% as determined by SDS-PAGE and Coomassie blue staining.
Formulation & Reconstitution	Lyophilized from sterile PBS, pH 7.4. Normally 5 % - 8% trehalose is added as protectants before lyophilization. Please see Certificate of Analysis for specific instructions of reconstitution.
Storage & Shipping	Store at -20°C to -80°C for 12 months in lyophilized form. After reconstitution, if not intended for use within a month, aliquot and store at -80°C (Avoid repeated freezing and thawing). Lyophilized proteins are shipped at ambient temperature.
Background	This gene belongs to the human Ly6 gene family and encodes a glycosylphosphatidyl-inositol (GPI)-anchored cell surface protein. The protein plays an important role in T cell physiology, oncogenesis and immunological regulation. The protein is also involved in modulation of viral infection by coronaviruses, SARS-CoV, MERS-CoV and SARS-CoV-2. [provided by RefSeq, Aug 2021]
Usage	Research use only
Conjugate	Unconjugated



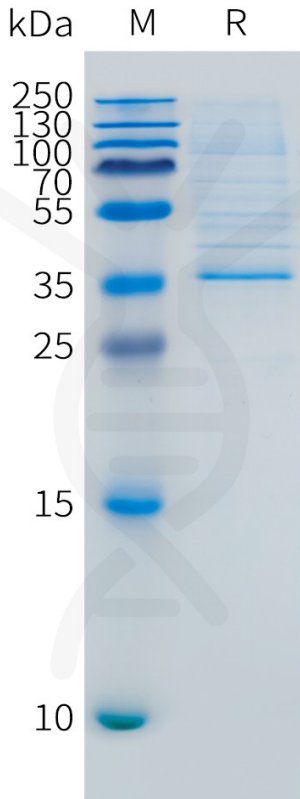


Figure 1. Human LY6E Protein, hFc Tag on SDS-PAGE under reducing condition.

Human LY6E, hFc Tagged protein ELISA

0.2 μ g of Human LY6E, hFc tagged protein per well

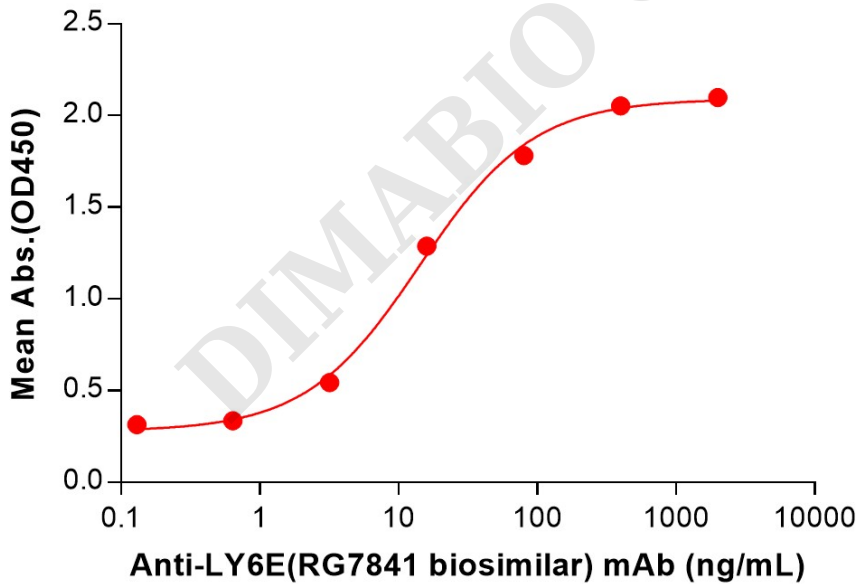


Figure 2. ELISA plate pre-coated by 2 μ g/mL (100 μ L/well) Human LY6E Protein, hFc Tag (PME101539) can bind Anti-LY6E(RG7841 biosimilar) mAb (BME100224) in a linear range of 3.20-80 ng/mL.

