

PRODUCT INFORMATION

Target	LRG1
Synonyms	HMFT1766;LRG
Description	Recombinant Human LRG1 Protein with C-terminal 6×His tag
Delivery	In Stock
Uniprot ID	P02750
Expression Host	HEK293
Tag	C-6×His Tag
Molecular Characterization	LRG1(Val36-Gln347) 6×His tag
Molecular Weight	The protein has a predicted molecular mass of 35.2 kDa after removal of the signal peptide. The apparent molecular mass of LRG1-His is approximately 35-55 kDa due to glycosylation.
Purity	The purity of the protein is greater than 85% as determined by SDS-PAGE and Coomassie blue staining.
Formulation & Reconstitution	Lyophilized from sterile PBS, pH 7.4. Normally 5 % - 8% trehalose is added as protectants before lyophilization. Please see Certificate of Analysis for specific instructions of reconstitution.
Storage & Shipping	Store at -20°C to -80°C for 12 months in lyophilized form. After reconstitution, if not intended for use within a month, aliquot and store at -80°C (Avoid repeated freezing and thawing). Lyophilized proteins are shipped at ambient temperature.
Background	The leucine-rich repeat (LRR) family of proteins, including LRG1, have been shown to be involved in protein-protein interaction, signal transduction, and cell adhesion and development. LRG1 is expressed during granulocyte differentiation (O'Donnell et al., 2002 [PubMed 12223515]).[supplied by OMIM, Mar 2008]
Usage	Research use only
Conjugate	Unconjugated



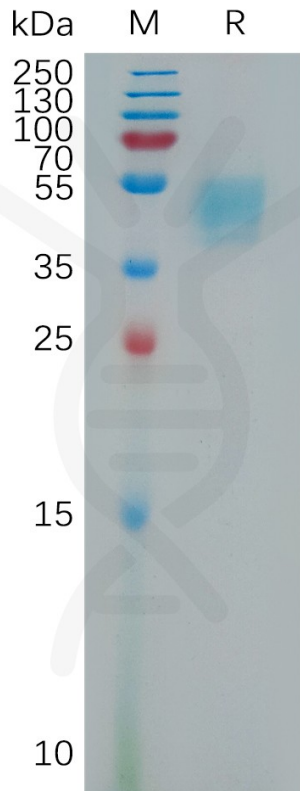


Figure 1. Human LRG1 Protein, His Tag on SDS-PAGE under reducing condition.

DIMABIO CONFIDENTIAL

