

**PRODUCT INFORMATION**

<b>Target</b>	IL1RA
<b>Synonyms</b>	P80; IL1R; CRMO3; IL1R1; CD121A; D2S1473; IL-1RT1; IL-1R-alpha
<b>Description</b>	Recombinant human IL1RA Protein with C-terminal mouse Fc tag
<b>Delivery</b>	In Stock
<b>Uniprot ID</b>	P14778
<b>Expression Host</b>	HEK293
<b>Tag</b>	C-mouse Fc tag
<b>Molecular Characterization</b>	IL1RA(Leu18-Thr332) mFc(Pro99-Lys330)
<b>Molecular Weight</b>	The protein has a predicted molecular mass of 62.4 kDa after removal of the signal peptide. The apparent molecular mass of IL1RA-mFc is approximately 70-100 kDa due to glycosylation.
<b>Purity</b>	The purity of the protein is greater than 95% as determined by SDS-PAGE and Coomassie blue staining.
<b>Formulation &amp; Reconstitution</b>	Lyophilized from sterile PBS, pH 7.4. Normally 5 % - 8% trehalose is added as protectants before lyophilization. Please see Certificate of Analysis for specific instructions of reconstitution.
<b>Storage &amp; Shipping</b>	Store at -20°C to -80°C for 12 months in lyophilized form. After reconstitution, if not intended for use within a month, aliquot and store at -80°C (Avoid repeated freezing and thawing). Lyophilized proteins are shipped at ambient temperature.
<b>Background</b>	This gene encodes a cytokine receptor that belongs to the interleukin-1 receptor family. The encoded protein is a receptor for interleukin-1 alpha, interleukin-1 beta, and interleukin-1 receptor antagonist. It is an important mediator involved in many cytokine-induced immune and inflammatory responses. This gene is located in a cluster of related cytokine receptor genes on chromosome 2q12. [provided by RefSeq, Dec 2013]
<b>Usage</b>	Research use only
<b>Conjugate</b>	Unconjugated



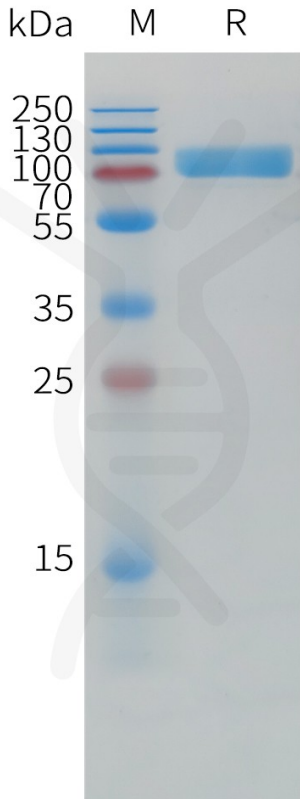


Figure 1. Human IL1RA Protein, mFc Tag on SDS-PAGE under reducing condition.

### Human IL1RA, mFc Tagged protein ELISA

0.2 µg of Human IL1B, hFc tagged protein per well

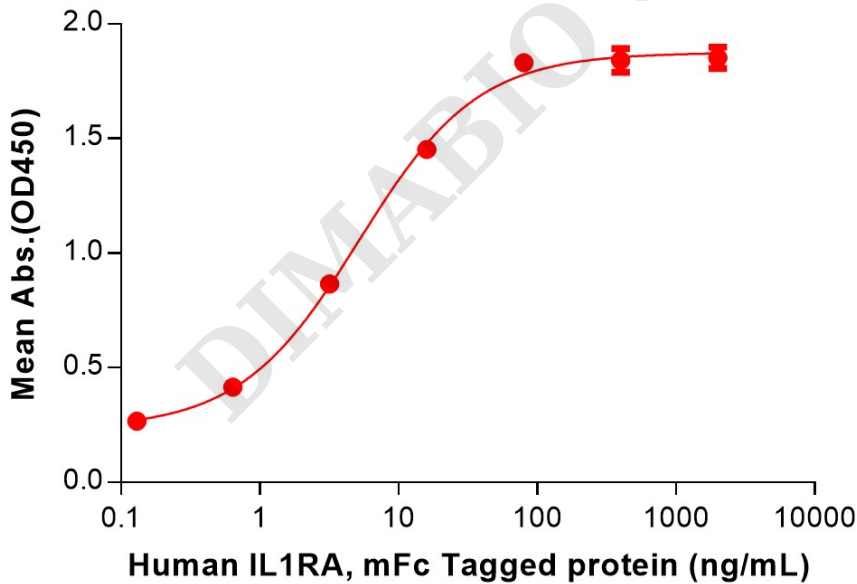


Figure 2. ELISA plate pre-coated by 2 µg/mL (100 µL/well) Human IL1B Protein, hFc Tag (PME100838) can bind Human IL1RA Protein, mFc Tag (PME101500) in a linear range of 0.64-80 ng/mL.

