

PRODUCT INFORMATION

Target	IL15
Synonyms	IL-15;Interleukin 15;MGC9721
Description	Recombinant Human IL15 Protein with C-terminal human Fc tag
Delivery	In Stock
Uniprot ID	P40933
Expression Host	HEK293
Tag	C-Human Fc Tag
Molecular Characterization	IL15(Asn49-Ser162) hFc(Glu99-Ala330)
Molecular Weight	The protein has a predicted molecular mass of 38.9 kDa after removal of the signal peptide. The apparent molecular mass of IL15-hFc is approximately 35-55kDa due to glycosylation.
Purity	The purity of the protein is greater than 95% as determined by SDS-PAGE and Coomassie blue staining.
Formulation & Reconstitution	Lyophilized from sterile PBS, pH 7.4. Normally 5% - 8% trehalose is added as protectants before lyophilization. Please see Certificate of Analysis for specific instructions of reconstitution.
Storage & Shipping	Store at -20°C to -80°C for 12 months in lyophilized form. After reconstitution, if not intended for use within a month, aliquot and store at -80°C (Avoid repeated freezing and thawing). Lyophilized proteins are shipped at ambient temperature.
Background	The protein encoded by this gene is a cytokine that regulates T and natural killer cell activation and proliferation. This cytokine and interleukine 2 share many biological activities. They are found to bind common hematopoietin receptor subunits, and may compete for the same receptor, and thus negatively regulate each other's activity. The number of CD8 memory cells is shown to be controlled by a balance between this cytokine and IL2. This cytokine induces the activation of JAK kinases, as well as the phosphorylation and activation of transcription activators STAT3, STAT5, and STAT6. Studies of the mouse counterpart suggested that this cytokine may increase the expression of apoptosis inhibitor BCL2L1/BCL-x(L), possibly through the transcription activation activity of STAT6, and thus prevent apoptosis. Alternatively spliced transcript variants of this gene have been reported. [provided by RefSeq, Feb 2011]
Usage	Research use only
Conjugate	Unconjugated



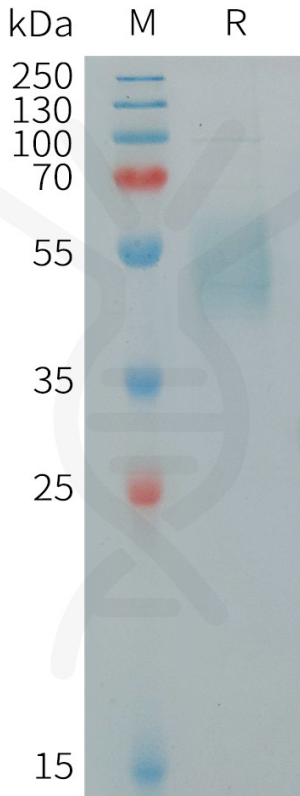


Figure 1. Human IL15 Protein, hFc Tag on SDS-PAGE under reducing condition.

Human IL15, hFc Tagged protein ELISA

0.2 μ g of Human IL15, hFc tagged protein per well

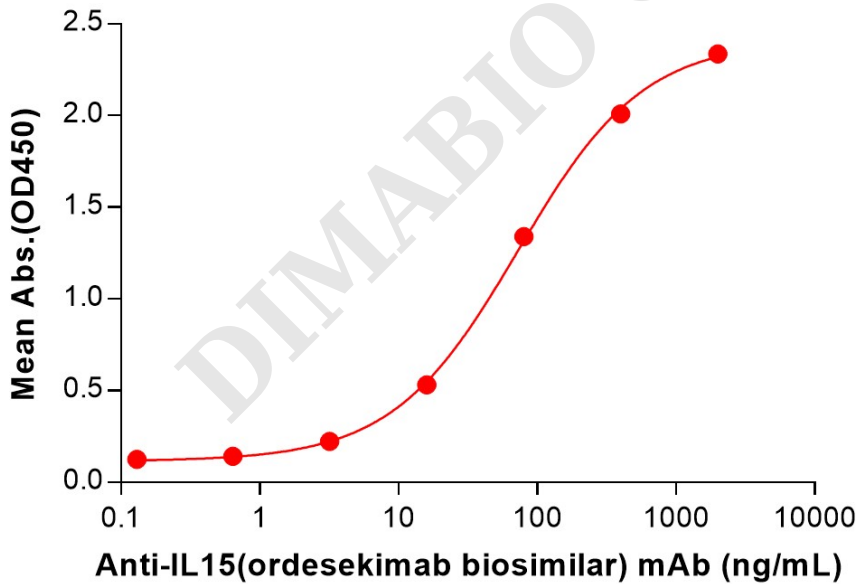


Figure 2. ELISA plate pre-coated by 2 μ g/mL (100 μ L/well) Human IL15 Protein, hFc Tag (PME100882) can bind Anti-IL15(Ordesekimab biosimilar) mAb (BME100253) in a linear range of 3.20-400 ng/mL.

