

PRODUCT INFORMATION

Target	IL10
Synonyms	CSIF;GVHDS;IL-10;IL10A;TGIF
Description	Recombinant Human IL10 Protein with N-terminal human Fc tag
Delivery	In Stock
Uniprot ID	P22301
Expression Host	HEK293
Tag	N-Human Fc Tag
Molecular Characterization	hFc(Glu99-Ala330) IL10(Ser19-Asn178)
Molecular Weight	The protein has a predicted molecular mass of 44.8 kDa after removal of the signal peptide. The apparent molecular mass of hFc-IL10 is approximately 35-55 kDa due to glycosylation.
Purity	The purity of the protein is greater than 95% as determined by SDS-PAGE and Coomassie blue staining.
Formulation & Reconstitution	Lyophilized from sterile PBS, pH 7.4. Normally 5% - 8% trehalose is added as protectants before lyophilization. Please see Certificate of Analysis for specific instructions of reconstitution.
Storage & Shipping	Store at -20°C to -80°C for 12 months in lyophilized form. After reconstitution, if not intended for use within a month, aliquot and store at -80°C (Avoid repeated freezing and thawing). Lyophilized proteins are shipped at ambient temperature.
Background	The protein encoded by this gene is a cytokine produced primarily by monocytes and to a lesser extent by lymphocytes. This cytokine has pleiotropic effects in immunoregulation and inflammation. It down-regulates the expression of Th1 cytokines, MHC class II Ags, and costimulatory molecules on macrophages. It also enhances B cell survival, proliferation, and antibody production. This cytokine can block NF-kappa B activity, and is involved in the regulation of the JAK-STAT signaling pathway. Knockout studies in mice suggested the function of this cytokine as an essential immunoregulator in the intestinal tract. Mutations in this gene are associated with an increased susceptibility to HIV-1 infection and rheumatoid arthritis. [provided by RefSeq, May 2020]
Usage	Research use only
Conjugate	Unconjugated



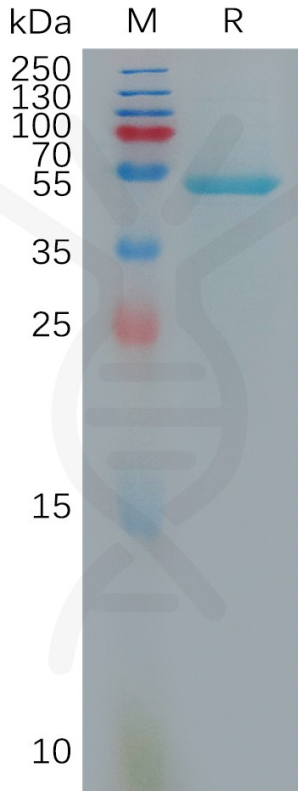


Figure 1. Human IL10 Protein, hFc Tag on SDS-PAGE under reducing condition.

Human IL10, hFc Tagged protein ELISA

0.2 μ g of Human IL10, hFc tagged protein per well

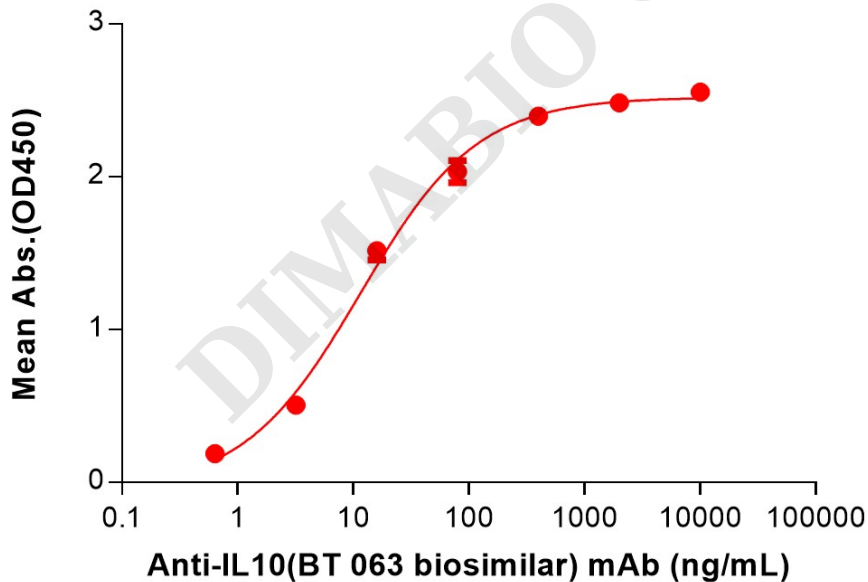


Figure 2. ELISA plate pre-coated by 2 μ g/mL (100 μ L/well) Human IL10 Protein, hFc Tag (PME100878) can bind Anti-IL10(BT 063 biosimilar) mAb (BME100254) in a linear range of 0.64-80 ng/mL.

