

PRODUCT INFORMATION

Target	IgHE
Synonyms	IgE
Description	Recombinant Human IGHE Protein with C-terminal 6×His tag
Delivery	In Stock
Uniprot ID	P01854
Expression Host	HEK293
Tag	C-6×His Tag
Molecular Characterization	IGHE(Ala1-Lys428) 6×His tag
Molecular Weight	The protein has a predicted molecular mass of 47.8 kDa after removal of the signal peptide.
Purity	The purity of the protein is greater than 85% as determined by SDS-PAGE and Coomassie blue staining.
Formulation & Reconstitution	Lyophilized from sterile PBS, pH 7.4. Normally 5 % - 8% trehalose is added as protectants before lyophilization. Please see Certificate of Analysis for specific instructions of reconstitution.
Storage & Shipping	Store at -20°C to -80°C for 12 months in lyophilized form. After reconstitution, if not intended for use within a month, aliquot and store at -80°C (Avoid repeated freezing and thawing). Lyophilized proteins are shipped at ambient temperature.
Background	Predicted to enable antigen binding activity and immunoglobulin receptor binding activity. Predicted to be involved in several processes, including activation of immune response; defense response to other organism; and phagocytosis. Predicted to be located in extracellular region. Predicted to be part of immunoglobulin complex, circulating. Predicted to be active in external side of plasma membrane. [provided by Alliance of Genome Resources, Apr 2022]
Usage	Research use only



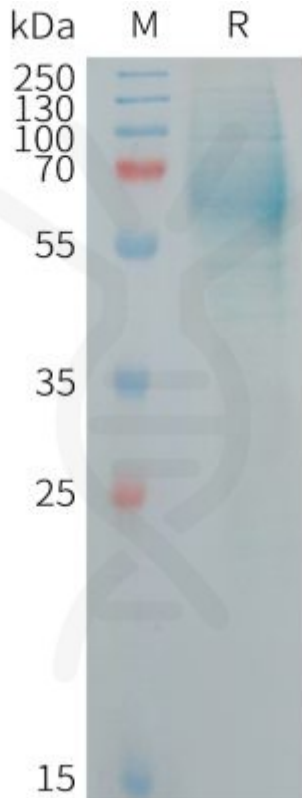


Figure 1. Human IGHE Protein, His Tag on SDS-PAGE under reducing condition.

DIMABIO CONFIDENTIAL

