

## PRODUCT INFORMATION

<b>Target</b>	IGFBP7
<b>Synonyms</b>	IBP-7;TAF;IGFBP-rP1;MAC25 protein
<b>Description</b>	Recombinant human IGFBP7 Protein with N-terminal Human Fc tag
<b>Delivery</b>	In Stock
<b>Uniprot ID</b>	Q16270
<b>Expression Host</b>	HEK293
<b>Tag</b>	N-Human Fc Tag
<b>Molecular Characterization</b>	hFc(Glu99-Ala330) IGFBP7(Asp30-Leu282)
<b>Molecular Weight</b>	The protein has a predicted molecular mass of 52.3 kDa after removal of the signal peptide. The apparent molecular mass of hFc-IGFBP7 is approximately 55-70 kDa due to glycosylation.
<b>Purity</b>	The purity of the protein is greater than 95% as determined by SDS-PAGE and Coomassie blue staining.
<b>Formulation &amp; Reconstitution</b>	Lyophilized from sterile PBS, pH 7.4. Normally 5% - 8% trehalose is added as protectants before lyophilization. Please see Certificate of Analysis for specific instructions of reconstitution.
<b>Storage &amp; Shipping</b>	Store at -20°C to -80°C for 12 months in lyophilized form. After reconstitution, if not intended for use within a month, aliquot and store at -80°C (Avoid repeated freezing and thawing). Lyophilized proteins are shipped at ambient temperature.
<b>Background</b>	This gene encodes a member of the insulin-like growth factor (IGF)-binding protein (IGFBP) family. IGFBPs bind IGFs with high affinity, and regulate IGF availability in body fluids and tissues and modulate IGF binding to its receptors. This protein binds IGF-I and IGF-II with relatively low affinity, and belongs to a subfamily of low-affinity IGFBPs. It also stimulates prostacyclin production and cell adhesion. Alternatively spliced transcript variants encoding different isoforms have been described for this gene, and one variant has been associated with retinal arterial macroaneurysm (PMID:21835307). [provided by RefSeq, Dec 2011]
<b>Usage</b>	Research use only
<b>Conjugate</b>	Unconjugated



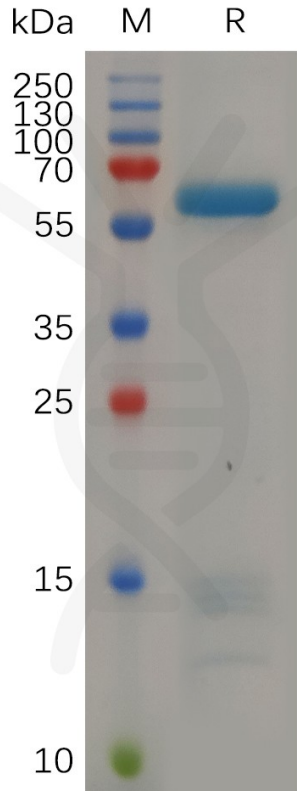


Figure 1. Human IGFBP7, N-hFc Tag on SDS-PAGE under reducing condition.

### Human IGFBP7, hFc Tagged protein ELISA

0.2  $\mu$ g of Human IGFBP7, hFc tagged protein per well

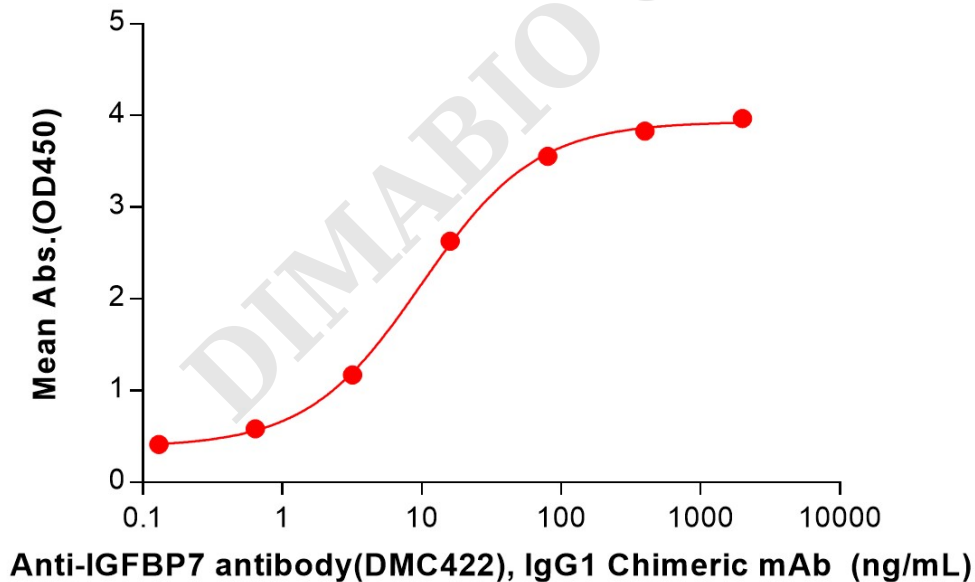


Figure 2. ELISA plate pre-coated by 2  $\mu$ g/mL (100  $\mu$ L/well) Human IGFBP7 Protein, hFc Tag (PME100696) can bind Anti-IGFBP7 antibody (DMC422), IgG1 Chimeric mAb in a linear range of 3.20-80 ng/mL.

