

**PRODUCT INFORMATION**

<b>Target</b>	HVEM
<b>Synonyms</b>	ATAR;CD270;HVEA;HVEM;LIGHTR;TR2
<b>Description</b>	Recombinant Human HVEM Protein with C-terminal 6×His tag
<b>Delivery</b>	In Stock
<b>Uniprot ID</b>	Q92956
<b>Expression Host</b>	HEK293
<b>Tag</b>	C-6×His Tag
<b>Molecular Characterization</b>	HVEM(Leu39-Val202) 6×His tag
<b>Molecular Weight</b>	The protein has a predicted molecular mass of 18.2 kDa after removal of the signal peptide. The apparent molecular mass of HVEM-His is approximately 25-55 kDa due to glycosylation.
<b>Purity</b>	The purity of the protein is greater than 95% as determined by SDS-PAGE and Coomassie blue staining.
<b>Formulation &amp; Reconstitution</b>	Lyophilized from sterile PBS, pH 7.4. Normally 5% - 8% trehalose is added as protectants before lyophilization. Please see Certificate of Analysis for specific instructions of reconstitution.
<b>Storage &amp; Shipping</b>	Store at -20°C to -80°C for 12 months in lyophilized form. After reconstitution, if not intended for use within a month, aliquot and store at -80°C (Avoid repeated freezing and thawing). Lyophilized proteins are shipped at ambient temperature.
<b>Background</b>	This gene encodes a member of the TNF (tumor necrosis factor) receptor superfamily. The encoded protein functions in signal transduction pathways that activate inflammatory and inhibitory T-cell immune response. It binds herpes simplex virus (HSV) viral envelope glycoprotein D (gD), mediating its entry into cells. Alternative splicing results in multiple transcript variants.
<b>Usage</b>	Research use only
<b>Conjugate</b>	Unconjugated



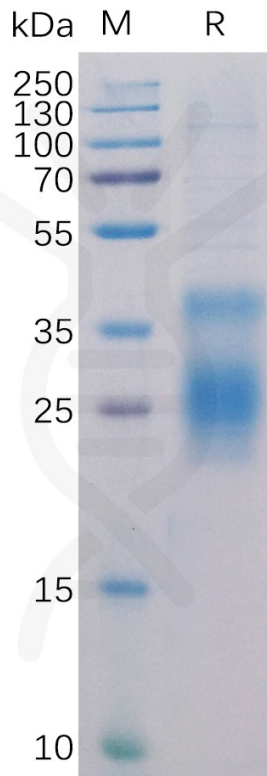


Figure 1. Human HVEM Protein, His Tag on SDS-PAGE under reducing condition.

### Human HVEM, His Tagged protein ELISA

0.2 µg of HVEM, His Tagged protein per well

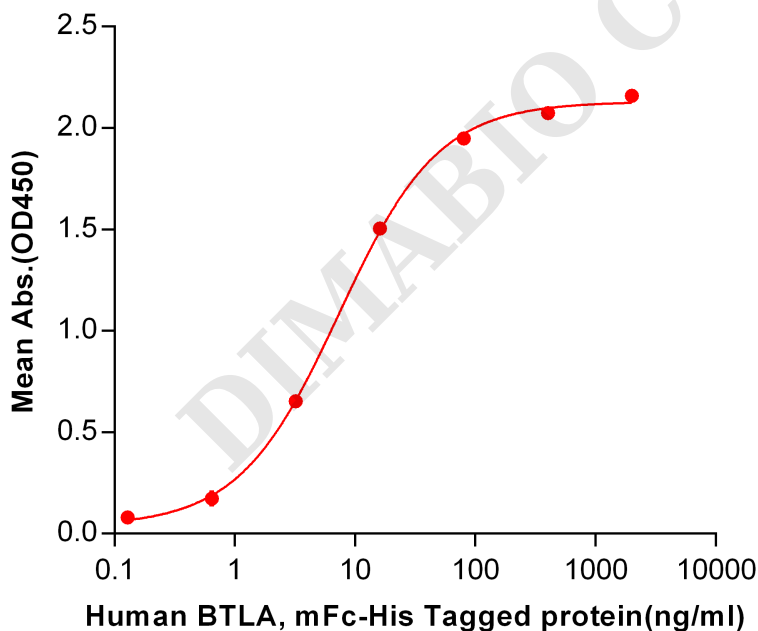


Figure 2. ELISA plate pre-coated by 2 µg/ml (100 µl/well) Human HVEM, His tagged protein (PME100273) can bind Human BTLA, mFc-His tagged protein PME100048 in a linear range of 0.64-80 ng/ml.



### Human HVEM, His Tagged protein ELISA

0.2  $\mu$ g of HVEM, His Tagged protein per well

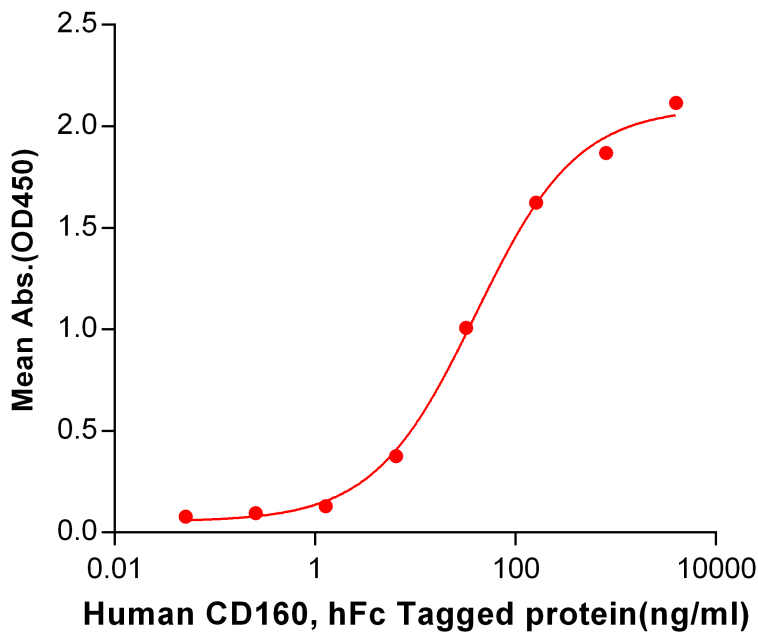


Figure 3. ELISA plate pre-coated by 2  $\mu$ g/ml (100  $\mu$ l/well) Human HVEM, His tagged protein (PME100273) can bind Human CD160, hFc tagged protein PME100055 in a linear range of 1.28-160 ng/ml.

### Human HVEM, His Tagged protein ELISA

0.2  $\mu$ g of Human HVEM, His Tagged protein per well

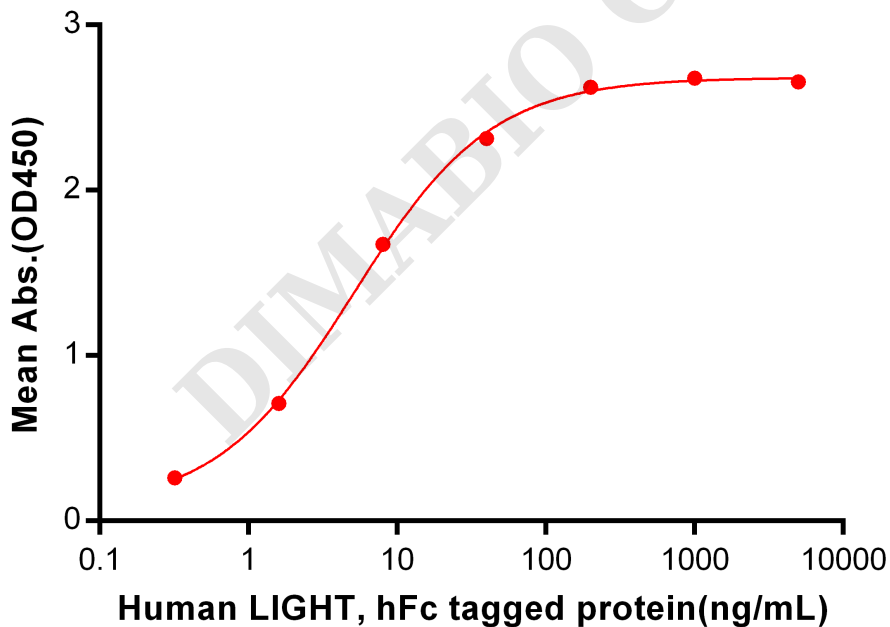


Figure 4. ELISA plate pre-coated by 2  $\mu$ g/ml (100  $\mu$ l/well) Human HVEM, His tagged protein (PME100273) can bind Human LIGHT, hFc tagged protein PME100049 in a linear range of 0.32-40 ng/ml.



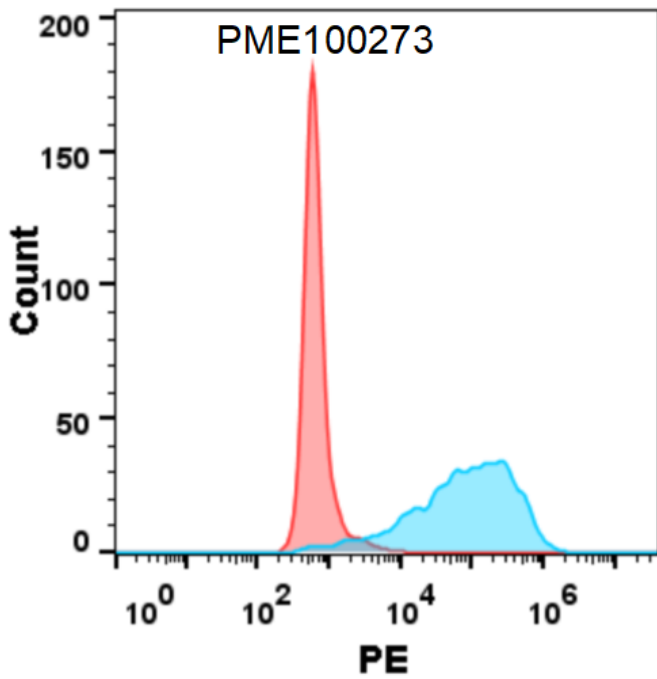


Figure 5. Flow cytometry analysis with 15  $\mu\text{g}/\text{mL}$  Human HVEM Protein, His tag (PME100273) on Expi293 cells transfected with human BTLA (Blue histogram) or Expi293 transfected with irrelevant protein (Red histogram).

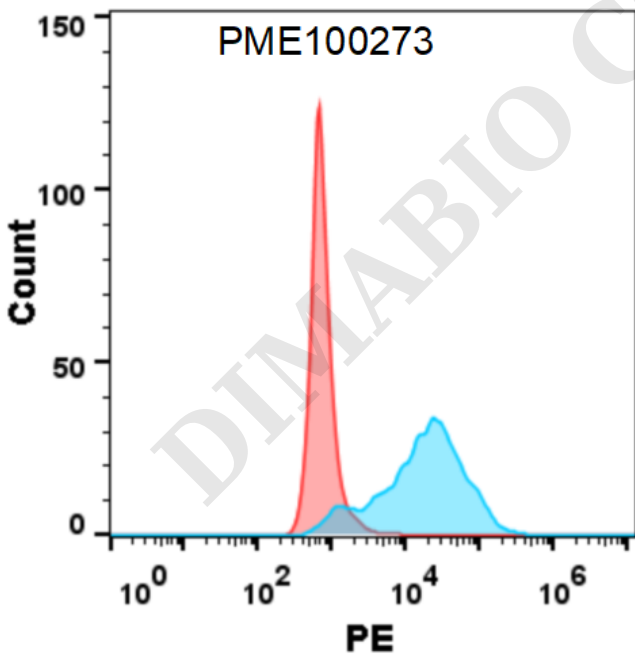


Figure 6. Flow cytometry analysis with 15  $\mu\text{g}/\text{mL}$  Human HVEM Protein, His tag (PME100273) on Expi293 cells transfected with human LIGHT (Blue histogram) or Expi293 transfected with irrelevant protein (Red histogram).

