

PRODUCT INFORMATION

| | |
|---|--|
| Target | HE4 |
| Synonyms | WFDC2; WAP5; EDDM4; dj461P17.6 |
| Description | Recombinant human HE4 Protein with C-terminal human Fc tag |
| Delivery | In Stock |
| Uniprot ID | Q14508 |
| Expression Host | HEK293 |
| Tag | C-Human Fc tag |
| Molecular Characterization | HE4(Glu31-Phe124) hFc(Glu99-Ala330) |
| Molecular Weight | The protein has a predicted molecular mass of 36.2 kDa after removal of the signal peptide. The apparent molecular mass of HE4-hFc is approximately 35-55 kDa due to glycosylation. |
| Purity | The purity of the protein is greater than 95% as determined by SDS-PAGE and Coomassie blue staining. |
| Formulation & Reconstitution | Lyophilized from sterile PBS, pH 7.4. Normally 5% - 8% trehalose is added as protectants before lyophilization. Please see Certificate of Analysis for specific instructions of reconstitution. |
| Storage & Shipping | Store at -20°C to -80°C for 12 months in lyophilized form. After reconstitution, if not intended for use within a month, aliquot and store at -80°C (Avoid repeated freezing and thawing). Lyophilized proteins are shipped at ambient temperature. |
| Background | This gene encodes a protein that is a member of the WFDC domain family. The WFDC domain, or WAP Signature motif, contains eight cysteines forming four disulfide bonds at the core of the protein, and functions as a protease inhibitor in many family members. This gene is expressed in pulmonary epithelial cells, and was also found to be expressed in some ovarian cancers. The encoded protein is a small secretory protein, which may be involved in sperm maturation. [provided by RefSeq, Jul 2008] |
| Usage | Research use only |



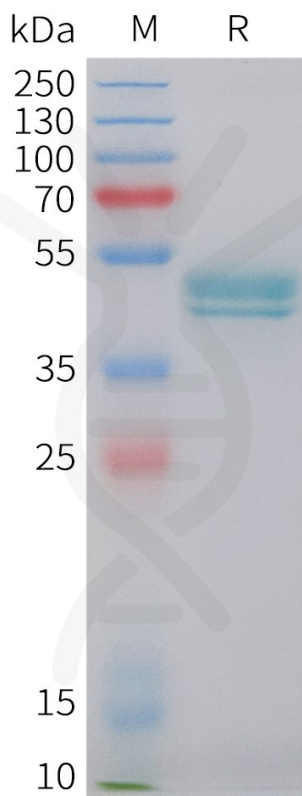


Figure 1. Human HE4 Protein, hFc Tag on SDS-PAGE under reducing condition.

DIMABIO CONFIDENTIAL

