

PRODUCT INFORMATION

Target	GRPR
Synonyms	BB2;BB2R;BRS2
Description	Recombinant Human GRPR Protein with C-terminal human Fc tag
Delivery	In Stock
Uniprot ID	P30550
Expression Host	HEK293
Tag	C-Human Fc Tag
Molecular Characterization	GRPR(Met1-Gly38) hFc(Glu99-Ala330)
Molecular Weight	The protein has a predicted molecular mass of 30.4 kDa after removal of the signal peptide. The apparent molecular mass of GRPR-hFc is approximately 35-55 kDa due to glycosylation.
Purity	The purity of the protein is greater than 95% as determined by SDS-PAGE and Coomassie blue staining.
Formulation & Reconstitution	Lyophilized from sterile PBS, pH 7.4. Normally 5% - 8% trehalose is added as protectants before lyophilization. Please see Certificate of Analysis for specific instructions of reconstitution.
Storage & Shipping	Store at -20°C to -80°C for 12 months in lyophilized form. After reconstitution, if not intended for use within a month, aliquot and store at -80°C (Avoid repeated freezing and thawing). Lyophilized proteins are shipped at ambient temperature.
Background	Gastrin-releasing peptide (GRP) regulates numerous functions of the gastrointestinal and central nervous systems, including release of gastrointestinal hormones, smooth muscle cell contraction, and epithelial cell proliferation and is a potent mitogen for neoplastic tissues. The effects of GRP are mediated through the gastrin-releasing peptide receptor. This receptor is a glycosylated, 7-transmembrane G-protein coupled receptor that activates the phospholipase C signaling pathway. The receptor is aberrantly expressed in numerous cancers such as those of the lung, colon, and prostate. An individual with autism and multiple exostoses was found to have a balanced translocation between chromosome 8 and a chromosome X breakpoint located within the gastrin-releasing peptide receptor gene. [provided by RefSeq, Jul 2008]
Usage	Research use only



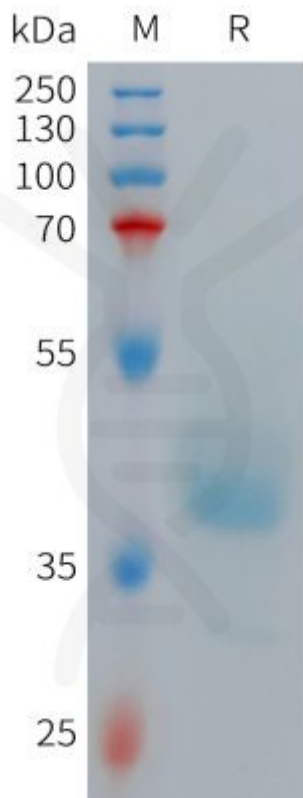


Figure 1. Human GRPR Protein, hFc Tag on SDS-PAGE under reducing condition.

DIMABIO CONFIDENTIAL

