

PRODUCT INFORMATION

| | |
|------------------------------|---|
| Target | GPRC5D |
| Synonyms | GPRC5D |
| Description | Recombinant human GPRC5D protein with C-terminal human Fc tag |
| Delivery | In Stock |
| Uniprot ID | Q9NZD1 |
| Expression Host | HEK293 |
| Tag | C-Human Fc Tag |
| Molecular Characterization | GPRC5D(Met1-Glu27) hFc(Glu99-Ala330) |
| Molecular Weight | The protein has a predicted molecular mass of 28.4 kDa after removal of the signal peptide. The apparent molecular mass of GPRC5D-hFc is approximately 25-35 kDa due to glycosylation. |
| Purity | The purity of the protein is greater than 95% as determined by SDS-PAGE and Coomassie blue staining. |
| Formulation & Reconstitution | Lyophilized from sterile PBS, pH 7.4. Normally 5 % - 8% trehalose is added as protectants before lyophilization. Please see Certificate of Analysis for specific instructions of reconstitution. |
| Storage & Shipping | Store at -20°C to -80°C for 12 months in lyophilized form. After reconstitution, if not intended for use within a month, aliquot and store at -80°C (Avoid repeated freezing and thawing). Lyophilized proteins are shipped at ambient temperature. |
| Background | The protein encoded by this gene is a member of the G protein-coupled receptor family, however, the specific function of this gene has not yet been determined. |
| Usage | Research use only |
| Conjugate | Unconjugated |



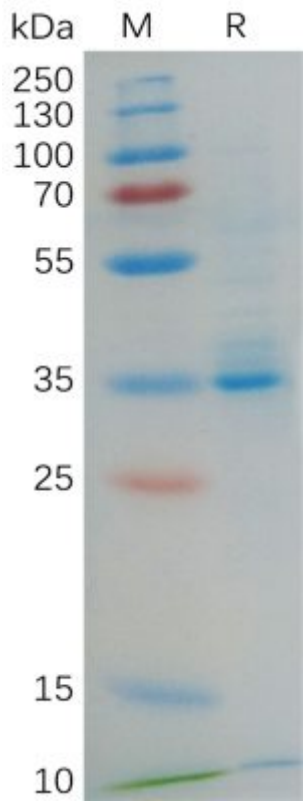


Figure 1. Human GPRC5D Protein, hFc Tag on SDS-PAGE under reducing condition.

Human GPRC5D, hFc Tagged protein ELISA
0.2 µg of Human GPRC5D, hFc tagged protein per well

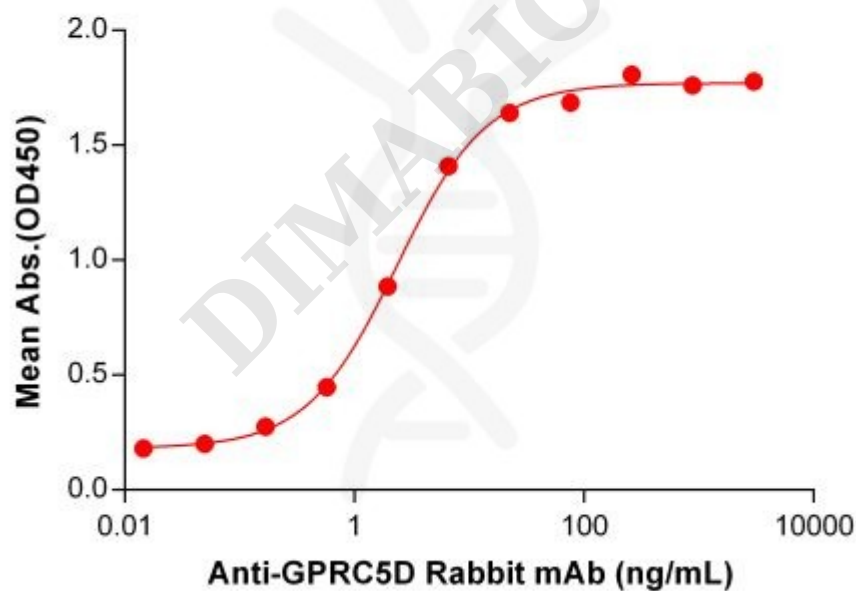


Figure 2. ELISA plate pre-coated by 2 µg/mL (100 µL/well) Human GPRC5D Protein, hFc Tag (PME100677) can bind Anti-GPRC5D antibody (DM91), Rabbit mAb ([getskuurl sku="DME100091"]) in a linear range of 0.17–22.45 ng/mL.

