

## PRODUCT INFORMATION

<b>Target</b>	GM-CSFR
<b>Synonyms</b>	alphaGMR;CD116;CDw116;CSF2R;CSF2RAX;CSF2RAY;CSF2RX;CSF2RY;GM-CSF-R-alpha;GMC5FR;GMC5FR-alpha;GMR;GMR-alpha;SMDP4
<b>Description</b>	Recombinant Human GM-CSFR Protein with C-terminal human Fc tag
<b>Delivery</b>	In Stock
<b>Uniprot ID</b>	P15509
<b>Expression Host</b>	HEK293
<b>Tag</b>	C-Human Fc Tag
<b>Molecular Characterization</b>	GM-CSFR(Glu23-Gly320) hFc(Glu99-Ala330)
<b>Molecular Weight</b>	The protein has a predicted molecular mass of 60.6 kDa after removal of the signal peptide. The apparent molecular mass of GM-CSFR-hFc is approximately 70-130 kDa due to glycosylation.
<b>Purity</b>	The purity of the protein is greater than 95% as determined by SDS-PAGE and Coomassie blue staining.
<b>Formulation &amp; Reconstitution</b>	Lyophilized from sterile PBS, pH 7.4. Normally 5% - 8% trehalose is added as protectants before lyophilization. Please see Certificate of Analysis for specific instructions of reconstitution.
<b>Storage &amp; Shipping</b>	Store at -20°C to -80°C for 12 months in lyophilized form. After reconstitution, if not intended for use within a month, aliquot and store at -80°C (Avoid repeated freezing and thawing). Lyophilized proteins are shipped at ambient temperature.
<b>Background</b>	The protein encoded by this gene is the alpha subunit of the heterodimeric receptor for colony stimulating factor 2, a cytokine which controls the production, differentiation, and function of granulocytes and macrophages. The encoded protein is a member of the cytokine family of receptors. This gene is found in the pseudoautosomal region (PAR) of the X and Y chromosomes. Multiple transcript variants encoding different isoforms have been found for this gene, with some of the isoforms being membrane-bound and others being soluble. [provided by RefSeq, Jul 2008]
<b>Usage</b>	Research use only

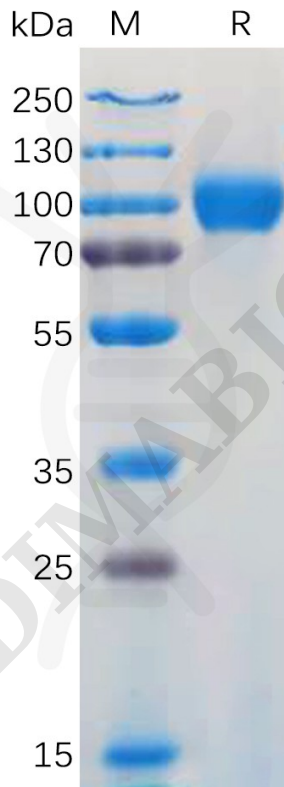


Figure 1. Human GM-CSFR Protein, hFc Tag on SDS-PAGE under reducing condition.

