

PRODUCT INFORMATION

Target	GLP2R
Synonyms	GLP-2 receptor; GLP-2-R; GLP-2R
Description	Recombinant human GLP2R Protein with C-terminal 6×His tag
Delivery	In Stock
Uniprot ID	O95838
Expression Host	HEK293
Tag	C-6×His tag
Molecular Characterization	GLP2R(Met1-Ala173) 6×His tag
Molecular Weight	The protein has a predicted molecular mass of 20.1 kDa after removal of the signal peptide.
Purity	The purity of the protein is greater than 85% as determined by SDS-PAGE and Coomassie blue staining.
Formulation & Reconstitution	Lyophilized from sterile PBS, pH 7.4. Normally 5 % - 8% trehalose is added as protectants before lyophilization. Please see Certificate of Analysis for specific instructions.
Storage & Shipping	Store at -20°C to -80°C for 12 months in lyophilized form. After reconstitution, if not intended for use within a month, aliquot and store at -80°C (Avoid repeated freezing and thawing). Lyophilized proteins are shipped at ambient temperature.
Background	This gene encodes a G protein-coupled receptor that is closely related to the glucagon receptor and binds to glucagon-like peptide-2 (GLP2). Signalling through GLP2 stimulates intestinal growth and increases villus height in the small intestine, concomitant with increased crypt cell proliferation and decreased enterocyte apoptosis. [provided by RefSeq, Dec 2014]
Usage	Research use only
Conjugate	Unconjugated



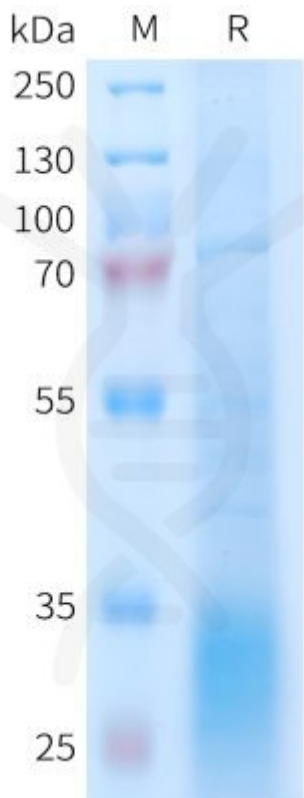


Figure 1. Human GLP2R Protein, His Tag on SDS-PAGE under reducing condition.

DIMABIO CONFIDENTIAL

