

## PRODUCT INFORMATION

|   |   |
|---|---|
| <b>Target</b>                           | GITR Ligand   |
| <b>Synonyms</b>                         | TNFSF18;AITRL;TL6;hGITRL;GITR Ligand  |
| <b>Description</b>                      | Recombinant human GITR Ligand protein with N-terminal mouse Fc and C-terminal 6×His tag   |
| <b>Delivery</b>                         | In Stock  |
| <b>Uniprot ID</b>                       | Q9UNG2  |
| <b>Expression Host</b>                  | HEK293  |
| <b>Tag</b>                              | N-Mouse Fc and C-6×His Tag  |
| <b>Molecular Characterization</b>       | mFc(Pro99-Lys330) GITR Ligand(Gln50-Ser177) 6×His   |
| <b>Molecular Weight</b>                 | The protein has a predicted molecular mass of 46-53 kDa after removal of the signal peptide.  |
| <b>Purity</b>                           | The purity of the protein is greater than 95% as determined by SDS-PAGE and Coomassie blue staining.  |
| <b>Formulation &amp; Reconstitution</b> | Lyophilized from sterile PBS, pH 7.4. Normally 5% - 8% trehalose is added as protectants before lyophilization. Please see Certificate of Analysis for specific instructions of reconstitution.   |
| <b>Storage &amp; Shipping</b>           | Store at -20°C to -80°C for 12 months in lyophilized form. After reconstitution, if not intended for use within a month, aliquot and store at -80°C (Avoid repeated freezing and thawing). Lyophilized proteins are shipped at ambient temperature.   |
| <b>Background</b>                       | The protein encoded by this gene is a cytokine that belongs to the tumor necrosis factor (TNF) ligand family. This cytokine is a ligand for receptor TNFRSF18/AITR/GITR. It has been shown to modulate T lymphocyte survival in peripheral tissues. This cytokine is also found to be expressed in endothelial cells, and is thought to be important for interaction between T lymphocytes and endothelial cells. |
| <b>Usage</b>                            | Research use only   |
| <b>Conjugate</b>                        | Unconjugated  |



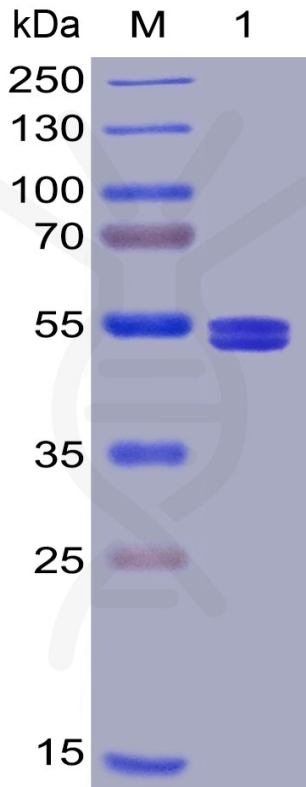


Figure 1. Human GITR Ligand Protein, mFc-His Tag on SDS-PAGE under reducing condition.

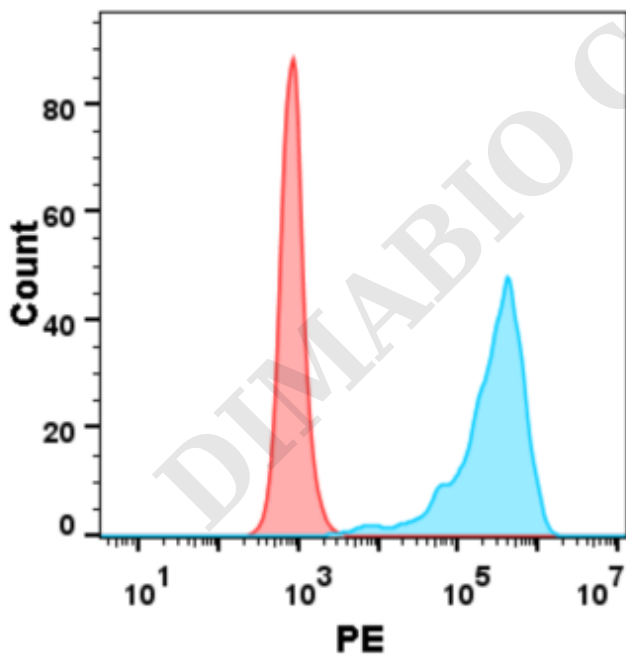


Figure 2. Flow cytometry analysis with 1  $\mu\text{g}/\text{mL}$  Human GITRL Protein, mFc-His tag (PME100020) on Expi293 cells transfected with human GITR (Blue histogram) or Expi293 transfected with irrelevant protein (Red histogram).

