

**PRODUCT INFORMATION**

<b>Target</b>	G-CSF
<b>Synonyms</b>	Granulocyte Colony-Stimulating Factor;G-CSF;Pluripoietin;Filgrastim;Lenograstim;CSF3;C17orf33;GCSF
<b>Description</b>	Recombinant Human Granulocyte Colony-Stimulating Factor is produced by our E.coli expression system and the target gene encoding Thr31-Pro204 is expressed.
<b>Delivery</b>	In Stock
<b>Uniprot ID</b>	P09919
<b>Expression Host</b>	E.coli
<b>Tag</b>	
<b>Molecular Characterization</b>	Not available
<b>Molecular Weight</b>	18.8 KDa
<b>Purity</b>	Greater than 95% as determined by reducing SDS-PAGE.
<b>Formulation &amp; Reconstitution</b>	Lyophilized from a 0.2 µm filtered solution of 10mM HAC-NaAc, 150mM NaCl, 0.004% Tween 80, 5% Mannitol, pH 4.0.
<b>Storage &amp; Shipping</b>	Store at -20°C to -80°C for 12 months in lyophilized form. After reconstitution, if not intended for use within a month, aliquot and store at -80°C (Avoid repeated freezing and thawing). Lyophilized proteins are shipped at ambient temperature.
<b>Background</b>	Human Granulocyte-Colony-Stimulating Factor (G-CSF) is 20 kD glycoprotein containing internal disulfide bonds. It induces the survival, proliferation, and differentiation of neutrophilic granulocyte precursor cells and it functionally activates mature blood neutrophils. Among the family of colony-stimulating factors, G-CSF is the most potent inducer of terminal differentiation to granulocytes and macrophages of leukemic myeloid cell lines. The synthesis of G-CSF can be induced by bacterial endotoxins, TNF, Interleukin-1, and GM-CSF. Prostaglandin E2 inhibits the synthesis of G-CSF. In epithelial, endothelial, and fibroblastic cells secretion of G-CSF is induced by Interleukin-17.
<b>Usage</b>	Research use only
<b>Conjugate</b>	Unconjugated



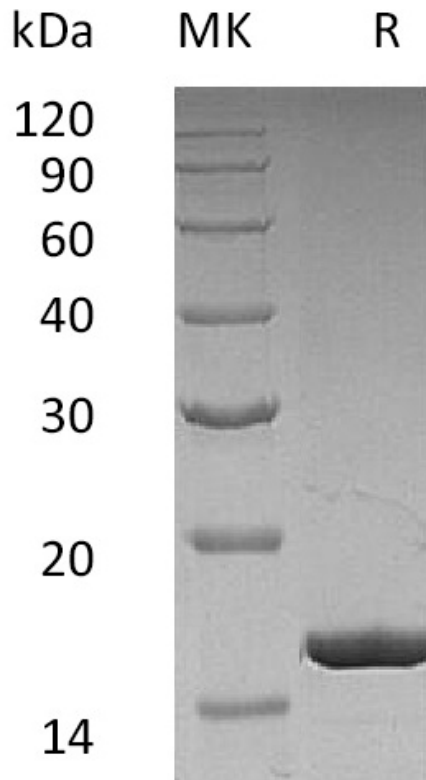


Figure 1. Greater than 95% as determined by reducing SDS-PAGE.

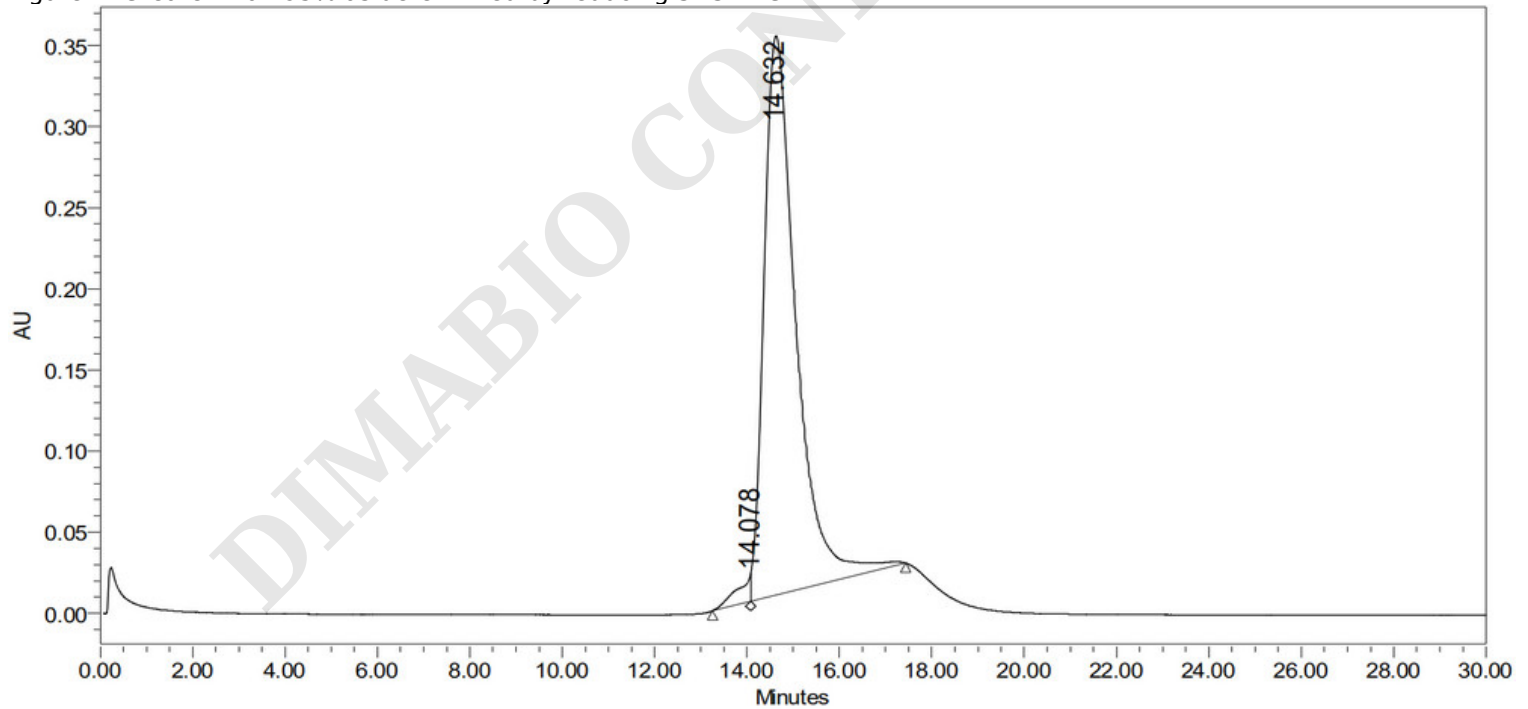


Figure 2. Greater than 95% as determined by SEC-HPLC. (QC verified)



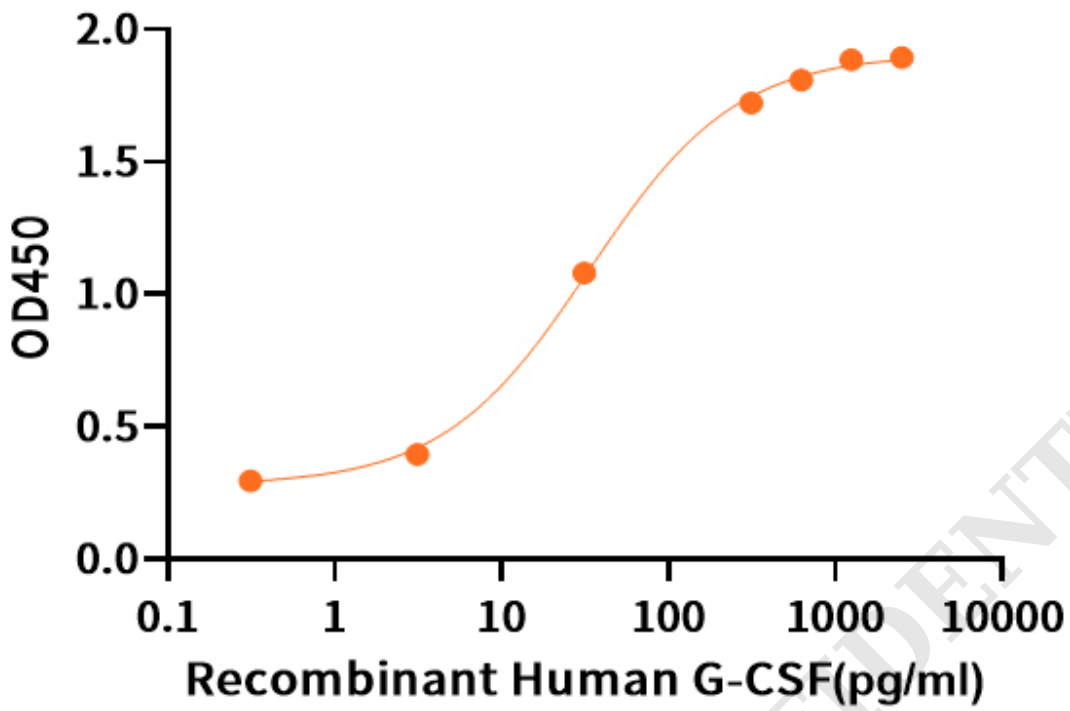


Figure 3. Measured in a cell proliferation assay using NFS-60 mouse myelogenous leukemia lymphoblast cells. The ED50 for this effect is 0.03 ng/ml.

DIMABIO CONFIDENTIAL

