

## PRODUCT INFORMATION

<b>Target</b>	FGL1
<b>Synonyms</b>	HFREP1;HP-041;HPS;LFIRE-1;LFIRE1
<b>Description</b>	Recombinant Human FGL1 Protein with N-terminal human Fc tag
<b>Delivery</b>	In Stock
<b>Uniprot ID</b>	Q08830
<b>Expression Host</b>	HEK293
<b>Tag</b>	N-Human Fc Tag
<b>Molecular Characterization</b>	hFc(Glu99-Ala330) FGL1(Leu23-Ile312)
<b>Molecular Weight</b>	The protein has a predicted molecular mass of 60.1 kDa after removal of the signal peptide. The apparent molecular mass of hFc-FGL1 is approximately 55-70 kDa due to glycosylation.
<b>Purity</b>	The purity of the protein is greater than 95% as determined by SDS-PAGE and Coomassie blue staining.
<b>Formulation &amp; Reconstitution</b>	Lyophilized from sterile PBS, pH 7.4. Normally 5% - 8% trehalose is added as protectants before lyophilization. Please see Certificate of Analysis for specific instructions of reconstitution.
<b>Storage &amp; Shipping</b>	Store at -20°C to -80°C for 12 months in lyophilized form. After reconstitution, if not intended for use within a month, aliquot and store at -80°C (Avoid repeated freezing and thawing). Lyophilized proteins are shipped at ambient temperature.
<b>Background</b>	Fibrinogen-like 1 is a member of the fibrinogen family. This protein is homologous to the carboxy terminus of the fibrinogen beta- and gamma-subunits which contains the four conserved cysteines of fibrinogens and fibrinogen related proteins. However, this protein lacks the platelet-binding site, cross-linking region and a thrombin-sensitive site which are necessary for fibrin clot formation. This protein may play a role in the development of hepatocellular carcinomas. Four alternatively spliced transcript variants encoding the same protein exist for this gene. [provided by RefSeq, Jul 2008]
<b>Usage</b>	Research use only



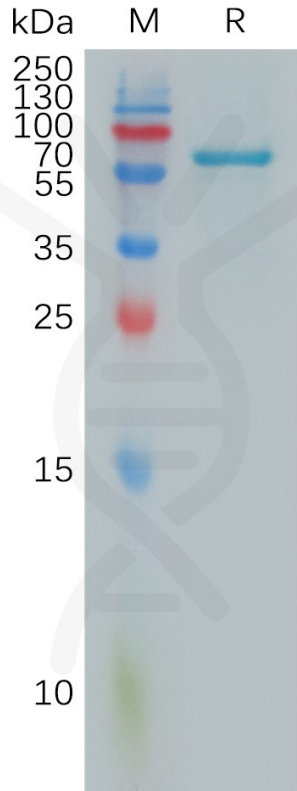


Figure 1. Human FGL1 Protein, hFc Tag on SDS-PAGE under reducing condition.

DIMABIO CONFIDENTIAL

