

PRODUCT INFORMATION

Target	FGF-10
Synonyms	Fibroblast growth factor 10;GF-10;eratinocyte growth factor 2;GF10;GF-2;GF2
Description	Recombinant Human Fibroblast Growth Factor 10 is produced by our E.coli expression system and the target gene encoding Gln38-Ser208 is expressed.
Delivery	In Stock
Uniprot ID	O15520
Expression Host	E.coli
Tag	
Molecular Characterization	Not available
Molecular Weight	19.5 KDa
Purity	Greater than 95% as determined by reducing SDS-PAGE.
Formulation & Reconstitution	Lyophilized from a 0.2 µm filtered solution of 20mM Tris-HCl, 200mM NaCl, pH 8.0.
Storage & Shipping	Store at -20°C to -80°C for 12 months in lyophilized form. After reconstitution, if not intended for use within a month, aliquot and store at -80°C (Avoid repeated freezing and thawing). Lyophilized proteins are shipped at ambient temperature.
Background	Fibroblast growth factor 10 (FGF-10, KGF-2), is a member of the fibroblast growth factor (FGF) family that includes FGF-3, -7, and -22. KGF-2 is secreted by mesenchymal cells and associates with extracellular FGF-BP. It preferentially binds and activates epithelial cell FGFR2 and interacts more weakly with FGFR1. It plays an important role in the regulation of embryonic development, cell proliferation and cell differentiation. It exhibits mitogenic activity for keratinizing epidermal cells, but essentially no activity for fibroblasts, which is similar to the biological activity of FGF7. FGF10 is required for normal branching morphogenesis. Defects in FGF10 are the cause of autosomal dominant aplasia of lacrimal and salivary glands (ALSG). ALSG has variable expressivity, and affected individuals may have aplasia or hypoplasia of the lacrimal, parotid, submandibular and sublingual glands and absence of the lacrimal puncta. The disorder is characterized by irritable eyes, recurrent eye infections, epiphora (constant tearing) and xerostomia (dryness of the mouth), which increases the risk of dental erosion, dental caries, periodontal disease and oral infections.
Usage	Research use only



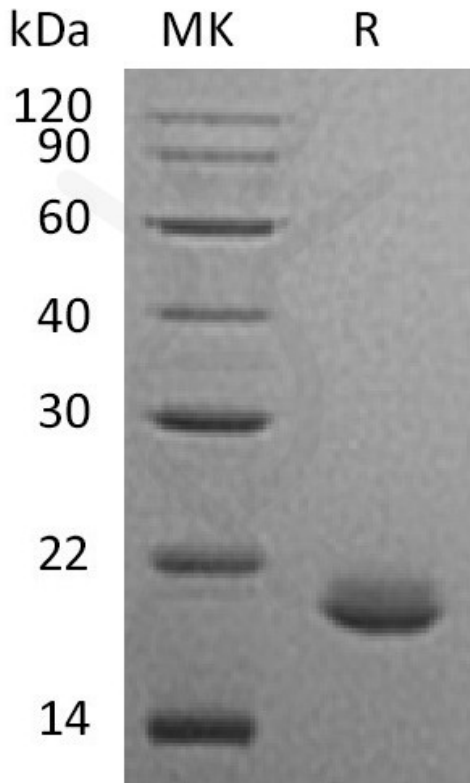


Figure 1. Greater than 95% as determined by reducing SDS-PAGE.

DIMABIO CONFIDENTIAL

