

PRODUCT INFORMATION

Tag	C-Flag Tag
Target	F2RL1
Synonyms	GPR11; PAR2
Description	Human F2RL1 full length protein-synthetic nanodisc
Delivery	In Stock
Uniprot ID	P55085
Expression Host	HEK293
Protein Families	Druggable Genome, GPCR, Transmembrane
Protein Pathways	Neuroactive ligand-receptor interaction
Molecular Weight	The human full length F2RL1 protein has a MW of 44.1 kDa
Formulation & Reconstitution	Lyophilized from nanodisc solubilization buffer (20 mM Tris-HCl, 150 mM NaCl, pH 8.0). Normally 5% - 8% trehalose is added as protectants before lyophilization. Please see Certificate of Analysis for
Storage & Shipping	Store at -20°C to -80°C for 12 months in lyophilized form. After reconstitution, if not intended for use within a month, aliquot and store at -80°C (Avoid repeated freezing and thawing). Lyophilized proteins are shipped at ambient temperature.
Background	A member of the G-protein coupled receptor 1 family of proteins. The encoded cell surface receptor is activated through proteolytic cleavage of its extracellular amino terminus, resulting in a new amino terminus that acts as a tethered ligand that binds to an extracellular loop domain. Activation of the receptor has been shown to stimulate vascular smooth muscle relaxation, dilate blood vessels, increase blood flow, and lower blood pressure. This protein is also important in the inflammatory response, as well as innate and adaptive immunity.
Usage	Research use only
Conjugate	Unconjugated



ELISA assay to evaluate F2RL1-Nanodisc
0.2 μ g Human F2RL1-Nanodisc per well

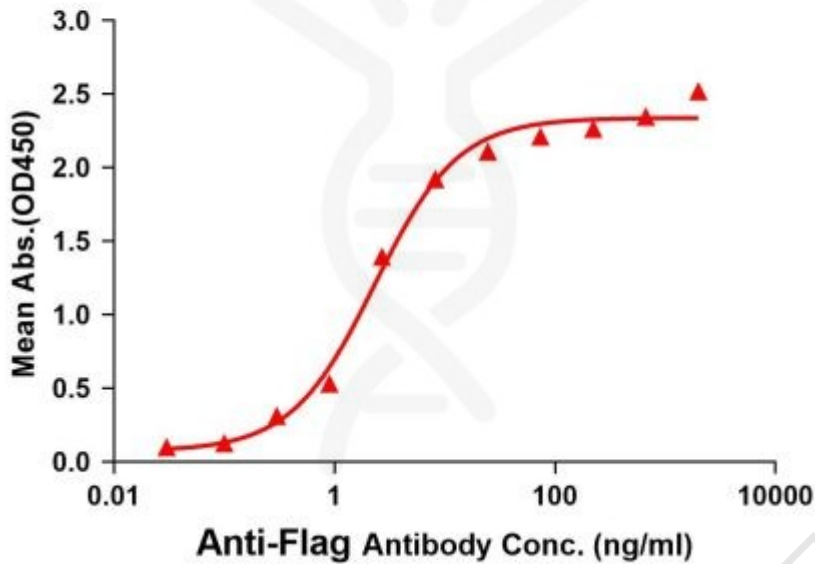


Figure1. Elisa plates were pre-coated with Flag Tag F2RL1-Nanodisc (0.2 μ g/per well). Serial diluted anti-Flag monoclonal antibody solutions were added, washed, and incubated with secondary antibody before Elisa reading. From above data, the EC50 for anti-Flag monoclonal antibody binding with F2RL1-Nanodisc is 2.32ng/ml.

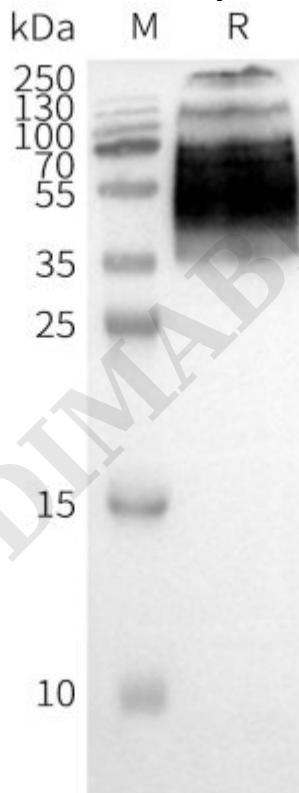


Figure2. WB analysis of Human F2RL1-Nanodisc with anti-Flag monoclonal antibody at 1/5000 dilution, followed by Goat Anti-Rabbit IgG HRP at 1/5000 dilution

