

PRODUCT INFORMATION

Target	EPCAM
Synonyms	EPCAM;TACSTD1;TROP1;CD326;DIAR5;EGP2;EGP314;EGP40;ESA;GA733-2;HNPCC8;HNPCC-8;KS1/4;KSA;M4S1;MIC18;MK1
Description	Recombinant human EPCAM protein with C-terminal 6xHis tag
Delivery	In Stock
Uniprot ID	P16422
Expression Host	HEK293
Tag	C-6xHis Tag
Molecular Characterization	EPCAM(Gln24-Lys265) 6xHis tag
Molecular Weight	The protein has a predicted molecular mass of 28.2 kDa after removal of the signal peptide.
Purity	The purity of the protein is greater than 95% as determined by SDS-PAGE and Coomassie blue staining.
Formulation & Reconstitution	Lyophilized from sterile PBS, pH 7.4. Normally 5% - 8% trehalose is added as protectants before lyophilization. Please see Certificate of Analysis for specific instructions of reconstitution.
Storage & Shipping	Store at -20°C to -80°C for 12 months in lyophilized form. After reconstitution, if not intended for use within a month, aliquot and store at -80°C (Avoid repeated freezing and thawing). Lyophilized proteins are shipped at ambient temperature.
Background	This gene encodes a carcinoma-associated antigen and is a member of a family that includes at least two type I membrane proteins. This antigen is expressed on most normal epithelial cells and gastrointestinal carcinomas and functions as a homotypic calcium-independent cell adhesion molecule. The antigen is being used as a target for immunotherapy treatment of human carcinomas. Mutations in this gene result in congenital tufting enteropathy.
Usage	Research use only
Conjugate	Unconjugated

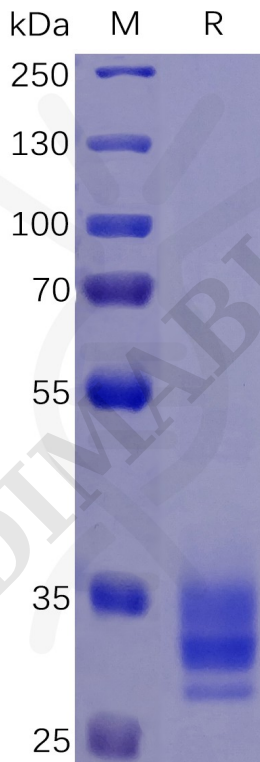


Figure 1. Human EPCAM Protein, His Tag on SDS-PAGE under reducing condition.



Human EPCAM, His Tagged protein ELISA

0.2 μ g of EPCAM, His tagged protein per well

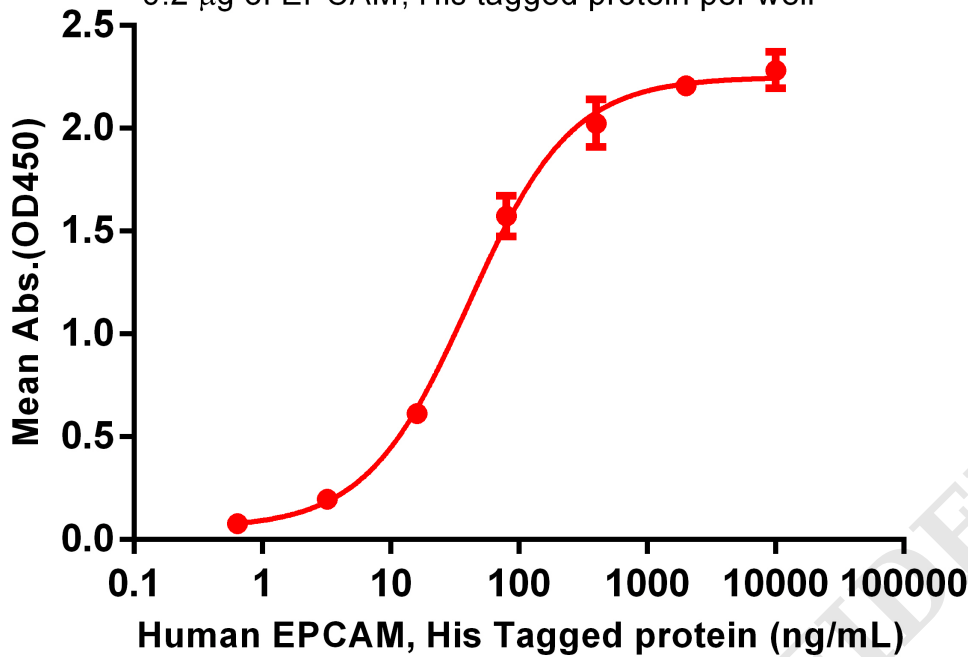


Figure 2. ELISA plate pre-coated by 2 μ g/mL (100 μ L/well) Human EPCAM Protein, His Tag (PME100068) can bind Anti-EPCAM antibody(DM147), Rabbit mAb in a linear range of 3.20-16 ng/mL.

Human EPCAM, His Tagged protein ELISA

0.2 μ g of Human EPCAM, His tagged protein per well

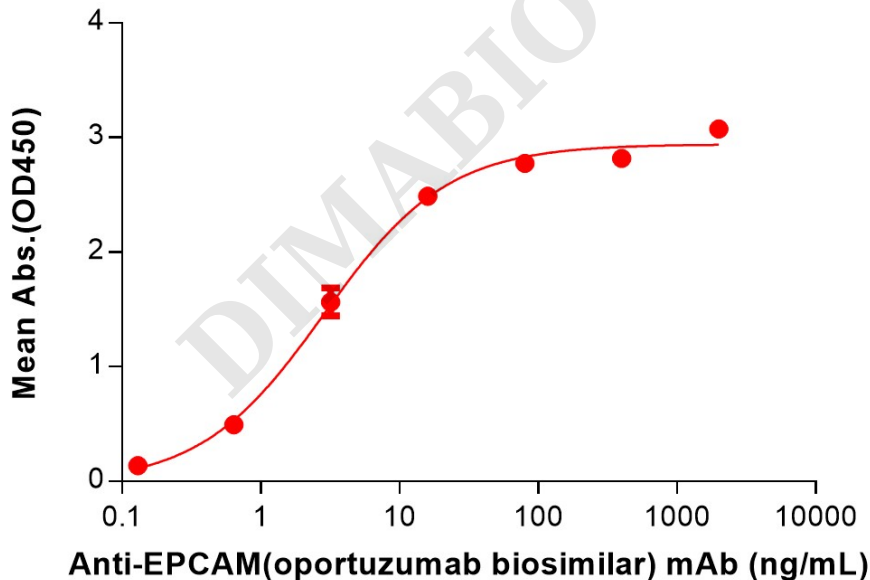


Figure 3. ELISA plate pre-coated by 2 μ g/mL (100 μ L/well) Human EPCAM Protein, His Tag (PME100068) can bind Anti-EPCAM(oportuzumab biosimilar) mAb (BME100184) in a linear range of 0.64-16 ng/mL.

