

PRODUCT INFORMATION

Target	ENPP2
Synonyms	ATX;NPP2;ATX-X;PDNP2;LysoPLD;AUTOTAXIN;PD-IALPHA
Description	Recombinant Human ENPP2 Protein with N-terminal 6×His tag
Delivery	In Stock
Uniprot ID	Q13822
Expression Host	HEK293
Tag	N-6×His Tag
Molecular Characterization	6×His tag ENPP2(Asp49-Ile863)
Molecular Weight	The protein has a predicted molecular mass of 94.5 kDa after removal of the signal peptide. The apparent molecular mass of His-ENPP2 is approximately 100-130 kDa due to glycosylation.
Purity	The purity of the protein is greater than 85% as determined by SDS-PAGE and Coomassie blue staining.
Formulation & Reconstitution	Lyophilized from sterile PBS, pH 7.4. Normally 5% - 8% trehalose is added as protectants before lyophilization. Please see Certificate of Analysis for specific instructions of reconstitution.
Storage & Shipping	Store at -20°C to -80°C for 12 months in lyophilized form. After reconstitution, if not intended for use within a month, aliquot and store at -80°C (Avoid repeated freezing and thawing). Lyophilized proteins are shipped at ambient temperature.
Background	The protein encoded by this gene functions as both a phosphodiesterase, which cleaves phosphodiester bonds at the 5' end of oligonucleotides, and a phospholipase, which catalyzes production of lysophosphatidic acid (LPA) in extracellular fluids. LPA evokes growth factor-like responses including stimulation of cell proliferation and chemotaxis. This gene product stimulates the motility of tumor cells and has angiogenic properties, and its expression is upregulated in several kinds of carcinomas. The gene product is secreted and further processed to make the biologically active form. Several alternatively spliced transcript variants encoding different isoforms have been identified. [provided by RefSeq, Aug 2008]
Usage	Research use only
Conjugate	Unconjugated



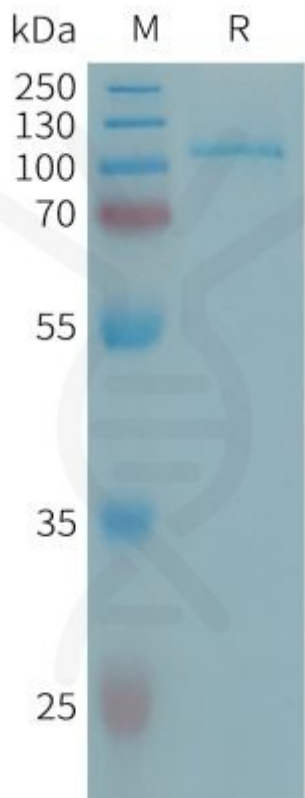


Figure 1. Human ENPP2 Protein, His Tag on SDS-PAGE under reducing condition.

DIMABIO CONFIDENTIAL

