

PRODUCT INFORMATION

Target	DKK1
Synonyms	DKK-1;SK
Description	Recombinant human DKK1 Protein with C-terminal human Fc tag
Delivery	In Stock
Uniprot ID	O94907
Expression Host	HEK293
Tag	C-Human Fc Tag
Molecular Characterization	DKK1(Thr32-His266) hFc(Glu99-Ala330)
Molecular Weight	The protein has a predicted molecular mass of 51.9 kDa after removal of the signal peptide. The apparent molecular mass of DKK1-hFc is approximately 70 kDa due to glycosylation.
Purity	The purity of the protein is greater than 90% as determined by SDS-PAGE and Coomassie blue staining.
Formulation & Reconstitution	Lyophilized from sterile PBS, pH 7.4. Normally 5% - 8% trehalose is added as protectants before lyophilization. Please see Certificate of Analysis for specific instructions of reconstitution.
Storage & Shipping	Store at -20°C to -80°C for 12 months in lyophilized form. After reconstitution, if not intended for use within a month, aliquot and store at -80°C (Avoid repeated freezing and thawing). Lyophilized proteins are shipped at ambient temperature.
Background	This gene encodes a member of the dickkopf family of proteins. Members of this family are secreted proteins characterized by two cysteine-rich domains that mediate protein-protein interactions. The encoded protein binds to the LRP6 co-receptor and inhibits beta-catenin-dependent Wnt signaling. This gene plays a role in embryonic development and may be important in bone formation in adults. Elevated expression of this gene has been observed in numerous human cancers and this protein may promote proliferation, invasion and growth in cancer cell lines.
Usage	Research use only



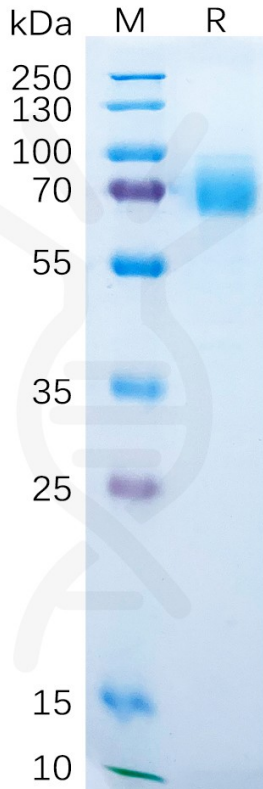


Figure 1. Human DKK1 Protein, hFc Tag on SDS-PAGE under reducing condition.

Human DKK1, hFc Tagged protein ELISA

0.2 μ g of Human LRP6, His tagged protein per well

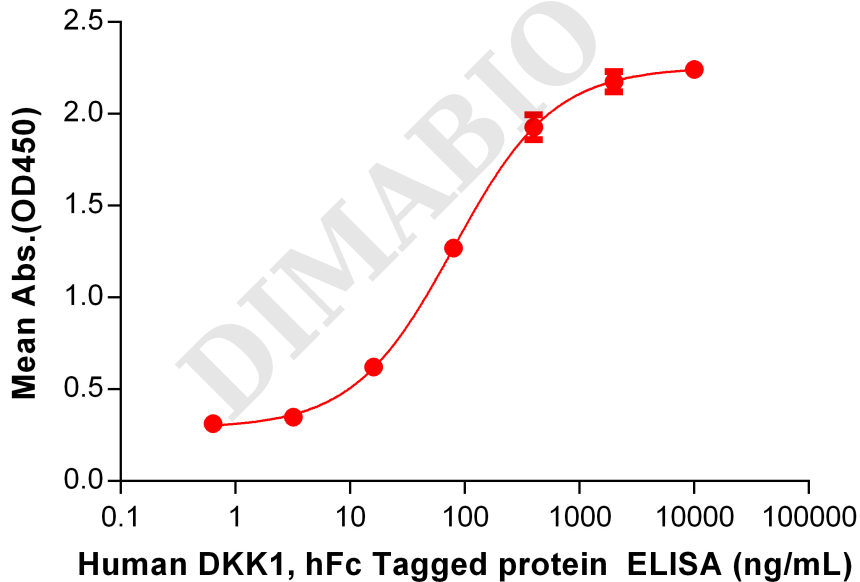


Figure 2. ELISA plate pre-coated by 5 μ g/mL (100 μ L/well) Human LRP6 Protein, His Tag (PME101193) can bind Human DKK1 Protein, hFc Tag (PME100230) in a linear range of 16-400ng/mL.



Human DKK1, hFc Tagged protein ELISA

0.2 μ g of Human LRP5(644-1263), His tagged protein per well

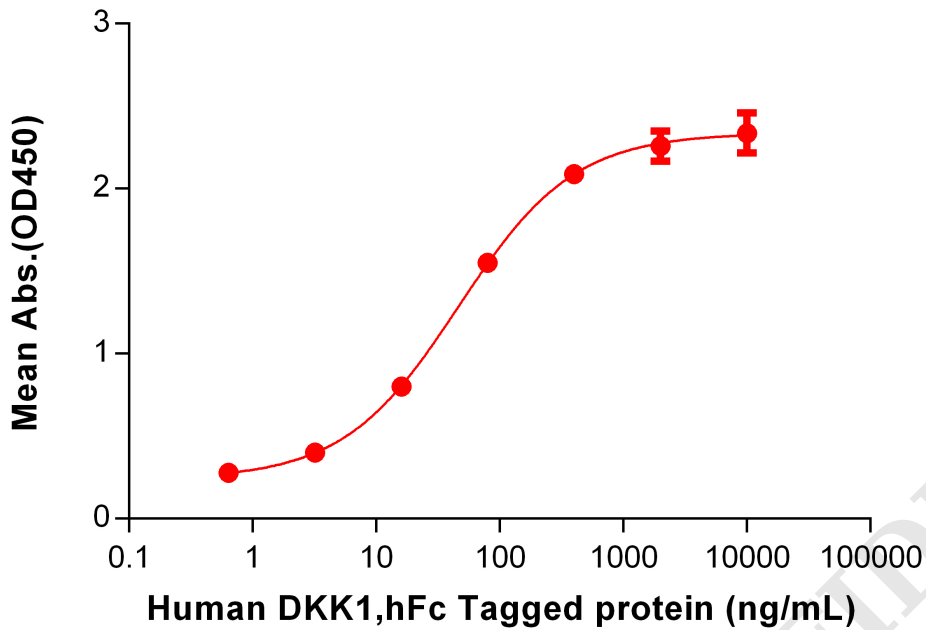


Figure 3. ELISA plate pre-coated by 5 μ g/mL (100 μ L/well) Human LRP5(644-1263)Protein, His Tag can bind Human DKK1 Protein, hFc Tag(PME100230) in a linear range of 16-400ng/mL.

