

PRODUCT INFORMATION

Target	CTSD
Synonyms	CPSD; CLN10; HEL-S-130P
Description	Recombinant human CTSD Protein with C-terminal 10×His tag
Delivery	In Stock
Uniprot ID	P07339
Expression Host	HEK293
Tag	C-10×His tag
Molecular Characterization	CTSD(Leu21-Leu412) 10×His tag
Molecular Weight	The protein has a predicted molecular mass of 44.0 kDa after removal of the signal peptide. The apparent molecular mass of CTSD-His is approximately 35-55 kDa due to glycosylation.
Purity	The purity of the protein is greater than 95% as determined by SDS-PAGE and Coomassie blue staining.
Formulation & Reconstitution	Lyophilized from sterile PBS, pH 7.4. Normally 5% - 8% trehalose is added as protectants before lyophilization. Please see Certificate of Analysis for specific instructions of reconstitution.
Storage & Shipping	Store at -20°C to -80°C for 12 months in lyophilized form. After reconstitution, if not intended for use within a month, aliquot and store at -80°C (Avoid repeated freezing and thawing). Lyophilized proteins are shipped at ambient temperature.
Background	This gene encodes a member of the A1 family of peptidases. The encoded preproprotein is proteolytically processed to generate multiple protein products. These products include the cathepsin D light and heavy chains, which heterodimerize to form the mature enzyme. This enzyme exhibits pepsin-like activity and plays a role in protein turnover and in the proteolytic activation of hormones and growth factors. Mutations in this gene play a causal role in neuronal ceroid lipofuscinosis-10 and may be involved in the pathogenesis of several other diseases, including breast cancer and possibly Alzheimer's disease. [provided by RefSeq, Nov 2015]
Usage	Research use only
Conjugate	Unconjugated



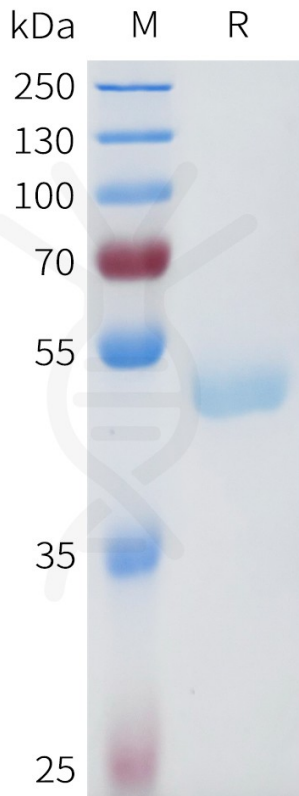


Figure 1. Human CTSD Protein, His Tag on SDS-PAGE under reducing condition.

DIMABIO CONFIDENTIAL

