

**PRODUCT INFORMATION**

|   |   |
|---|---|
| <b>Target</b>                           | CPM   |
| <b>Synonyms</b>                         | CBPM  |
| <b>Description</b>                      | Recombinant Human CPM Protein with C-terminal 6×His tag   |
| <b>Delivery</b>                         | In Stock  |
| <b>Uniprot ID</b>                       | P14384  |
| <b>Expression Host</b>                  | HEK293  |
| <b>Tag</b>                              | C-6×His Tag   |
| <b>Molecular Characterization</b>       | CPM(Leu18-His422) 6×His tag   |
| <b>Molecular Weight</b>                 | The protein has a predicted molecular mass of 47.1 kDa after removal of the signal peptide. The apparent molecular mass of CPM-His is approximately 35-55 kDa due to glycosylation.   |
| <b>Purity</b>                           | The purity of the protein is greater than 85% as determined by SDS-PAGE and Coomassie blue staining.  |
| <b>Formulation &amp; Reconstitution</b> | Lyophilized from sterile PBS, pH 7.4. Normally 5 % - 8% trehalose is added as protectants before lyophilization. Please see Certificate of Analysis for specific instructions of reconstitution.  |
| <b>Storage &amp; Shipping</b>           | Store at -20°C to -80°C for 12 months in lyophilized form. After reconstitution, if not intended for use within a month, aliquot and store at -80°C (Avoid repeated freezing and thawing). Lyophilized proteins are shipped at ambient temperature.   |
| <b>Background</b>                       | The protein encoded by this gene is a membrane-bound arginine/lysine carboxypeptidase. Its expression is associated with monocyte to macrophage differentiation. This encoded protein contains hydrophobic regions at the amino and carboxy termini and has 6 potential asparagine-linked glycosylation sites. The active site residues of carboxypeptidases A and B are conserved in this protein. Three alternatively spliced transcript variants encoding the same protein have been described for this gene. [provided by RefSeq, Jul 2008] |
| <b>Usage</b>                            | Research use only   |
| <b>Conjugate</b>                        | Unconjugated  |



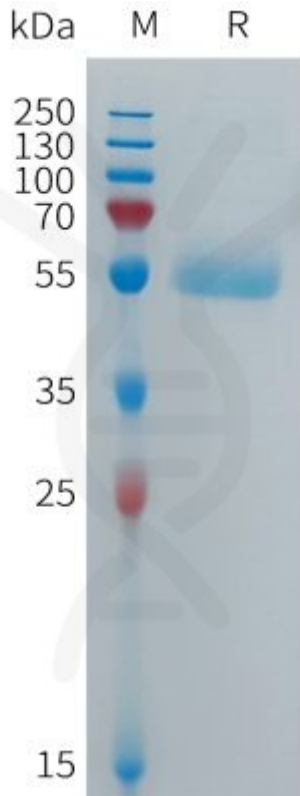


Figure 1. Human CPM Protein, His Tag on SDS-PAGE under reducing condition.

DIMABIO CONFIDENTIAL

