

## PRODUCT INFORMATION

<b>Target</b>	CGRP
<b>Synonyms</b>	CALC1;CALCA;CGRP-alpha;CGRP-I;CGRP1;CT;KC;PCT
<b>Description</b>	Recombinant Human CGRP Protein with C-terminal human Fc tag
<b>Delivery</b>	In Stock
<b>Uniprot ID</b>	P06881
<b>Expression Host</b>	HEK293
<b>Tag</b>	C-Human Fc Tag
<b>Molecular Characterization</b>	CGRP(Ala83-Phe119) hFc(Glu99-Ala330)
<b>Molecular Weight</b>	The protein has a predicted molecular mass of 29.9 kDa after removal of the signal peptide. The apparent molecular mass of CGRP-hFc is approximately 25-35 kDa due to glycosylation.
<b>Purity</b>	The purity of the protein is greater than 95% as determined by SDS-PAGE and Coomassie blue staining.
<b>Formulation &amp; Reconstitution</b>	Lyophilized from sterile PBS, pH 7.4. Normally 5% - 8% trehalose is added as protectants before lyophilization. Please see Certificate of Analysis for specific instructions of reconstitution.
<b>Storage &amp; Shipping</b>	Store at -20°C to -80°C for 12 months in lyophilized form. After reconstitution, if not intended for use within a month, aliquot and store at -80°C (Avoid repeated freezing and thawing). Lyophilized proteins are shipped at ambient temperature.
<b>Background</b>	This gene encodes the peptide hormones calcitonin, calcitonin gene-related peptide and katacalcin by tissue-specific alternative RNA splicing of the gene transcripts and cleavage of inactive precursor proteins. Calcitonin is involved in calcium regulation and acts to regulate phosphorus metabolism. Calcitonin gene-related peptide functions as a vasodilator and as an antimicrobial peptide while katacalcin is a calcium-lowering peptide. Multiple transcript variants encoding different isoforms have been found for this gene.[provided by RefSeq, Aug 2014]
<b>Usage</b>	Research use only



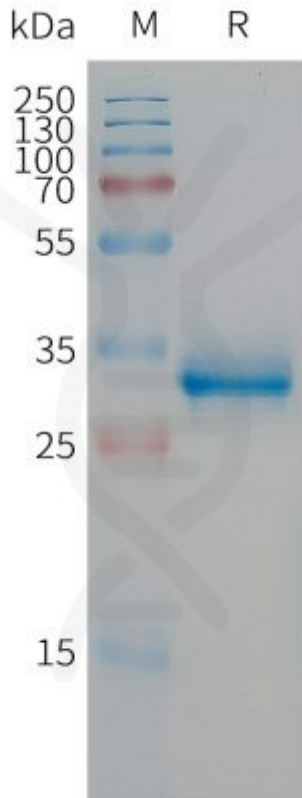


Figure 1. Human CGRP Protein, hFc Tag on SDS-PAGE under reducing condition.

DIMABIO CONFIDENTIAL

