

PRODUCT INFORMATION

Target	CFH
Synonyms	FH;HF;HF1;HF2;HUS;FHL1;AHUS1;AMBPI;ARMD4;ARMS1;CFHL3
Description	Recombinant human CFH Protein with C-terminal 10×His tag
Delivery	In Stock
Uniprot ID	P08603
Expression Host	HEK293
Tag	C-10×His Tag
Molecular Characterization	CFH(Glu19-Arg1231) 10×His tag
Molecular Weight	The protein has a predicted molecular mass of 138.4 kDa after removal of the signal peptide. The apparent molecular mass of CFH-His is approximately 130-250 kDa due to glycosylation.
Purity	The purity of the protein is greater than 85% as determined by SDS-PAGE and Coomassie blue staining.
Formulation & Reconstitution	Lyophilized from sterile PBS, pH 7.4. Normally 5% - 8% trehalose is added as protectants before lyophilization. Please see Certificate of Analysis for specific instructions of reconstitution.
Storage & Shipping	Store at -20°C to -80°C for 12 months in lyophilized form. After reconstitution, if not intended for use within a month, aliquot and store at -80°C (Avoid repeated freezing and thawing). Lyophilized proteins are shipped at ambient temperature.
Background	This gene is a member of the Regulator of Complement Activation (RCA) gene cluster and encodes a protein with twenty short consensus repeat (SCR) domains. This protein is secreted into the bloodstream and has an essential role in the regulation of complement activation, restricting this innate defense mechanism to microbial infections. Mutations in this gene have been associated with hemolytic-uremic syndrome (HUS) and chronic hypocomplementemic nephropathy. Alternate transcriptional splice variants, encoding different isoforms, have been characterized. [provided by RefSeq, Oct 2011]
Usage	Research use only
Conjugate	Unconjugated



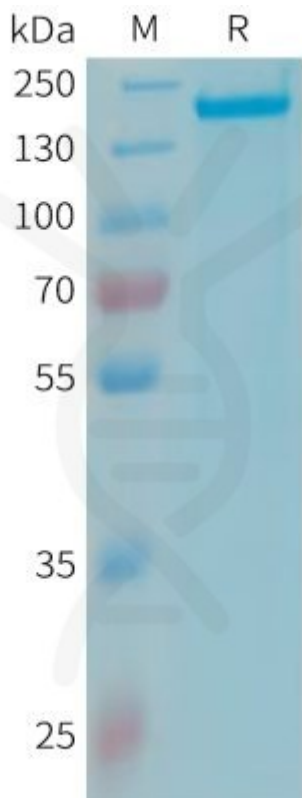


Figure 1. Human CFH Protein, His Tag on SDS-PAGE under reducing condition.

DIMABIO CONFIDENTIAL

