

PRODUCT INFORMATION

Target	CD46
Synonyms	CD46;AHUS2;MCP;MIC10;TLX;TRA2.10
Description	Recombinant human CD46 Protein with C-terminal 6×His tag
Delivery	In Stock
Uniprot ID	P15529
Expression Host	HEK293
Tag	C-6×His Tag
Molecular Characterization	CD46(Cys35-Tyr328) 6×His tag
Molecular Weight	The protein has a predicted molecular mass of 33.5 kDa after removal of the signal peptide. The apparent molecular mass of CD46-His is approximately 55-70 kDa due to glycosylation.
Purity	The purity of the protein is greater than 95% as determined by SDS-PAGE and Coomassie blue staining.
Formulation & Reconstitution	Lyophilized from sterile PBS, pH 7.4. Normally 5% - 8% trehalose is added as protectants before lyophilization. Please see Certificate of Analysis for specific instructions of reconstitution.
Storage & Shipping	Store at -20°C to -80°C for 12 months in lyophilized form. After reconstitution, if not intended for use within a month, aliquot and store at -80°C (Avoid repeated freezing and thawing). Lyophilized proteins are shipped at ambient temperature.
Background	The protein encoded by this gene is a type I membrane protein and is a regulatory part of the complement system. The encoded protein has cofactor activity for inactivation of complement components C3b and C4b by serum factor I, which protects the host cell from damage by complement. In addition, the encoded protein can act as a receptor for the Edmonston strain of measles virus, human herpesvirus-6, and type IV pili of pathogenic Neisseria. Finally, the protein encoded by this gene may be involved in the fusion of the spermatozoa with the oocyte during fertilization. Mutations at this locus have been associated with susceptibility to hemolytic uremic syndrome. Alternatively spliced transcript variants encoding different isoforms have been described.
Usage	Research use only
Conjugate	Unconjugated



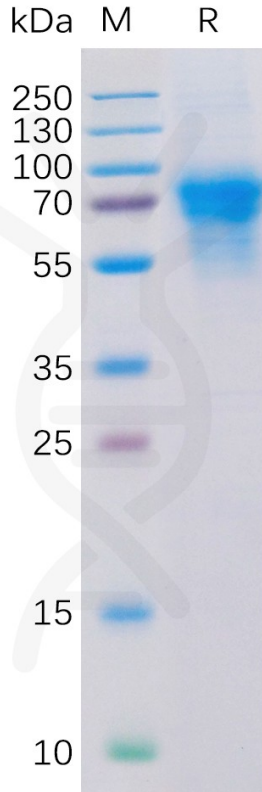


Figure 1. Human CD46 Protein, His Tag on SDS-PAGE under reducing condition.

Human CD46, His Tagged protein ELISA

0.2 µg of CD46, His tagged protein per well

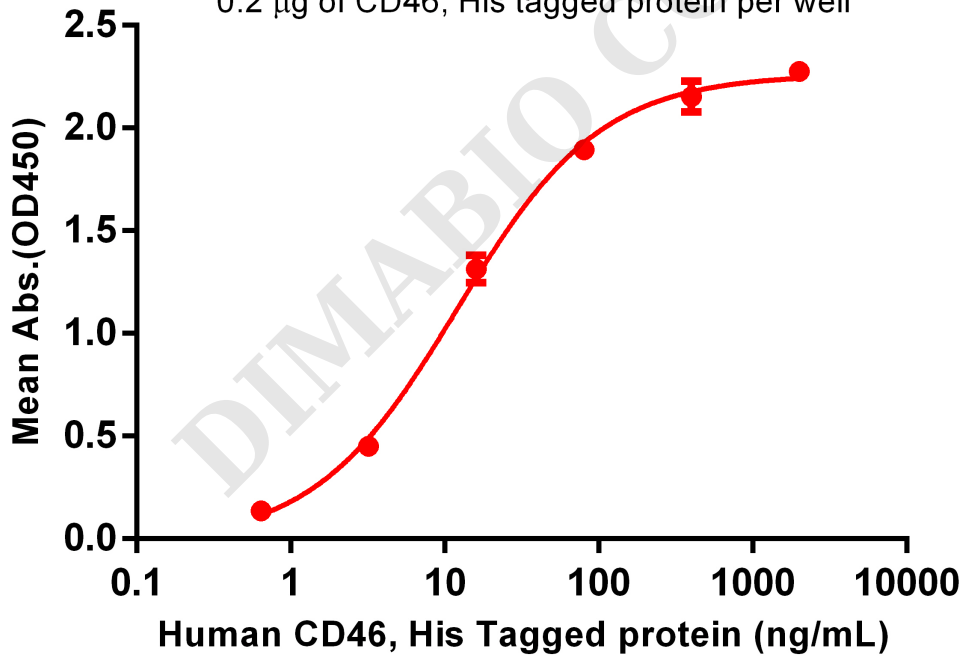


Figure 2. ELISA plate pre-coated by 2 µg/mL (100 µL/well) Human CD46 Protein, His Tag (PME100102) can bind Anti-CD46 antibody(DM145), Rabbit mAb in a linear range of 0.64-16 ng/mL.

