

PRODUCT INFORMATION

Target	CD300LG
Synonyms	CLM-9;CLM9;NEPMUCIN;TREM-4;TREM4
Description	Recombinant Human CD300LG Protein with C-terminal 6×His tag
Delivery	In Stock
Uniprot ID	Q6UXG3
Expression Host	HEK293
Tag	C-6×His Tag
Molecular Characterization	CD300LG(Leu19-Arg247) 6×His tag
Molecular Weight	The protein has a predicted molecular mass of 25.6 kDa after removal of the signal peptide. The apparent molecular mass of CD300LG-His is approximately 25-70 kDa due to glycosylation.
Purity	The purity of the protein is greater than 85% as determined by SDS-PAGE and Coomassie blue staining.
Formulation & Reconstitution	Lyophilized from sterile PBS, pH 7.4. Normally 5 % - 8% trehalose is added as protectants before lyophilization. Please see Certificate of Analysis for specific instructions of reconstitution.
Storage & Shipping	Store at -20°C to -80°C for 12 months in lyophilized form. After reconstitution, if not intended for use within a month, aliquot and store at -80°C (Avoid repeated freezing and thawing). Lyophilized proteins are shipped at ambient temperature.
Background	Members of the CD300 (see MIM 606786)-like (CD300L) family, such as CD300LG, are widely expressed on hematopoietic cells. All CD300L proteins are type I cell surface glycoproteins that contain a single immunoglobulin (Ig) V-like domain (Takatsu et al., 2006 [PubMed 16876123]).[supplied by OMIM, Mar 2008]
Usage	Research use only
Conjugate	Unconjugated



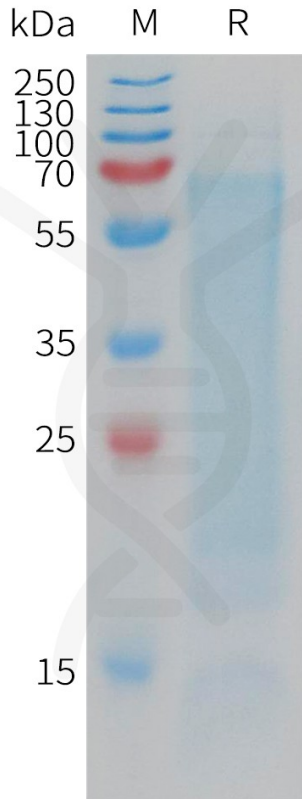


Figure 1. Human CD300LG Protein, His Tag on SDS-PAGE under reducing condition.

DIMABIO CONFIDENTIAL

