

**PRODUCT INFORMATION**

<b>Target</b>	CD27
<b>Synonyms</b>	CD27;TNFRSF7;S152;T14;Tp55
<b>Description</b>	Recombinant human CD27 protein with C-terminal human Fc tag
<b>Delivery</b>	In Stock
<b>Uniprot ID</b>	P26842
<b>Expression Host</b>	HEK293
<b>Tag</b>	C-Human Fc Tag
<b>Molecular Characterization</b>	CD27(Ala20-Arg191) hFc(Glu99-Ala330)
<b>Molecular Weight</b>	The protein has a predicted molecular mass of 45.3 kDa after removal of the signal peptide. The apparent molecular mass of CD27-hFc is approximately 55-70 kDa due to glycosylation.
<b>Purity</b>	The purity of the protein is greater than 95% as determined by SDS-PAGE and Coomassie blue staining.
<b>Formulation &amp; Reconstitution</b>	Lyophilized from sterile PBS, pH 7.4. Normally 5% - 8% trehalose is added as protectants before lyophilization. Please see Certificate of Analysis for specific instructions of reconstitution.
<b>Storage &amp; Shipping</b>	Store at -20°C to -80°C for 12 months in lyophilized form. After reconstitution, if not intended for use within a month, aliquot and store at -80°C (Avoid repeated freezing and thawing). Lyophilized proteins are shipped at ambient temperature.
<b>Background</b>	The protein encoded by this gene is a member of the TNF-receptor superfamily. This receptor is required for generation and long-term maintenance of T cell immunity. It binds to ligand CD70, and plays a key role in regulating B-cell activation and immunoglobulin synthesis. This receptor transduces signals that lead to the activation of NF-kappaB and MAPK8/JNK. Adaptor proteins TRAF2 and TRAF5 have been shown to mediate the signaling process of this receptor. CD27-binding protein (SIVA), a proapoptotic protein, can bind to this receptor and is thought to play an important role in the apoptosis induced by this receptor.
<b>Usage</b>	Research use only
<b>Conjugate</b>	Unconjugated



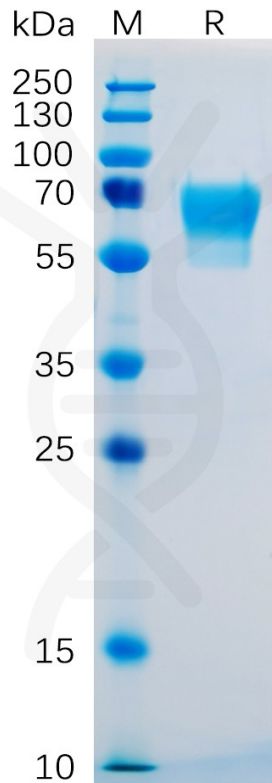


Figure 1. Human CD27 Protein, hFc Tag on SDS-PAGE under reducing condition.

## Human CD27, hFc Tagged protein ELISA

0.2  $\mu\text{g}$  of CD27, hFc Tagged protein per well

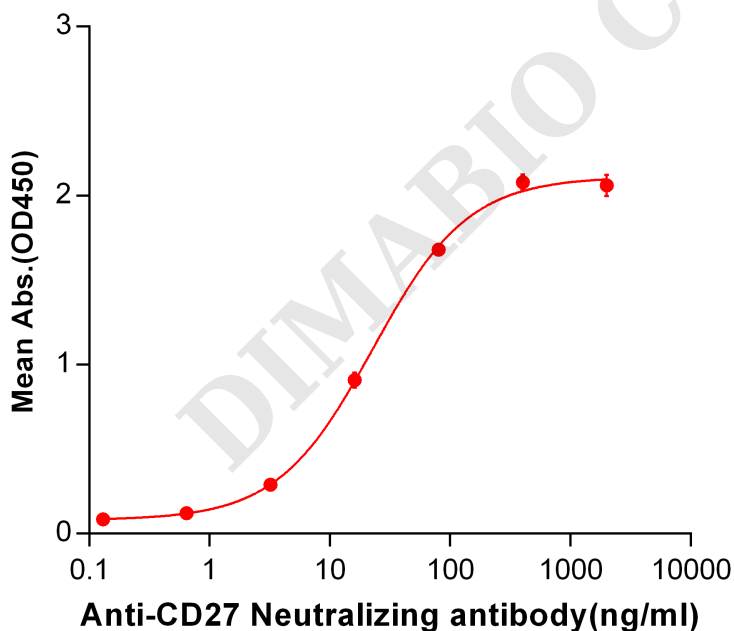


Figure 2. ELISA plate pre-coated by 2  $\mu\text{g}/\text{ml}$  (100  $\mu\text{l}/\text{well}$ ) Human CD27, hFc tagged protein (PME100475) can bind Anti-CD27 Neutralizing antibody BME100018 in a linear range of 3.2-80.0 ng/ml.



## Human CD27, hFc Tagged protein ELISA

0.2  $\mu$ g of CD27, hFc Tagged protein per well

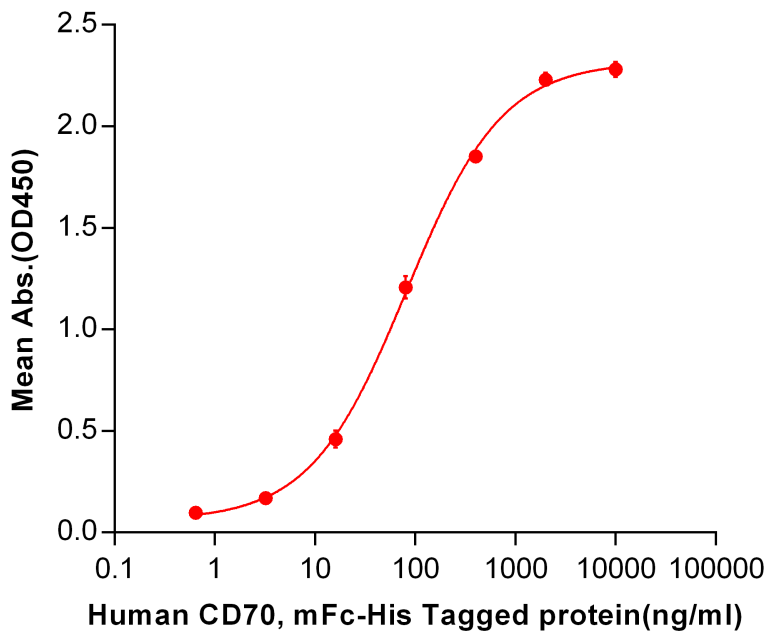


Figure 3. ELISA plate pre-coated by 2  $\mu$ g/ml (100  $\mu$ l/well) Human CD27, hFc tagged protein (PME100475) can bind Human CD70, mFc-His tagged protein PME100042 in a linear range of 3.2-400 ng/ml.

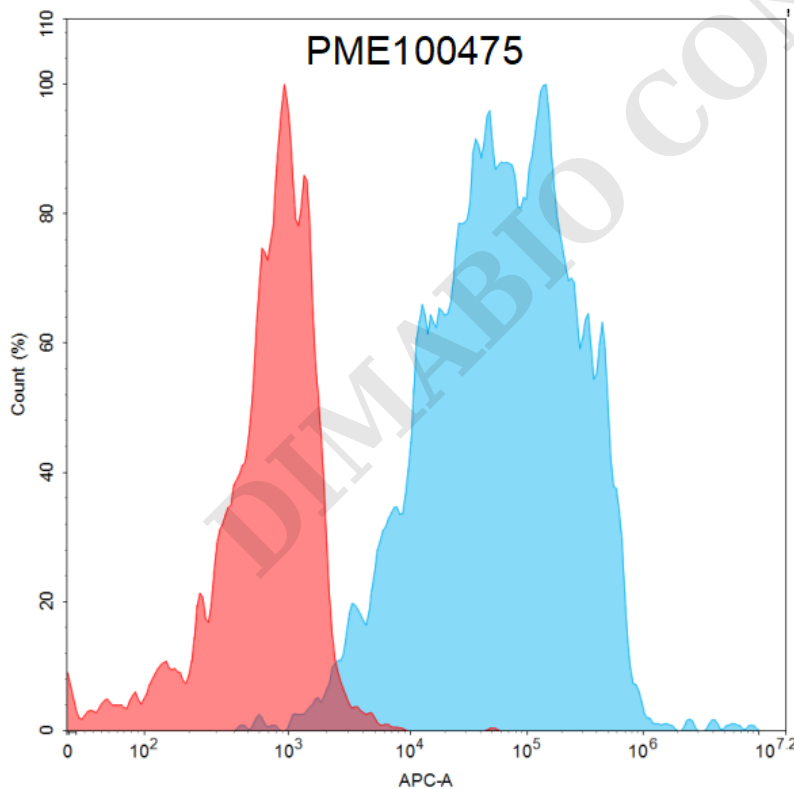


Figure 4. Flow cytometry analysis with 15  $\mu$ g/mL Human CD27 Protein, hFc tag (PME100475) on Expi293 cells transfected with human CD70 (Blue histogram) or Expi293 transfected with irrelevant protein (Red histogram).

