

PRODUCT INFORMATION

Target	SELPLG
Synonyms	PSGL-1;PSGL1;CD162;SELPLG;Selectin P ligand
Description	Recombinant Human CD162 protein with C-terminal 6×His tag
Delivery	In Stock
Uniprot ID	Q14242
Expression Host	HEK293
Tag	C-6×His Tag
Molecular Characterization	CD162(Leu18-Cys320) 6×His tag
Molecular Weight	The protein has a predicted molecular mass of 31.4 kDa after removal of the signal peptide. The apparent molecular mass of CD162-His is approximately 70-100 kDa due to glycosylation.
Purity	The purity of the protein is greater than 95% as determined by SDS-PAGE and Coomassie blue staining.
Formulation & Reconstitution	Lyophilized from sterile PBS, pH 7.4. Normally 5 % - 8% trehalose is added as protectants before lyophilization. Please see Certificate of Analysis for specific instructions of reconstitution.
Storage & Shipping	Store at -20°C to -80°C for 12 months in lyophilized form. After reconstitution, if not intended for use within a month, aliquot and store at -80°C (Avoid repeated freezing and thawing). Lyophilized proteins are shipped at ambient temperature.
Background	This gene encodes a glycoprotein that functions as a high affinity counter-receptor for the cell adhesion molecules P-, E- and L- selectin expressed on myeloid cells and stimulated T lymphocytes. As such, this protein plays a critical role in leukocyte trafficking during inflammation by tethering of leukocytes to activated platelets or endothelia expressing selectins. This protein requires two post-translational modifications, tyrosine sulfation and the addition of the sialyl Lewis x tetrasaccharide (sLex) to its O-linked glycans, for its high-affinity binding activity. Aberrant expression of this gene and polymorphisms in this gene are associated with defects in the innate and adaptive immune response. Alternate splicing results in multiple transcript variants.
Usage	Research use only
Conjugate	Unconjugated



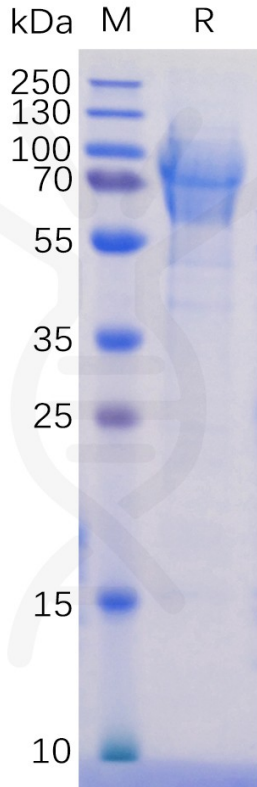


Figure 1. Human CD162 Protein, His Tag on SDS-PAGE under reducing condition.

Human CD162, His Tagged protein ELISA

0.2 μ g of Human CD162, His tagged protein per well

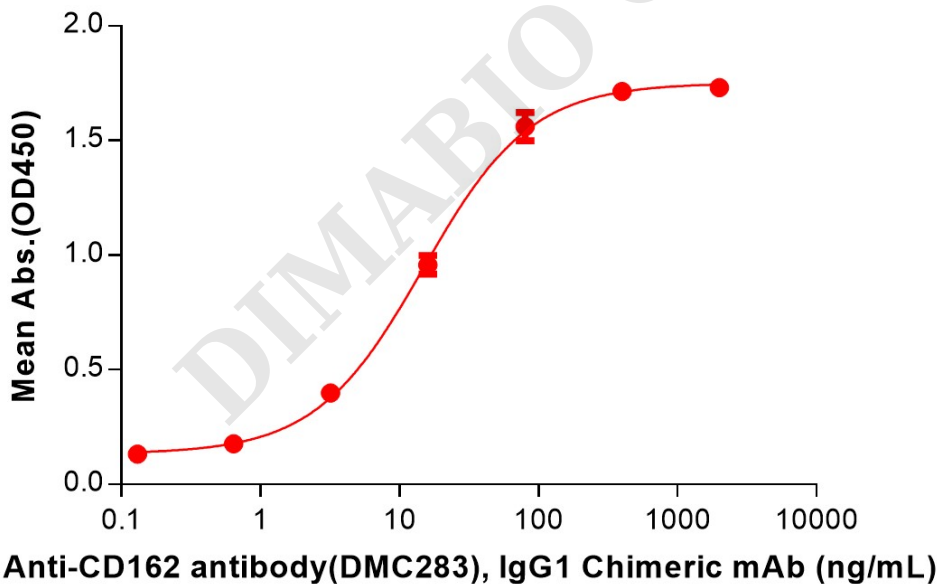


Figure 2. ELISA plate pre-coated by 2 μ g/mL (100 μ L/well) Human CD162 Protein, His Tag (PME100471) can bind Anti-CD162 antibody (DMC283), IgG1 Chimeric mAb (DMC100283) in a linear range of 3.20-80 ng/mL.

