

**PRODUCT INFORMATION**

|   |   |
|---|---|
| <b>Target</b>                           | CCR6  |
| <b>Synonyms</b>                         | CC-CKR-6;CKR-L3;DRY6;GPRCY4;CD196   |
| <b>Description</b>                      | Recombinant human CCR6 protein with C-terminal mouse Fc tag   |
| <b>Delivery</b>                         | In Stock  |
| <b>Uniprot ID</b>                       | P51684  |
| <b>Expression Host</b>                  | HEK293  |
| <b>Tag</b>                              | C-Mouse Fc Tag  |
| <b>Molecular Characterization</b>       | CCR6(Met1-Leu47) mFc(Pro99-Lys330)  |
| <b>Molecular Weight</b>                 | The protein has a predicted molecular mass of 31.7 kDa after removal of the signal peptide. The apparent molecular mass of CCR6-mFc is approximately 35-55 kDa due to glycosylation.  |
| <b>Purity</b>                           | The purity of the protein is greater than 95% as determined by SDS-PAGE and Coomassie blue staining.  |
| <b>Formulation &amp; Reconstitution</b> | Lyophilized from sterile PBS, pH 7.4. Normally 5% - 8% trehalose is added as protectants before lyophilization. Please see Certificate of Analysis for specific instructions of reconstitution.   |
| <b>Storage &amp; Shipping</b>           | Store at -20°C to -80°C for 12 months in lyophilized form. After reconstitution, if not intended for use within a month, aliquot and store at -80°C (Avoid repeated freezing and thawing). Lyophilized proteins are shipped at ambient temperature.   |
| <b>Background</b>                       | This gene encodes a member of the beta chemokine receptor family, which is predicted to be a seven transmembrane protein similar to G protein-coupled receptors. The gene is preferentially expressed by immature dendritic cells and memory T cells. The ligand of this receptor is macrophage inflammatory protein 3 alpha (MIP-3 alpha). This receptor has been shown to be important for B-lineage maturation and antigen-driven B-cell differentiation, and it may regulate the migration and recruitment of dendritic and T cells during inflammatory and immunological responses. Alternatively spliced transcript variants that encode the same protein have been described for this gene. [provided by RefSeq, Jul 2008] |
| <b>Usage</b>                            | Research use only   |
| <b>Conjugate</b>                        | Unconjugated  |



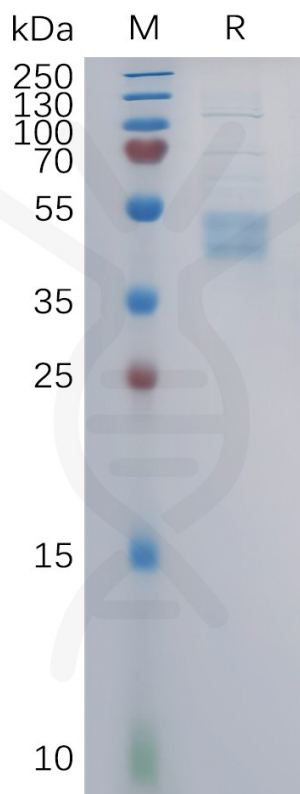


Figure 1. Human CCR6 Protein, mFc Tag on SDS-PAGE under reducing condition.

DIMABIO CONFIDENTIAL

