

PRODUCT INFORMATION

Target	CCL20
Synonyms	CKb4;Exodus;LARC;MIP-3-alpha;MIP-3a;MIP3A;SCYA20;ST38
Description	Recombinant Human CCL20 Protein with C-terminal human Fc tag
Delivery	In Stock
Uniprot ID	P78556
Expression Host	HEK293
Tag	C-Human Fc Tag
Molecular Characterization	CCL20(Ala27-Met96) hFc(Glu99-Ala330)
Molecular Weight	The protein has a predicted molecular mass of 34.3 kDa after removal of the signal peptide. The apparent molecular mass of CCL20-hFc is approximately 35-55 kDa due to glycosylation.
Purity	The purity of the protein is greater than 95% as determined by SDS-PAGE and Coomassie blue staining.
Formulation & Reconstitution	Lyophilized from sterile PBS, pH 7.4. Normally 5% - 8% trehalose is added as protectants before lyophilization. Please see Certificate of Analysis for specific instructions of reconstitution.
Storage & Shipping	Store at -20°C to -80°C for 12 months in lyophilized form. After reconstitution, if not intended for use within a month, aliquot and store at -80°C (Avoid repeated freezing and thawing). Lyophilized proteins are shipped at ambient temperature.
Background	This antimicrobial gene belongs to the subfamily of small cytokine CC genes. Cytokines are a family of secreted proteins involved in immunoregulatory and inflammatory processes. The CC cytokines are proteins characterized by two adjacent cysteines. The protein encoded by this gene displays chemotactic activity for lymphocytes and can repress proliferation of myeloid progenitors. Two transcript variants encoding different isoforms have been found for this gene.
Usage	Research use only
Conjugate	Unconjugated



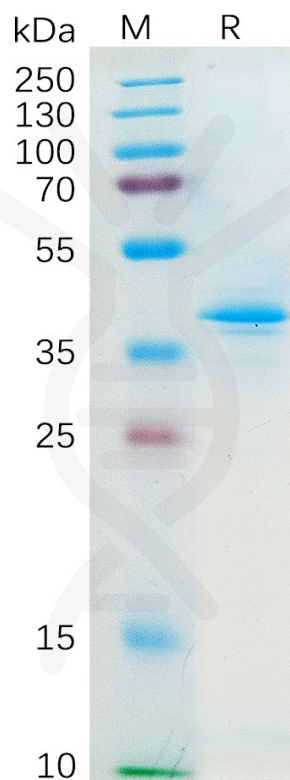


Figure 1. Human CCL20 Protein, hFc Tag on SDS-PAGE under reducing condition.

DIMABIO CONFIDENTIAL

