

**PRODUCT INFORMATION**

<b>Target</b>	C6
<b>Synonyms</b>	C6
<b>Description</b>	Recombinant human C6 Protein with C-terminal 6×His tag
<b>Delivery</b>	In Stock
<b>Uniprot ID</b>	P13671
<b>Expression Host</b>	HEK293
<b>Tag</b>	C-6×His tag
<b>Molecular Characterization</b>	C6(Cys22-Ala934) 6×His tag
<b>Molecular Weight</b>	The protein has a predicted molecular mass of 103.2 kDa after removal of the signal peptide. The apparent molecular mass of C6-His is approximately 100-130 kDa due to glycosylation.
<b>Purity</b>	The purity of the protein is greater than 85% as determined by SDS-PAGE and Coomassie blue staining.
<b>Formulation &amp; Reconstitution</b>	Lyophilized from sterile PBS, pH 7.4. Normally 5 % - 8% trehalose is added as protectants before lyophilization. Please see Certificate of Analysis for specific instructions of reconstitution.
<b>Storage &amp; Shipping</b>	Store at -20°C to -80°C for 12 months in lyophilized form. After reconstitution, if not intended for use within a month, aliquot and store at -80°C (Avoid repeated freezing and thawing). Lyophilized proteins are shipped at ambient temperature.
<b>Background</b>	This gene encodes a component of the complement cascade. The encoded protein is part of the membrane attack complex that can be incorporated into the cell membrane and cause cell lysis. Mutations in this gene are associated with complement component-6 deficiency. Transcript variants encoding the same protein have been described.[provided by RefSeq, Nov 2012]
<b>Usage</b>	Research use only
<b>Conjugate</b>	Unconjugated



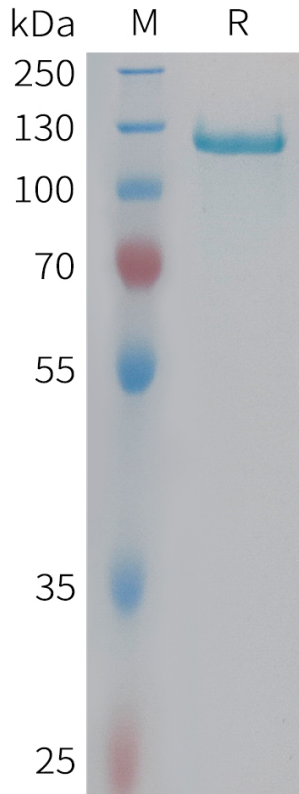


Figure 1. Human C6 Protein, His Tag on SDS-PAGE under reducing condition.

DIMABIO CONFIDENTIAL

