

PRODUCT INFORMATION

| | |
|---|---|
| Target | B7-2 |
| Synonyms | CD86;B7-2;B70;CD28LG2;LAB72;MGC34413 |
| Description | Recombinant human B7-2 protein with C-terminal human Fc tag |
| Delivery | In Stock |
| Uniprot ID | P42081 |
| Expression Host | HEK293 |
| Tag | C-Human Fc Tag |
| Molecular Characterization | B7-2(Leu26-Pro247) hFc(Glu99-Ala330) |
| Molecular Weight | The protein has a predicted molecular mass of 51.5 kDa after removal of the signal peptide. |
| Purity | The purity of the protein is greater than 95% as determined by SDS-PAGE and Coomassie blue staining. |
| Formulation & Reconstitution | Lyophilized from sterile PBS, pH 7.4. Normally 5% - 8% trehalose is added as protectants before lyophilization. Please see Certificate of Analysis for specific instructions of reconstitution. |
| Storage & Shipping | Store at -20°C to -80°C for 12 months in lyophilized form. After reconstitution, if not intended for use within a month, aliquot and store at -80°C (Avoid repeated freezing and thawing). Lyophilized proteins are shipped at ambient temperature. |
| Background | This gene encodes a type I membrane protein that is a member of the immunoglobulin superfamily. This protein is expressed by antigen-presenting cells, and it is the ligand for two proteins at the cell surface of T cells, CD28 antigen and cytotoxic T-lymphocyte-associated protein 4. Binding of this protein with CD28 antigen is a costimulatory signal for activation of the T-cell. Binding of this protein with cytotoxic T-lymphocyte-associated protein 4 negatively regulates T-cell activation and diminishes the immune response. Alternative splicing results in several transcript variants encoding different isoforms. |
| Usage | Research use only |
| Conjugate | Unconjugated |



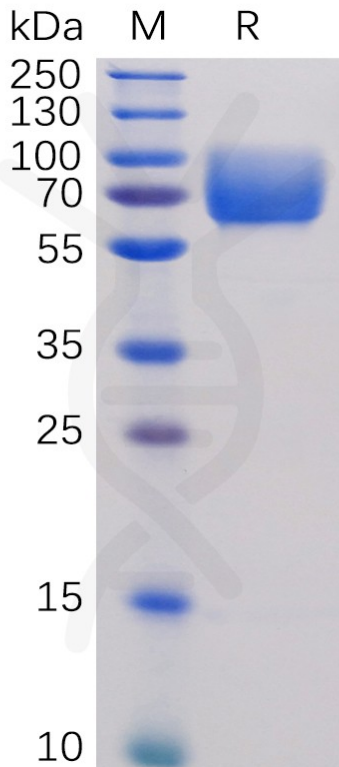


Figure 1. Human B7-2 Protein, hFc Tag on SDS-PAGE under reducing condition.

Human B7-2, hFc Tagged protein ELISA

0.2 μ g of Human B7-2, hFc Tagged protein per well

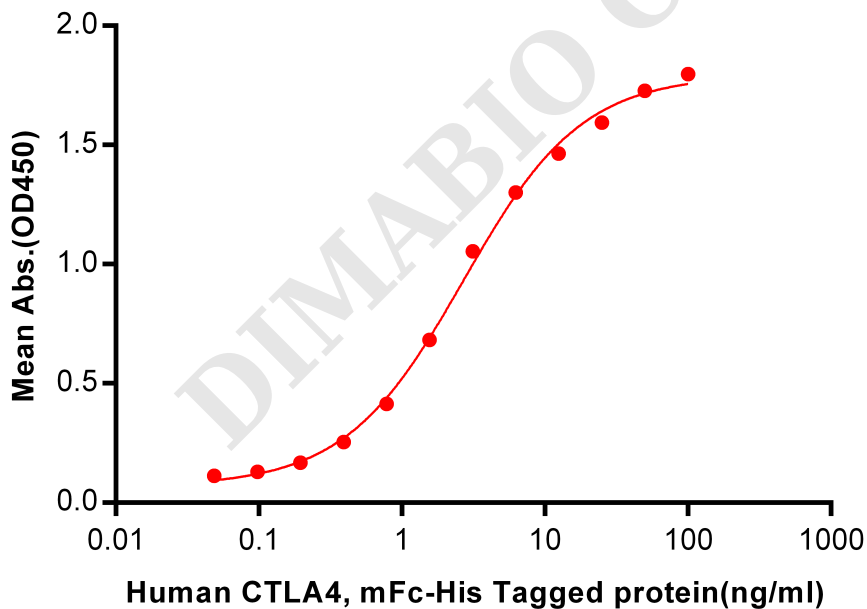


Figure 2. ELISA plate pre-coated by 2 μ g/ml (100 μ l/well) Human B7-2, hFc tagged protein (PME100474) can bind Human CTLA4, mFc-His tagged protein PME100017 in a linear range of 0.048-2.694 ng/ml.



Human B7-2, hFc Tagged protein ELISA

0.2 μg of B7-2, hFc Tagged protein per well

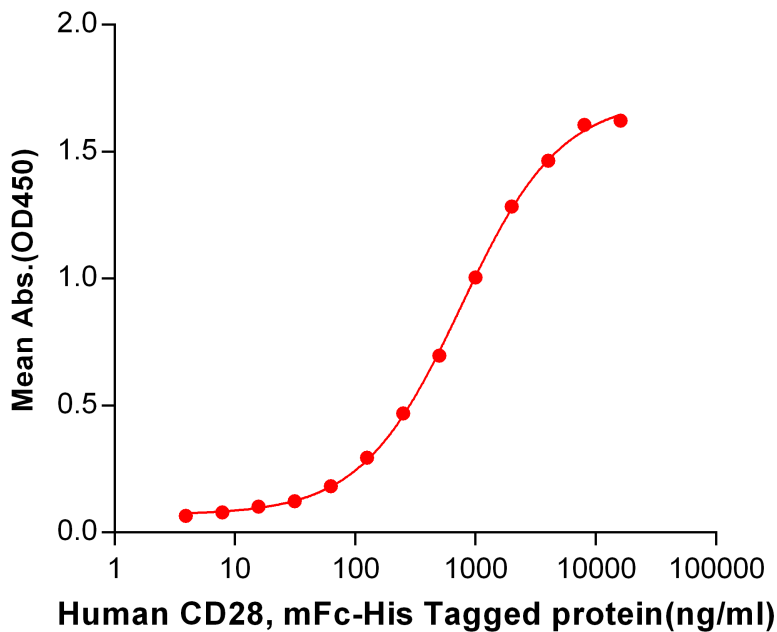


Figure 3. ELISA plate pre-coated by 2 $\mu\text{g}/\text{ml}$ (100 $\mu\text{l}/\text{well}$) Human B7-2, hFc tagged protein (PME100474) can bind Human CD28, mFc-His tagged protein PME100014 in a linear range of 62.5-4000 ng/ml.

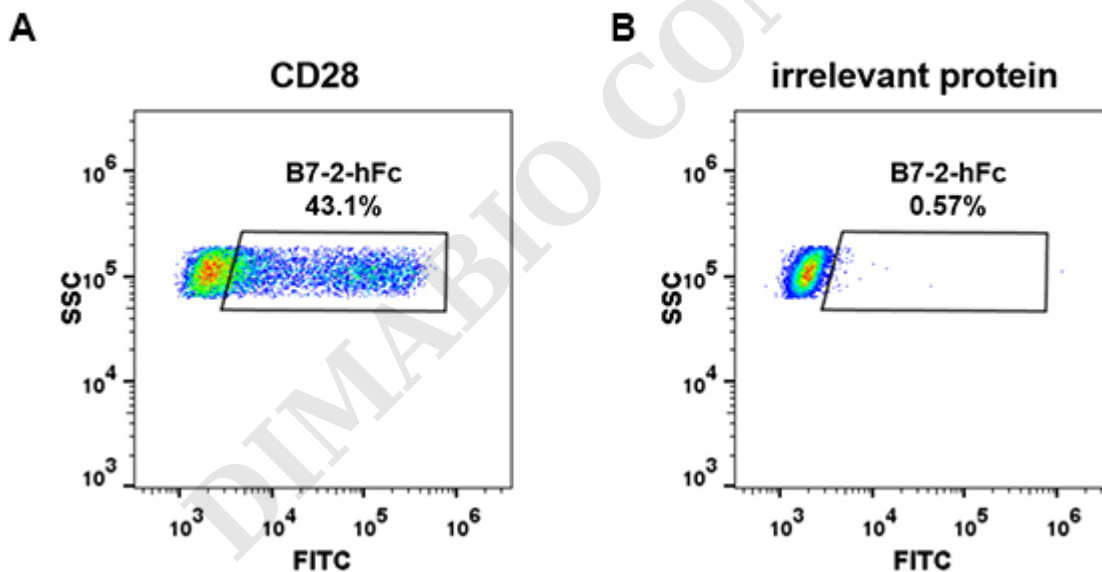


Figure 4. HEK293 cell line transfected with irrelevant protein (B) and human CD28 (A) were surface stained with Human B7-2, hFc tagged protein (PME100474) 1 $\mu\text{g}/\text{ml}$ followed by Alexa 488-conjugated anti-human IgG secondary antibody.

