

PRODUCT INFORMATION

Target	B7-1
Synonyms	CD80;B7;B7-1;B7.1;BB1;CD28LG;CD28LG1;LAB7
Description	Recombinant Human B7-1 Protein with C-terminal Mouse Fc and 6×His tag
Delivery	In Stock
Uniprot ID	P33681
Expression Host	HEK293
Tag	C-Mouse Fc and 6×His Tag
Molecular Characterization	B7-1(Val35-Asn242) mFc(Pro99-Lys330) 6×His tag
Molecular Weight	The protein has a predicted molecular mass of 50.9 kDa after removal of the signal peptide. The apparent molecular mass of B7-1-mFc-His is approximately 70-130 kDa due to glycosylation.
Purity	The purity of the protein is greater than 95% as determined by SDS-PAGE and Coomassie blue staining.
Formulation & Reconstitution	Lyophilized from sterile PBS, pH 7.4. Normally 5 % - 8% trehalose is added as protectants before lyophilization. Please see Certificate of Analysis for specific instructions of reconstitution.
Storage & Shipping	Store at -20°C to -80°C for 12 months in lyophilized form. After reconstitution, if not intended for use within a month, aliquot and store at -80°C (Avoid repeated freezing and thawing). Lyophilized proteins are shipped at ambient temperature.
Background	The protein encoded by this gene is a membrane receptor that is activated by the binding of CD28 or CTLA-4. The activated protein induces T-cell proliferation and cytokine production. This protein can act as a receptor for adenovirus subgroup B and may play a role in lupus neuropathy.
Usage	Research use only
Conjugate	Unconjugated



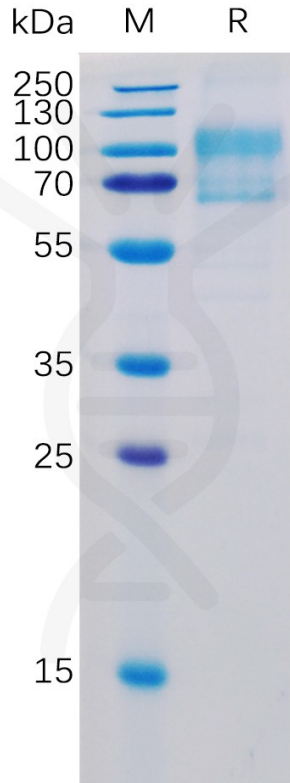


Figure 1. Human B7-1 Protein, mFc-His Tag on SDS-PAGE under reducing condition.

Human B7-1, mFc-His tagged protein ELISA

0.1 µg of Human B7-1, mFc-His tagged protein per well

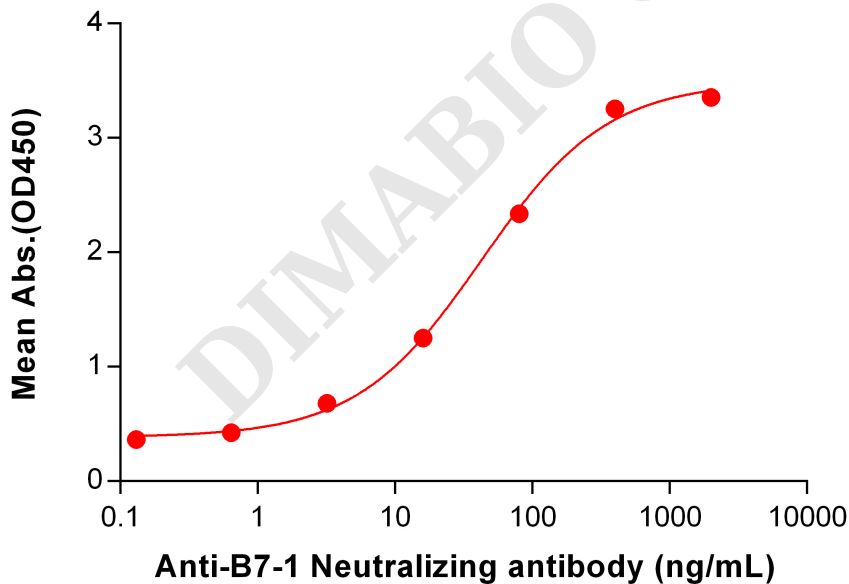


Figure 2. ELISA plate pre-coated by 1 µg/ml (100 µl/well) Human B7-1, mFc-His tagged protein (PME100047) can bind anti-B7-1 monoclonal antibody, Rabbit mAb clone: DM111 in a linear range of 0.13-80 ng/ml.



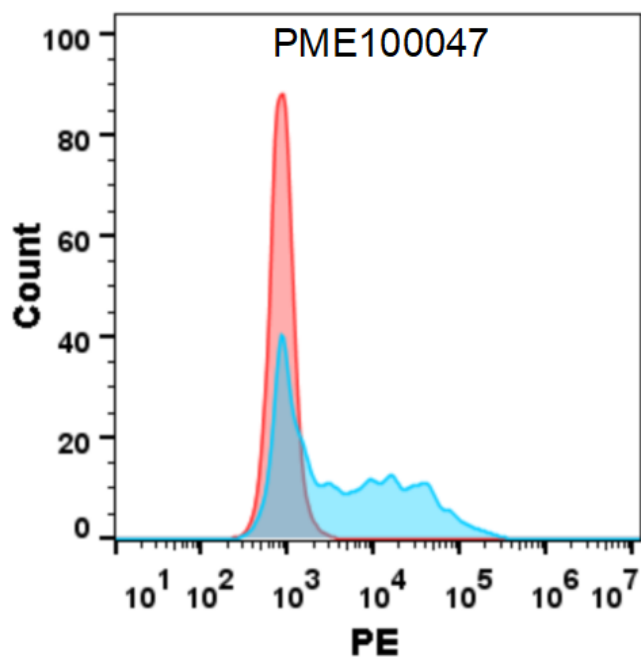


Figure 3. Flow cytometry analysis with 15 µg/mL Human B7-1 Protein, mFc-His tag (PME100047) on Expi293 cells transfected with human CD28 (Blue histogram) or Expi293 transfected with irrelevant protein (Red histogram).

DIMABIO CONFIDENTIAL

