

PRODUCT INFORMATION

Target	AXL
Synonyms	AXL;UFO
Description	Recombinant human AXL protein with C-terminal 6×His tag
Delivery	In Stock
Uniprot ID	P30530
Expression Host	HEK293
Tag	C-6×His Tag
Molecular Characterization	AXL(Ala26-Pro449) 6×His tag
Molecular Weight	The protein has a predicted molecular mass of 46.6 kDa after removal of the signal peptide.
Purity	The purity of the protein is greater than 95% as determined by SDS-PAGE and Coomassie blue staining.
Formulation & Reconstitution	Lyophilized from sterile PBS, pH 7.4. Normally 5 % - 8% trehalose is added as protectants before lyophilization. Please see Certificate of Analysis for specific instructions of reconstitution.
Storage & Shipping	Store at -20°C to -80°C for 12 months in lyophilized form. After reconstitution, if not intended for use within a month, aliquot and store at -80°C (Avoid repeated freezing and thawing). Lyophilized proteins are shipped at ambient temperature.
Background	The protein encoded by this gene is a member of the Tyro3-Axl-Mer (TAM) receptor tyrosine kinase subfamily. The encoded protein possesses an extracellular domain which is composed of two immunoglobulin-like motifs at the N-terminal, followed by two fibronectin type-III motifs. It transduces signals from the extracellular matrix into the cytoplasm by binding to the vitamin K-dependent protein growth arrest-specific 6 (Gas6). This gene may be involved in several cellular functions including growth, migration, aggregation and anti-inflammation in multiple cell types. Alternative splicing results in multiple transcript variants of this gene.
Usage	Research use only



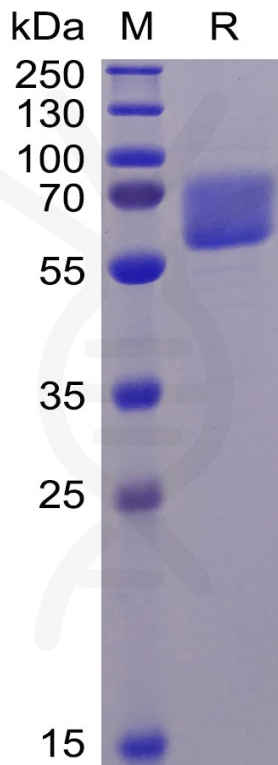


Figure 1. Human AXL Protein, His Tag on SDS-PAGE under reducing condition.

Human AXL, His Tagged protein ELISA

0.2 μ g of Human AXL, His tagged protein per well

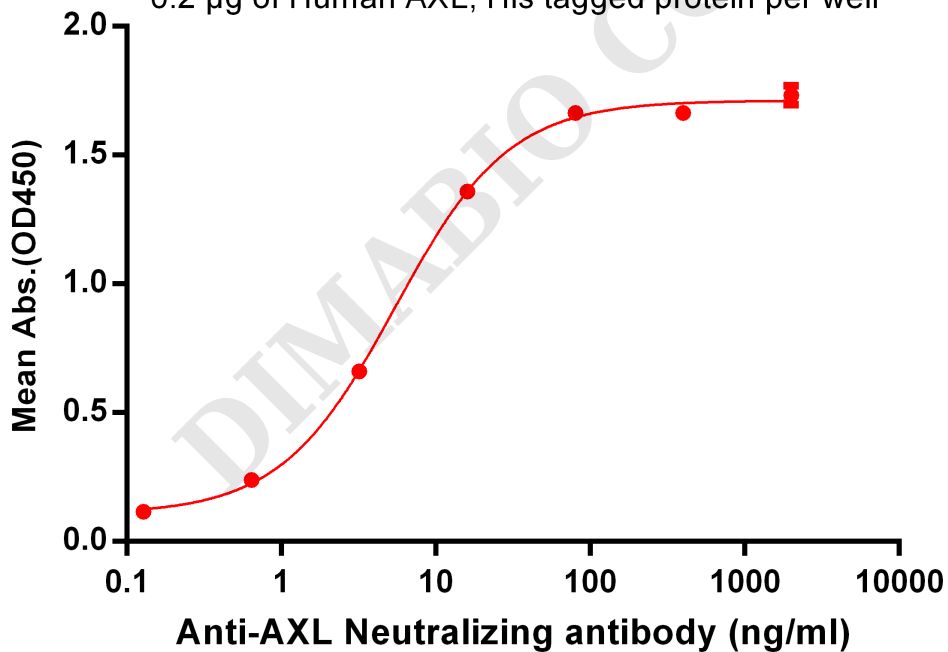


Figure 2. ELISA plate pre-coated by 2 μ g/ml (100 μ l/well) Human AXL, His tagged protein (PME100070) can bind Anti-AXL Antibody BME100033 in a linear range of 0.64-80.0 ng/ml.



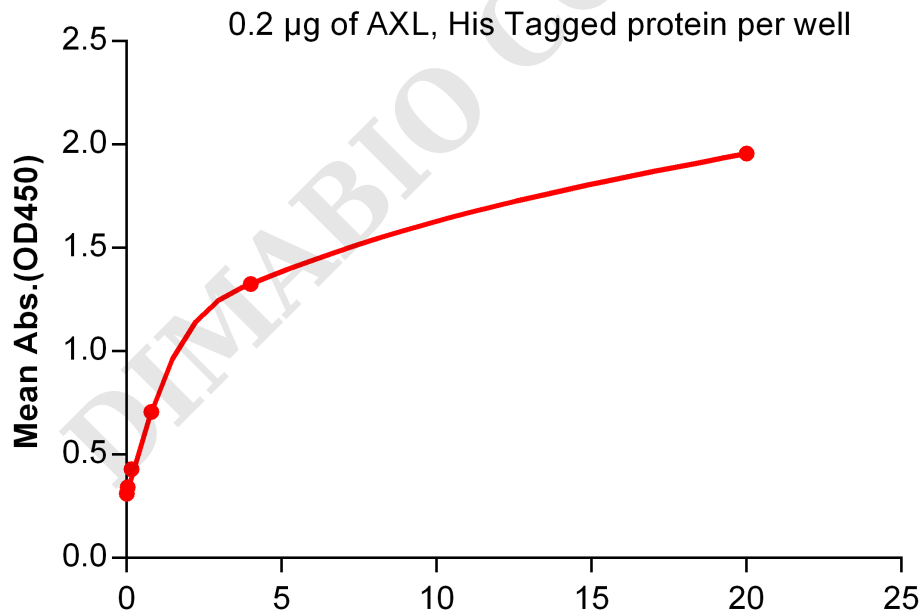
Human AXL, His Tagged protein ELISA



SARS-CoV-2 (2019-nCoV) S1 NTD, mFc Tagged protein(μ g/ml)

Figure 3. ELISA plate pre-coated by 2 μ g/ml (100 μ l/well) Human AXL, His tagged protein (PME100070) can bind Human NTD, mFc Tagged protein PME100492 in a linear range of 0.006-0.16 μ g/ml.

SARS-CoV-2 (2019-nCoV) S1 NTD, hFc Tagged protein ELISA



SARS-CoV-2 (2019-nCoV) S1 NTD, hFc Tagged protein(μ g/ml)

Figure 4. ELISA plate pre-coated by 2 μ g/ml (100 μ l/well) Human AXL, His tagged protein (PME100070) can bind Human NTD, hFc Tagged protein PME100493 in a linear range of 0.0012-0.16 μ g/ml.

