

**PRODUCT INFORMATION**

|   |   |
|---|---|
| <b>Target</b>                           | ANGPTL3   |
| <b>Synonyms</b>                         | ANG-5;ANGPT5;ANL3;FHBL2   |
| <b>Description</b>                      | Recombinant human ANGPTL3 protein with C-terminal 6×His tag   |
| <b>Delivery</b>                         | In Stock  |
| <b>Uniprot ID</b>                       | Q9Y5C1  |
| <b>Expression Host</b>                  | HEK293  |
| <b>Tag</b>                              | C-6×His Tag   |
| <b>Molecular Characterization</b>       | ANGPTL3(Ser17-Arg221) 6×His tag   |
| <b>Molecular Weight</b>                 | The protein has a predicted molecular mass of 24.8 kDa after removal of the signal peptide. The apparent molecular mass of ANGPTL3-His is approximately 25-35 kDa due to glycosylation.   |
| <b>Purity</b>                           | The purity of the protein is greater than 95% as determined by SDS-PAGE and Coomassie blue staining.  |
| <b>Formulation &amp; Reconstitution</b> | Lyophilized from sterile PBS, pH 7.4. Normally 5% - 8% trehalose is added as protectants before lyophilization. Please see Certificate of Analysis for specific instructions of reconstitution.   |
| <b>Storage &amp; Shipping</b>           | Store at -20°C to -80°C for 12 months in lyophilized form. After reconstitution, if not intended for use within a month, aliquot and store at -80°C (Avoid repeated freezing and thawing). Lyophilized proteins are shipped at ambient temperature.   |
| <b>Background</b>                       | This gene encodes a member of a family of secreted proteins that function in angiogenesis. The encoded protein, which is expressed predominantly in the liver, is further processed into an N-terminal coiled-coil domain-containing chain and a C-terminal fibrinogen chain. The N-terminal chain is important for lipid metabolism, while the C-terminal chain may be involved in angiogenesis. Mutations in this gene cause familial hypobetalipoproteinemia type 2. |
| <b>Usage</b>                            | Research use only   |



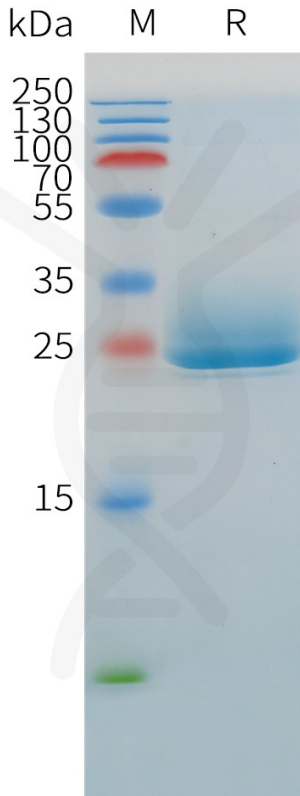


Figure 1. Human ANGPTL3 Protein, His Tag on SDS-PAGE under reducing condition.

### Human ANGPTL3, His Tagged protein ELISA

0.2 µg of Human ANGPTL3, His tagged protein per well

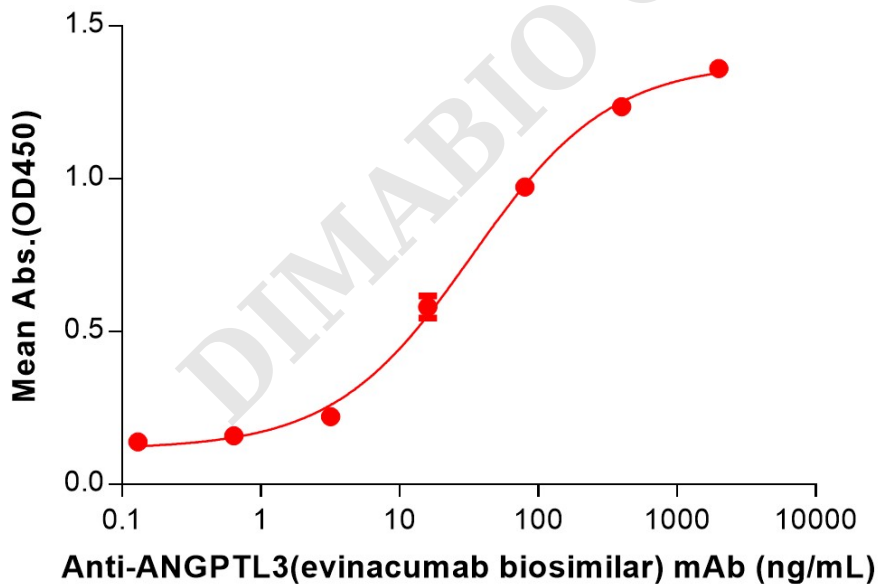


Figure 2. ELISA plate pre-coated by 2 µg/mL (100 µL/well) Human ANGPTL3 Protein, His Tag (PME100527) can bind Anti-ANGPTL3(evinacumab biosimilar) mAb (BME100203) in a linear range of 3.20-400 ng/mL.

